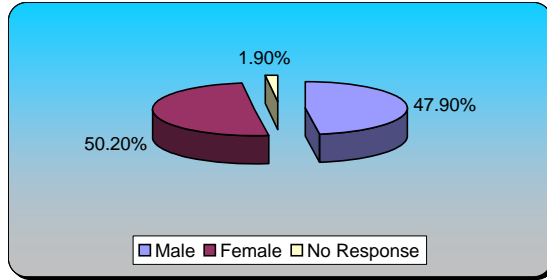


Turning Graphical Results by Question

Session Name: Merged_AllBudgetForums_FY11
 Created: 3/2/2010 11:47 AM

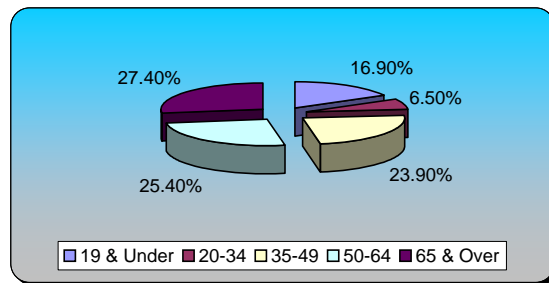
1.) Gender (multiple choice)

	Responses	
Male	101	47.87%
Female	106	50.24%
No Response	4	1.90%
Totals	211	100%



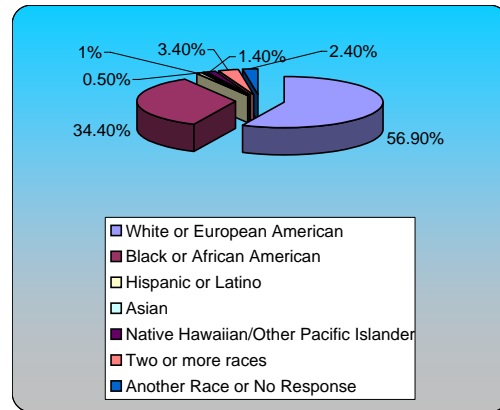
2.) Age (multiple choice)

	Responses	
19 & Under	34	16.92%
20-34	13	6.47%
35-49	48	23.88%
50-64	51	25.37%
65 & Over	55	27.36%
Totals	201	100%



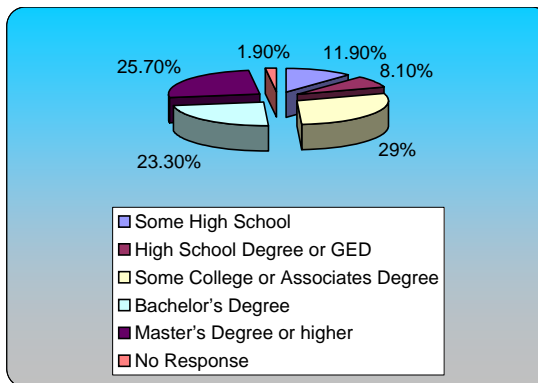
3.) Race (multiple choice)

	Responses	
White or European American	119	56.94%
Black or African American	72	34.45%
Hispanic or Latino	2	0.96%
Asian	1	0.48%
Native Hawaiian/Other Pacific Islander	3	1.44%
Two or more races	7	3.35%
Another Race or No Response	5	2.39%
Totals	209	100%



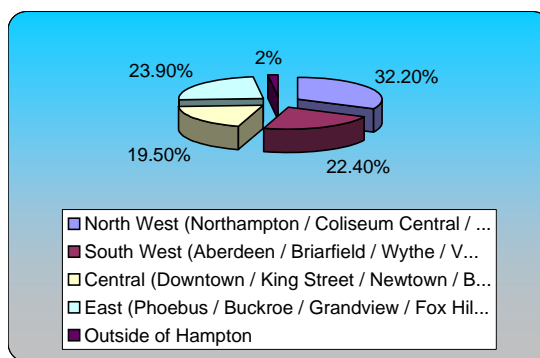
4.) Education Level (multiple choice)

	Responses	
Some High School	25	11.90%
High School Degree or GED	17	8.10%
Some College or Associates Degree	61	29.05%
Bachelor's Degree	49	23.33%
Master's Degree or higher	54	25.71%
No Response	4	1.90%
Totals	210	100%



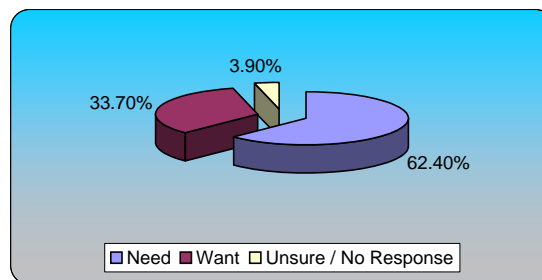
5.) Neighborhood Area (Where you Live, Work, Invest, or Visit most) (multiple choice)

	Responses	
North West (Northampton / Coliseum Central / ...	66	32.20%
South West (Aberdeen / Briarfield / Wythe / V...	46	22.44%
Central (Downtown / King Street / Newtown / B...	40	19.51%
East (Phoebus / Buckroe / Grandview / Fox Hil...	49	23.90%
Outside of Hampton	4	1.95%
Totals	205	100%



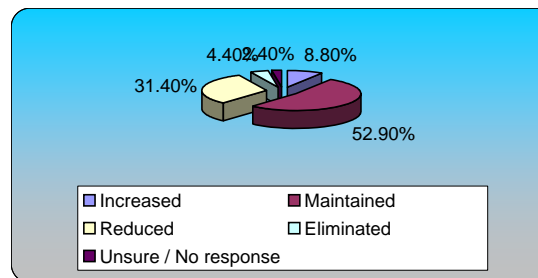
6.) Community & Neighborhood Centers (multiple choice)

	Responses	
Need	128	62.44%
Want	69	33.66%
Unsure / No Response	8	3.90%
Totals	205	100%



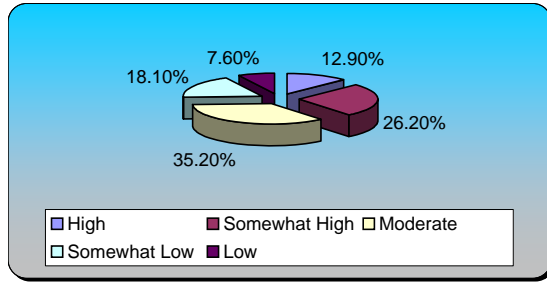
7.) Community & Neighborhood Centers (multiple choice)

	Responses	
Increased	18	8.82%
Maintained	108	52.94%
Reduced	64	31.37%
Eliminated	9	4.41%
Unsure / No response	5	2.45%
Totals	204	100%



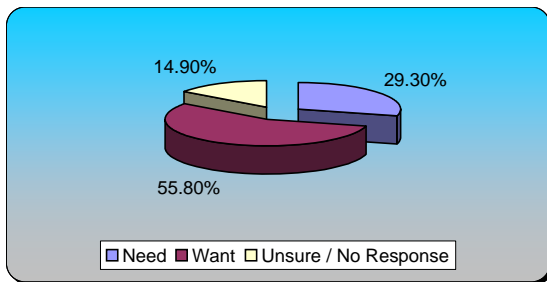
8.) Community & Neighborhood Centers (multiple choice)

	Responses	
High	27	12.86%
Somewhat High	55	26.19%
Moderate	74	35.24%
Somewhat Low	38	18.10%
Low	16	7.62%
Totals	210	100%



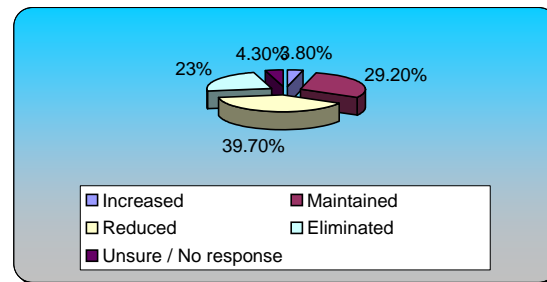
9.) Community Outreach on Diversity (multiple choice)

	Responses	
Need	63	29.30%
Want	120	55.81%
Unsure / No Response	32	14.88%
Totals	215	100%



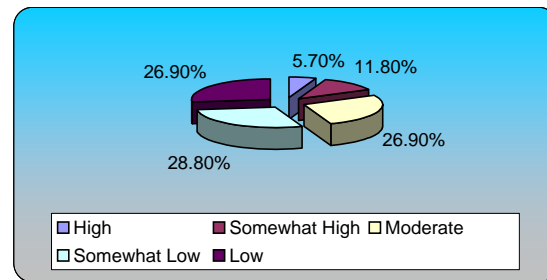
10.) Community Outreach on Diversity (multiple choice)

	Responses	
Increased	8	3.83%
Maintained	61	29.19%
Reduced	83	39.71%
Eliminated	48	22.97%
Unsure / No response	9	4.31%
Totals	209	100%

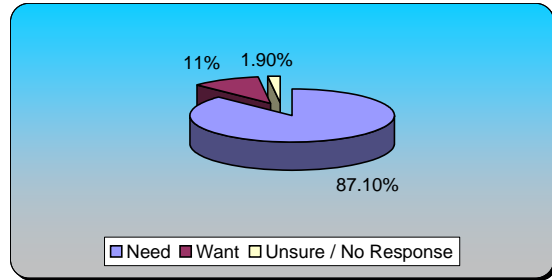


11.) Community Outreach on Diversity (multiple choice)

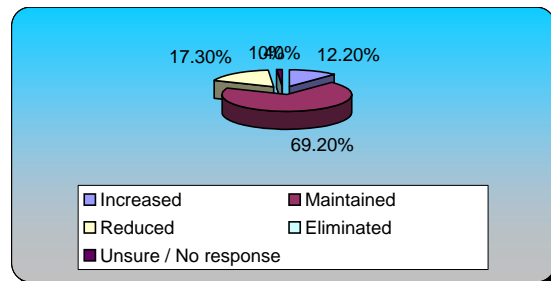
	Responses	
High	12	5.66%
Somewhat High	25	11.79%
Moderate	57	26.89%
Somewhat Low	61	28.77%
Low	57	26.89%
Totals	212	100%



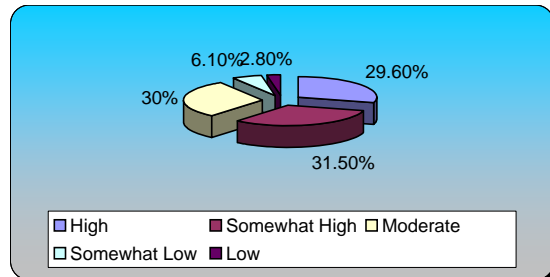
12.) Public Libraries (multiple choice)	Responses	
Need	182	87.08%
Want	23	11%
Unsure / No Response	4	1.91%
Totals	209	100%



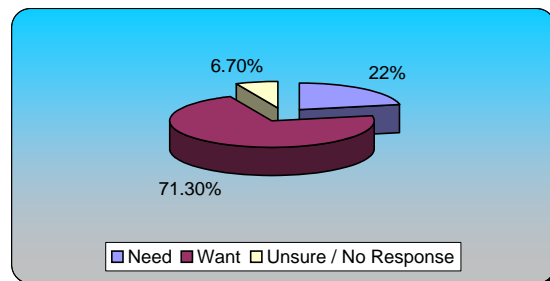
13.) Public Libraries (multiple choice)	Responses	
Increased	26	12.15%
Maintained	148	69.16%
Reduced	37	17.29%
Eliminated	0	0%
Unsure / No response	3	1.40%
Totals	214	100%



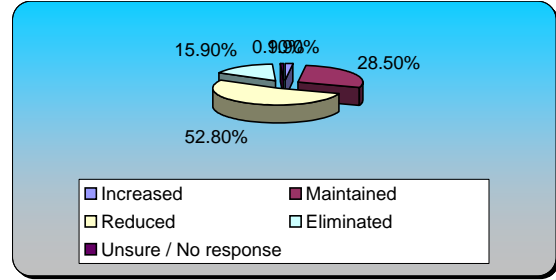
14.) Public Libraries (multiple choice)	Responses	
High	63	29.58%
Somewhat High	67	31.46%
Moderate	64	30.05%
Somewhat Low	13	6.10%
Low	6	2.82%
Totals	213	100%



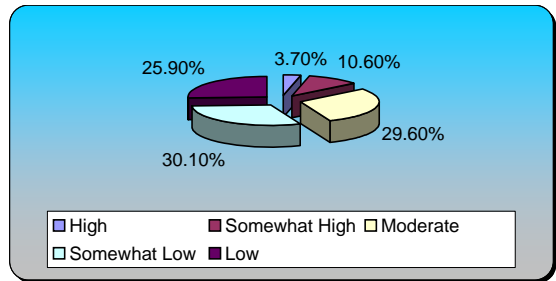
15.) Hampton History Museum (multiple choice)	Responses	
Need	46	22.01%
Want	149	71.29%
Unsure / No Response	14	6.70%
Totals	209	100%



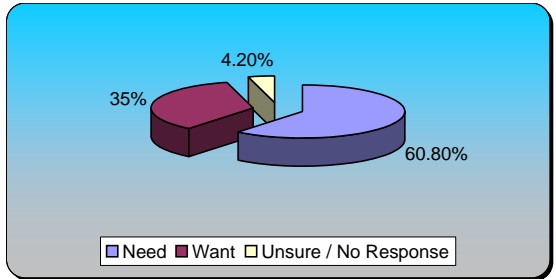
16.) Hampton History Museum (multiple choice)	Responses	
Increased	4	1.87%
Maintained	61	28.50%
Reduced	113	52.80%
Eliminated	34	15.89%
Unsure / No response	2	0.93%
Totals	214	100%



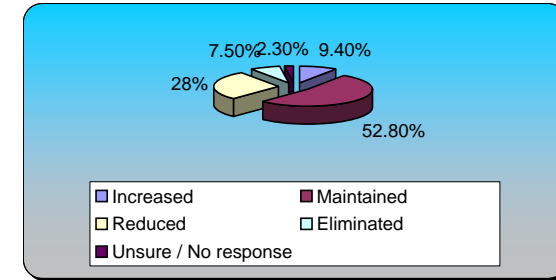
17.) Hampton History Museum (multiple choice)	Responses	
High	8	3.70%
Somewhat High	23	10.65%
Moderate	64	29.63%
Somewhat Low	65	30.09%
Low	56	25.93%
Totals	216	100%



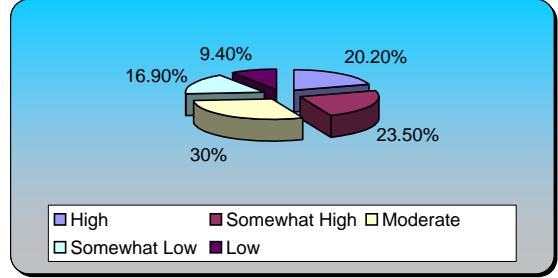
18.) Youth Sports Programs (multiple choice)	Responses	
Need	132	60.83%
Want	76	35.02%
Unsure / No Response	9	4.15%
Totals	217	100%



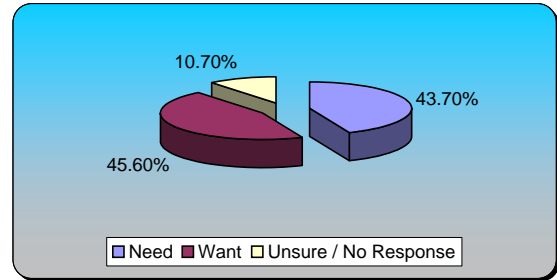
19.) Youth Sports Programs (multiple choice)	Responses	
Increased	20	9.35%
Maintained	113	52.80%
Reduced	60	28.04%
Eliminated	16	7.48%
Unsure / No response	5	2.34%
Totals	214	100%



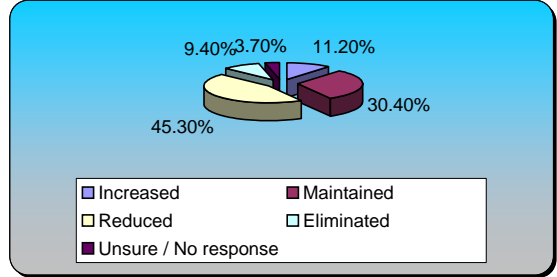
<u>20.) Youth Sports Programs (multiple choice)</u>	<u>Responses</u>	
High	43	20.19%
Somewhat High	50	23.47%
Moderate	64	30.05%
Somewhat Low	36	16.90%
Low	20	9.39%
Totals	213	100%



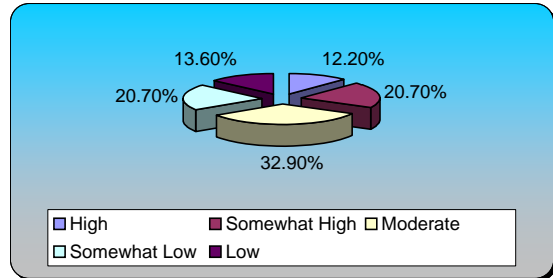
<u>21.) Master Plan Implementation (multiple choice)</u>	<u>Responses</u>	
Need	94	43.72%
Want	98	45.58%
Unsure / No Response	23	10.70%
Totals	215	100%



<u>22.) Master Plan Implementation (multiple choice)</u>	<u>Responses</u>	
Increased	24	11.21%
Maintained	65	30.37%
Reduced	97	45.33%
Eliminated	20	9.35%
Unsure / No response	8	3.74%
Totals	214	100%

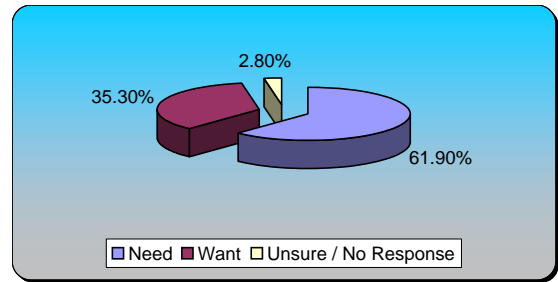


<u>23.) Master Plan Implementation (multiple choice)</u>	<u>Responses</u>	
High	26	12.21%
Somewhat High	44	20.66%
Moderate	70	32.86%
Somewhat Low	44	20.66%
Low	29	13.62%
Totals	213	100%



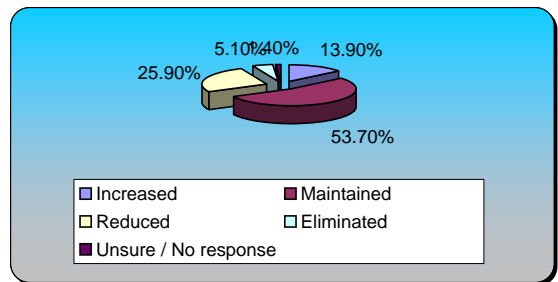
24.) Attract Tourists & Conventions (multiple choice) Responses

Need	135	61.93%
Want	77	35.32%
Unsure / No Response	6	2.75%
Totals	218	100%



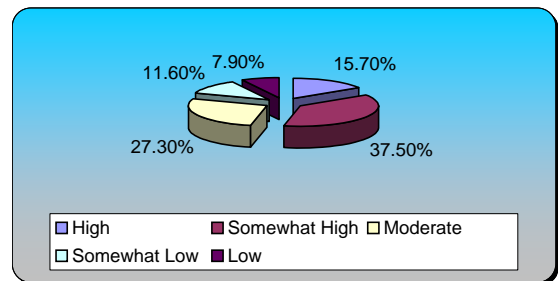
25.) Attract Tourists & Conventions (multiple choice) Responses

Increased	30	13.89%
Maintained	116	53.70%
Reduced	56	25.93%
Eliminated	11	5.09%
Unsure / No response	3	1.39%
Totals	216	100%



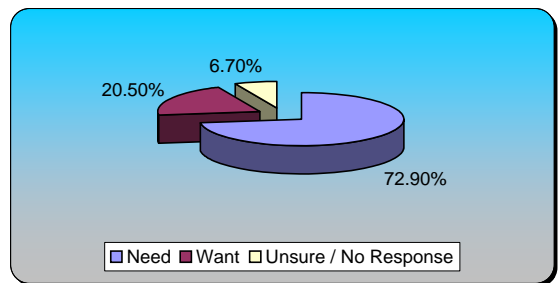
26.) Attract Tourists & Conventions (multiple choice) Responses

High	34	15.74%
Somewhat High	81	37.50%
Moderate	59	27.31%
Somewhat Low	25	11.57%
Low	17	7.87%
Totals	216	100%



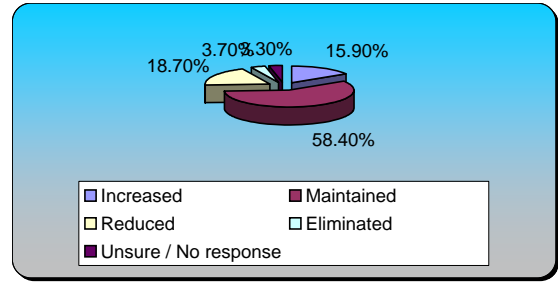
27.) Retain & Expand Existing Businesses (multiple choice)

	Responses	
Need	153	72.86%
Want	43	20.48%
Unsure / No Response	14	6.67%
Totals	210	100%



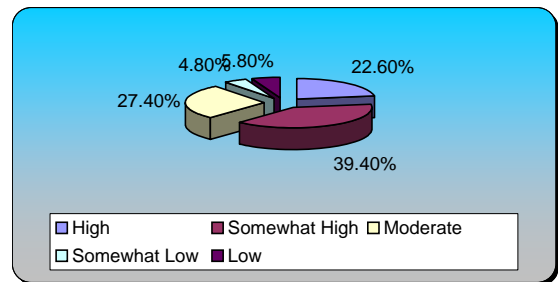
28.) Retain & Expand Existing Businesses (multiple choice)

	Responses	
Increased	34	15.89%
Maintained	125	58.41%
Reduced	40	18.69%
Eliminated	8	3.74%
Unsure / No response	7	3.27%
Totals	214	100%



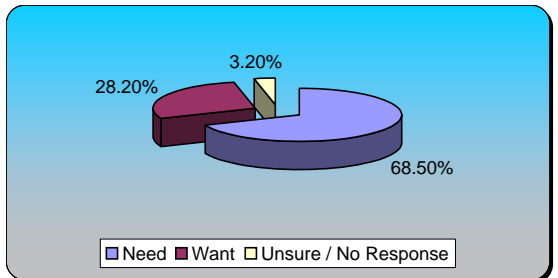
29.) Retain & Expand Existing Businesses (multiple choice)

	Responses	
High	47	22.60%
Somewhat High	82	39.42%
Moderate	57	27.40%
Somewhat Low	10	4.81%
Low	12	5.77%
Totals	208	100%



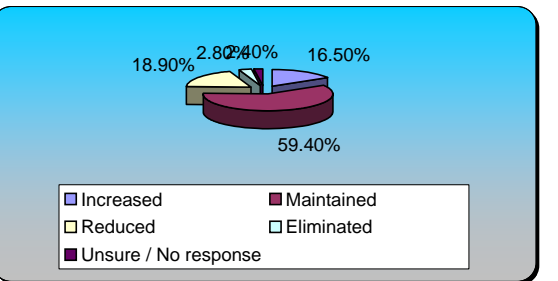
30.) Attract New Businesses (multiple choice)

	Responses	
Need	148	68.52%
Want	61	28.24%
Unsure / No Response	7	3.24%
Totals	216	100%

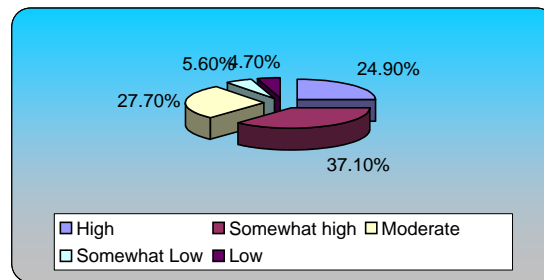


31.) Attract New Businesses (multiple choice)

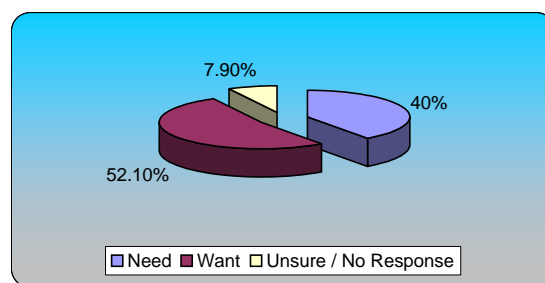
	Responses	
Increased	35	16.51%
Maintained	126	59.43%
Reduced	40	18.87%
Eliminated	6	2.83%
Unsure / No response	5	2.36%
Totals	212	100%



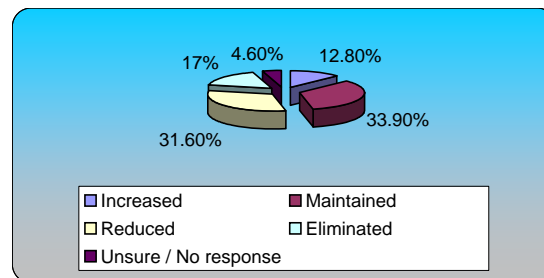
32.) Attract New Businesses (multiple choice)	Responses	
High	53	24.88%
Somewhat high	79	37.09%
Moderate	59	27.70%
Somewhat Low	12	5.63%
Low	10	4.69%
Totals	213	100%



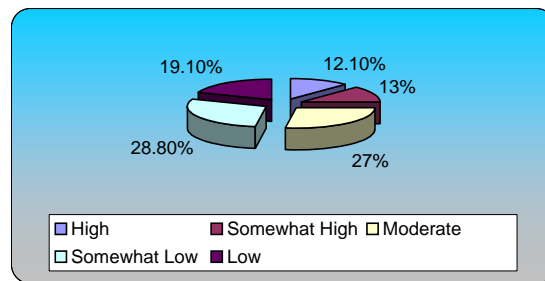
33.) Encourage Minority Businesses Development (multiple choice)	Responses	
Need	86	40%
Want	112	52.09%
Unsure / No Response	17	7.91%
Totals	215	100%



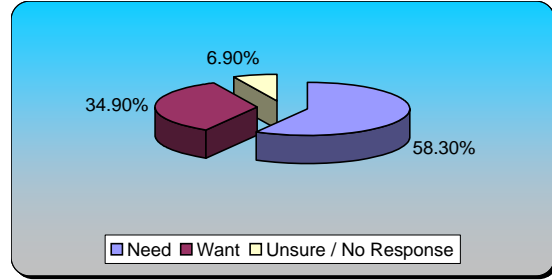
34.) Encourage Minority Businesses Development (multiple choice)	Responses	
Increased	28	12.84%
Maintained	74	33.94%
Reduced	69	31.65%
Eliminated	37	16.97%
Unsure / No response	10	4.59%
Totals	218	100%



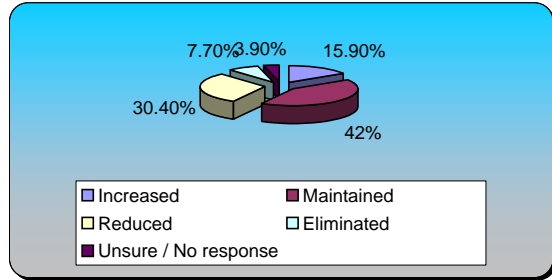
35.) Encourage Minority Businesses Development (multiple choice)	Responses	
High	26	12.09%
Somewhat High	28	13.02%
Moderate	58	26.98%
Somewhat Low	62	28.84%
Low	41	19.07%
Totals	215	100%



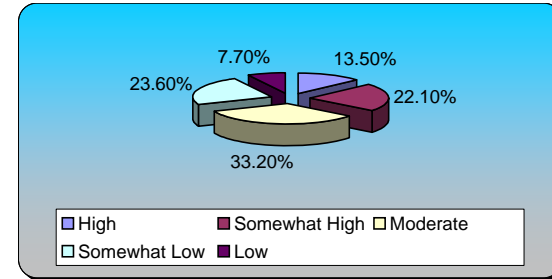
36.) Remove Blighted Property (multiple choice)	Responses	
Need	127	58.26%
Want	76	34.86%
Unsure / No Response	15	6.88%
Totals	218	100%



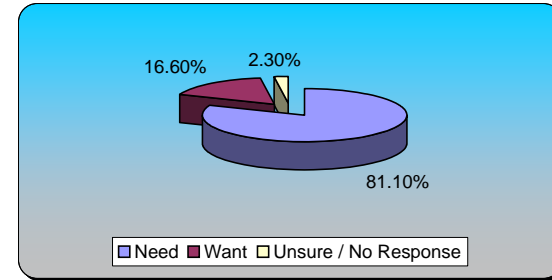
37.) Remove Blighted Property (multiple choice)	Responses	
Increased	33	15.94%
Maintained	87	42.03%
Reduced	63	30.43%
Eliminated	16	7.73%
Unsure / No response	8	3.86%
Totals	207	100%



38.) Remove Blighted Property (multiple choice)	Responses	
High	28	13.46%
Somewhat High	46	22.12%
Moderate	69	33.17%
Somewhat Low	49	23.56%
Low	16	7.69%
Totals	208	100%

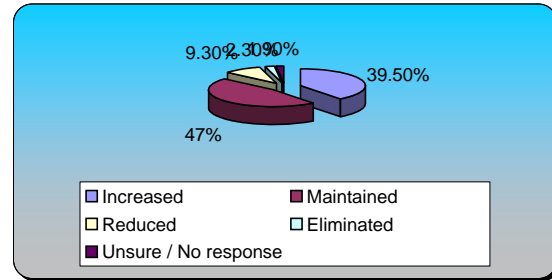


39.) Improve Drainage for Heavy Rains (multiple choice)	Responses	
Need	176	81.11%
Want	36	16.59%
Unsure / No Response	5	2.30%
Totals	217	100%



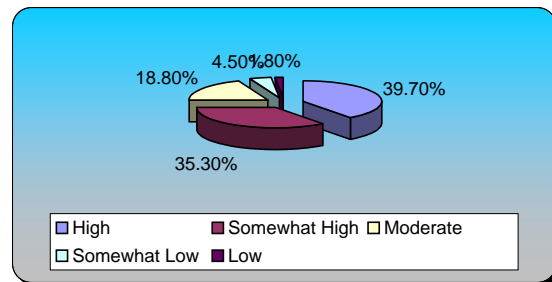
40.) Improve Drainage for Heavy Rains (multiple choice)

	Responses	
Increased	85	39.53%
Maintained	101	46.98%
Reduced	20	9.30%
Eliminated	5	2.33%
Unsure / No response	4	1.86%
Totals	215	100%



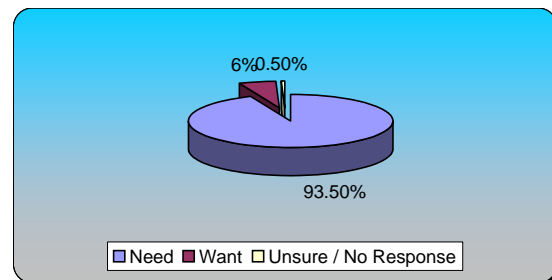
41.) Improve Drainage for Heavy Rains (multiple choice)

	Responses	
High	89	39.73%
Somewhat High	79	35.27%
Moderate	42	18.75%
Somewhat Low	10	4.46%
Low	4	1.79%
Totals	224	100%



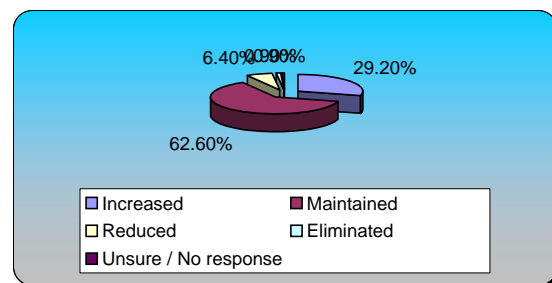
42.) Maintain Streets, Roads, & Bridges (multiple choice)

	Responses	
Need	201	93.49%
Want	13	6.05%
Unsure / No Response	1	0.47%
Totals	215	100%



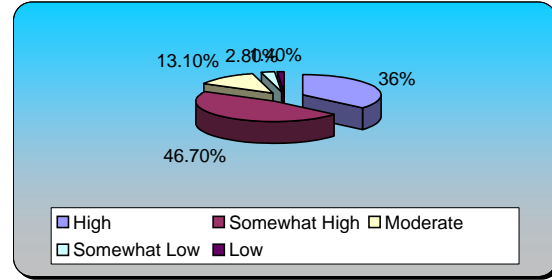
43.) Maintain Streets, Roads, & Bridges (multiple choice)

	Responses	
Increased	64	29.22%
Maintained	137	62.56%
Reduced	14	6.39%
Eliminated	2	0.91%
Unsure / No response	2	0.91%
Totals	219	100%



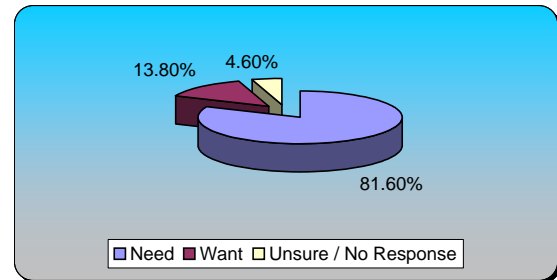
44.) Maintain Streets, Roads, & Bridges (multiple choice)

	Responses	
High	77	35.98%
Somewhat High	100	46.73%
Moderate	28	13.08%
Somewhat Low	6	2.80%
Low	3	1.40%
Totals	214	100%



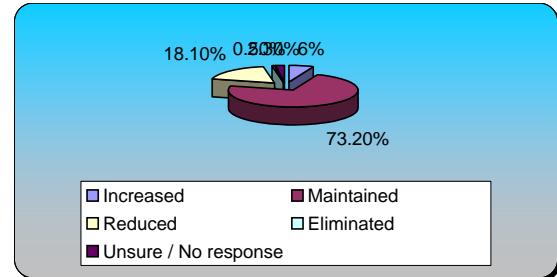
45.) Maintain Traffic Signals (multiple choice)

	Responses	
Need	178	81.65%
Want	30	13.76%
Unsure / No Response	10	4.59%
Totals	218	100%



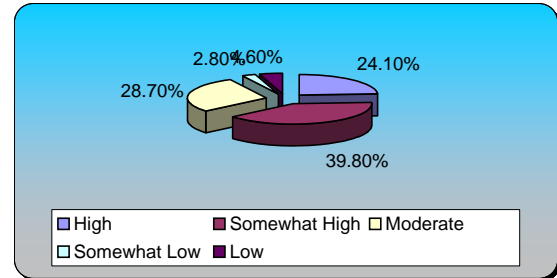
46.) Maintain Traffic Signals (multiple choice)

	Responses	
Increased	13	6.02%
Maintained	158	73.15%
Reduced	39	18.06%
Eliminated	1	0.46%
Unsure / No response	5	2.31%
Totals	216	100%

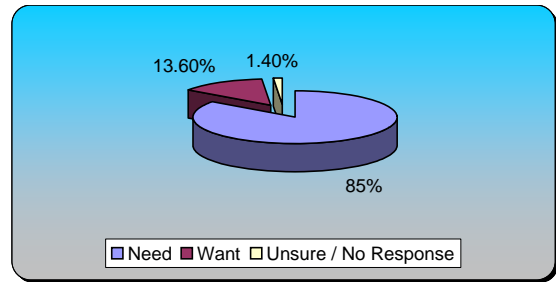


47.) Maintain Traffic Signals (multiple choice)

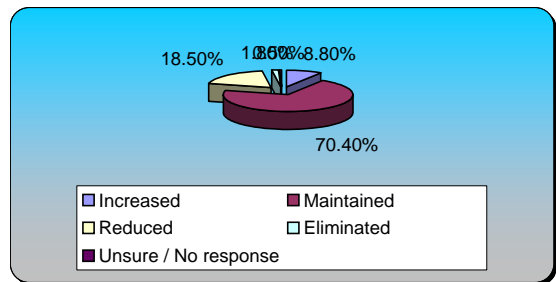
	Responses	
High	52	24.07%
Somewhat High	86	39.81%
Moderate	62	28.70%
Somewhat Low	6	2.78%
Low	10	4.63%
Totals	216	100%



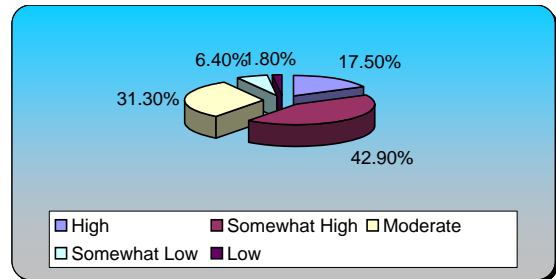
48.) Maintain City Street Lighting (multiple choice)	Responses	
Need	181	84.98%
Want	29	13.62%
Unsure / No Response	3	1.41%
Totals	213	100%



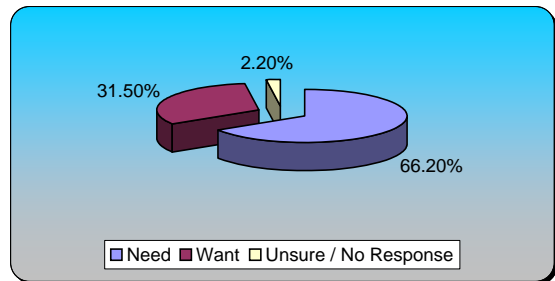
49.) Maintain City Street Lighting (multiple choice)	Responses	
Increased	19	8.80%
Maintained	152	70.37%
Reduced	40	18.52%
Eliminated	4	1.85%
Unsure / No response	1	0.46%
Totals	216	100%



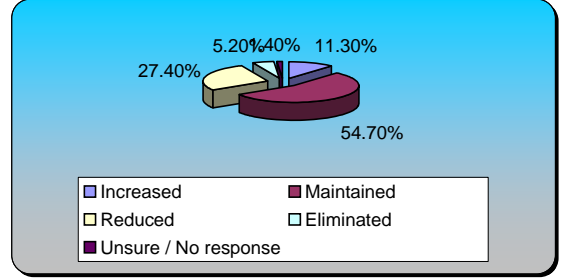
50.) Maintain City Street Lighting (multiple choice)	Responses	
High	38	17.51%
Somewhat High	93	42.86%
Moderate	68	31.34%
Somewhat Low	14	6.45%
Low	4	1.84%
Totals	217	100%



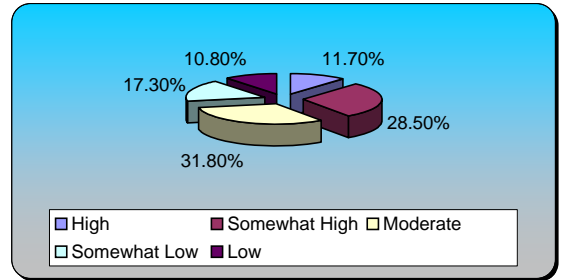
51.) Insect & Mosquito Control (multiple choice)	Responses	
Need	147	66.22%
Want	70	31.53%
Unsure / No Response	5	2.25%
Totals	222	100%



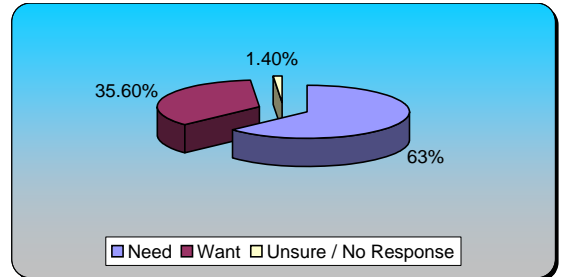
<u>52.) Insect & Mosquito Control (multiple choice)</u>	<u>Responses</u>	
Increased	24	11.32%
Maintained	116	54.72%
Reduced	58	27.36%
Eliminated	11	5.19%
Unsure / No response	3	1.42%
Totals	212	100%



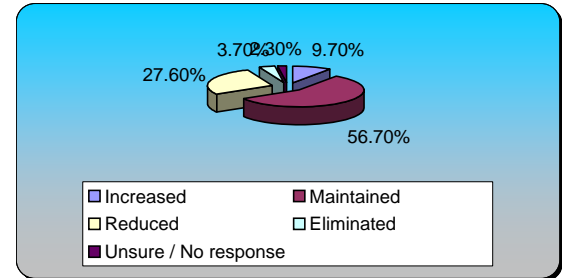
<u>53.) Insect & Mosquito Control (multiple choice)</u>	<u>Responses</u>	
High	25	11.68%
Somewhat High	61	28.50%
Moderate	68	31.78%
Somewhat Low	37	17.29%
Low	23	10.75%
Totals	214	100%



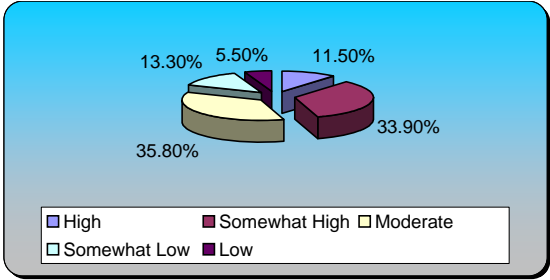
<u>54.) Maintain Parks & Playgrounds (multiple choice)</u>	<u>Responses</u>	
Need	138	63.01%
Want	78	35.62%
Unsure / No Response	3	1.37%
Totals	219	100%



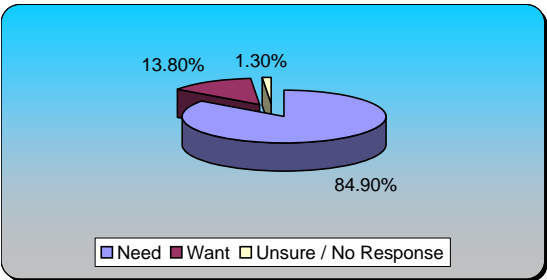
<u>55.) Maintain Parks & Playgrounds (multiple choice)</u>	<u>Responses</u>	
Increased	21	9.68%
Maintained	123	56.68%
Reduced	60	27.65%
Eliminated	8	3.69%
Unsure / No response	5	2.30%
Totals	217	100%



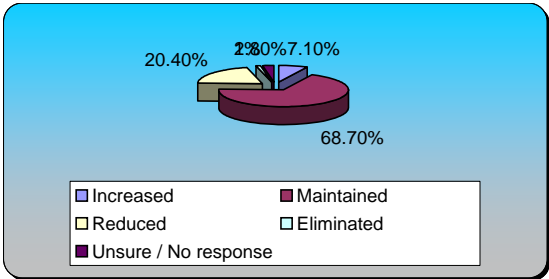
56.) Maintain Parks & Playgrounds (multiple choice)		Responses	
High	25	11.47%	
Somewhat High	74	33.94%	
Moderate	78	35.78%	
Somewhat Low	29	13.30%	
Low	12	5.50%	
Totals	218	100%	



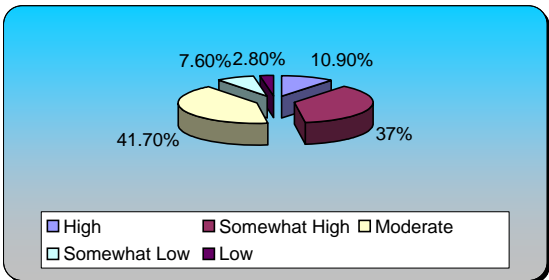
57.) Upkeep of Public Facilities (multiple choice)		Responses	
Need	191	84.89%	
Want	31	13.78%	
Unsure / No Response	3	1.33%	
Totals	225	100%	



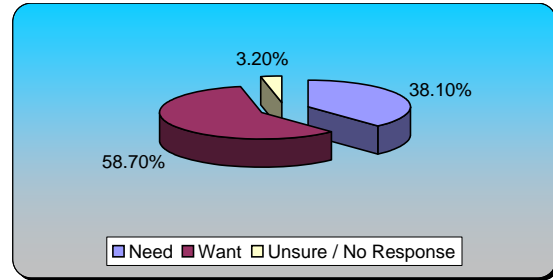
58.) Upkeep of Public Facilities (multiple choice)		Responses	
Increased	15	7.11%	
Maintained	145	68.72%	
Reduced	43	20.38%	
Eliminated	2	0.95%	
Unsure / No response	6	2.84%	
Totals	211	100%	



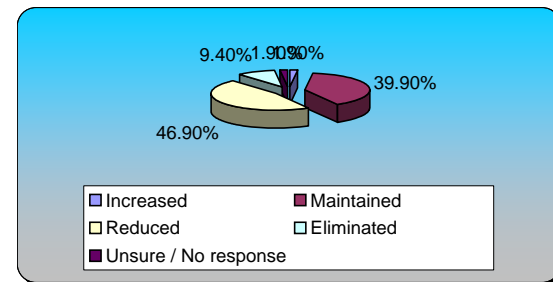
59.) Upkeep of Public Facilities (multiple choice)		Responses	
High	23	10.90%	
Somewhat High	78	36.97%	
Moderate	88	41.71%	
Somewhat Low	16	7.58%	
Low	6	2.84%	
Totals	211	100%	



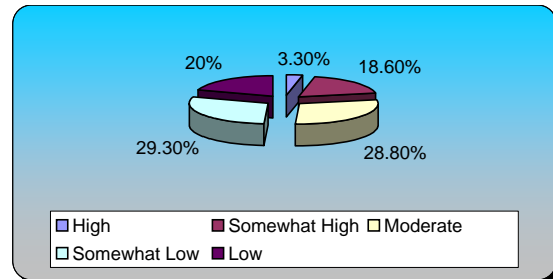
60.) Maintain Medians (multiple choice)	Responses	
Need	83	38.07%
Want	128	58.72%
Unsure / No Response	7	3.21%
Totals	218	100%



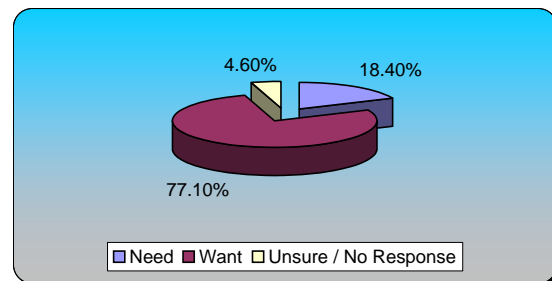
61.) Maintain Medians (multiple choice)	Responses	
Increased	4	1.88%
Maintained	85	39.91%
Reduced	100	46.95%
Eliminated	20	9.39%
Unsure / No response	4	1.88%
Totals	213	100%



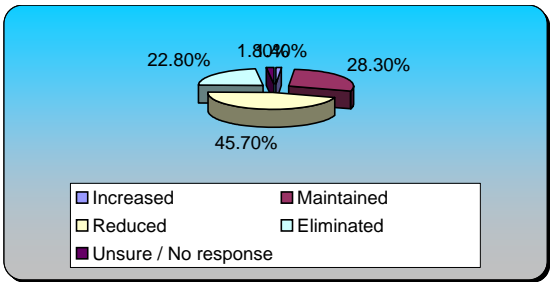
62.) Maintain Medians (multiple choice)	Responses	
High	7	3.26%
Somewhat High	40	18.60%
Moderate	62	28.84%
Somewhat Low	63	29.30%
Low	43	20%
Totals	215	100%



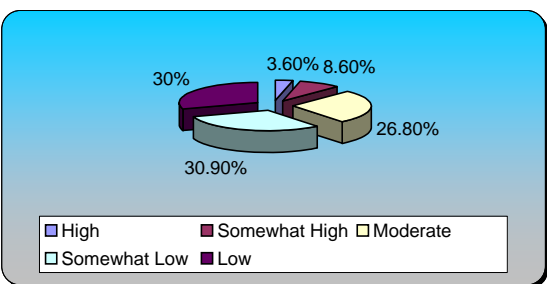
63.) Enhance Landscaping (multiple choice)	Responses	
Need	40	18.35%
Want	168	77.06%
Unsure / No Response	10	4.59%
Totals	218	100%



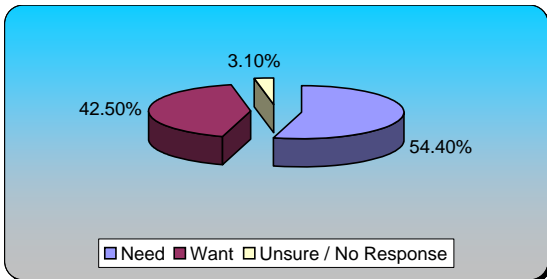
64.) Enhance Landscaping (multiple choice)	Responses	
Increased	3	1.37%
Maintained	62	28.31%
Reduced	100	45.66%
Eliminated	50	22.83%
Unsure / No response	4	1.83%
Totals	219	100%



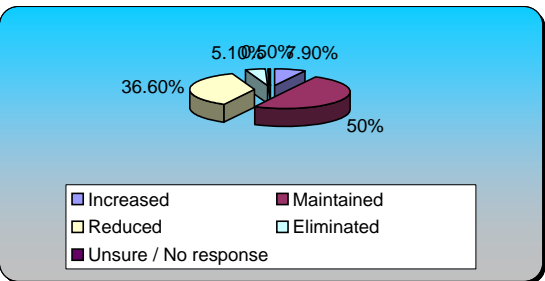
65.) Enhance Landscaping (multiple choice)	Responses	
High	8	3.64%
Somewhat High	19	8.64%
Moderate	59	26.82%
Somewhat Low	68	30.91%
Low	66	30%
Totals	220	100%



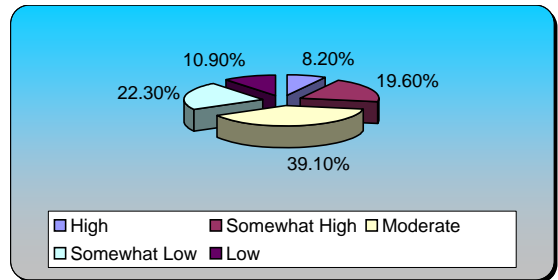
66.) Maintain Athletic Fields (multiple choice)	Responses	
Need	123	54.42%
Want	96	42.48%
Unsure / No Response	7	3.10%
Totals	226	100%



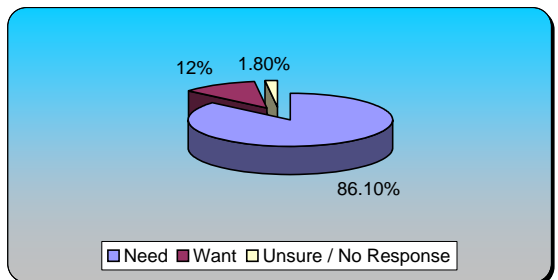
67.) Maintain Athletic Fields (multiple choice)	Responses	
Increased	17	7.87%
Maintained	108	50%
Reduced	79	36.57%
Eliminated	11	5.09%
Unsure / No response	1	0.46%
Totals	216	100%



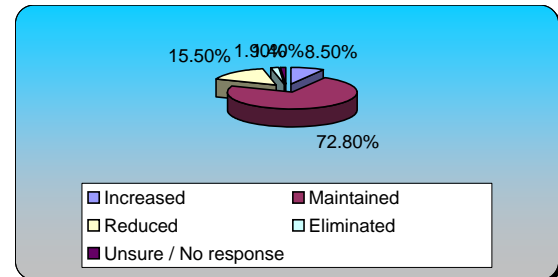
68.) Maintain Athletic Fields (multiple choice)	Responses	
High	18	8.18%
Somewhat High	43	19.55%
Moderate	86	39.09%
Somewhat Low	49	22.27%
Low	24	10.91%
Totals	220	100%



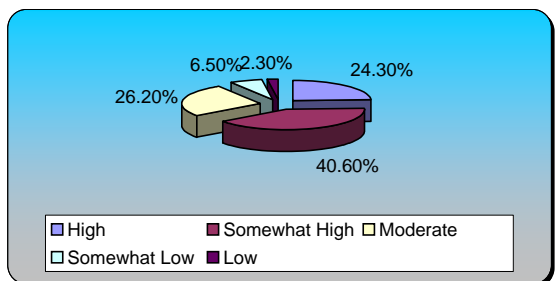
69.) Building Inspections (multiple choice)	Responses	
Need	186	86.11%
Want	26	12.04%
Unsure / No Response	4	1.85%
Totals	216	100%



70.) Building Inspections (multiple choice)	Responses	
Increased	18	8.45%
Maintained	155	72.77%
Reduced	33	15.49%
Eliminated	4	1.88%
Unsure / No response	3	1.41%
Totals	213	100%

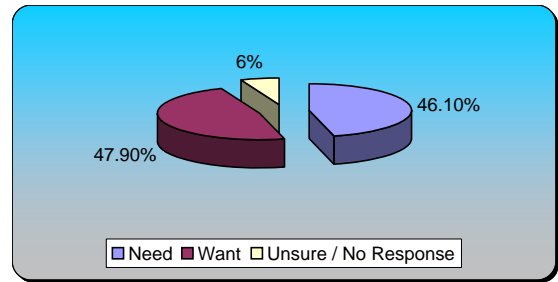


71.) Building Inspections (multiple choice)	Responses	
High	52	24.30%
Somewhat High	87	40.65%
Moderate	56	26.17%
Somewhat Low	14	6.54%
Low	5	2.34%
Totals	214	100%



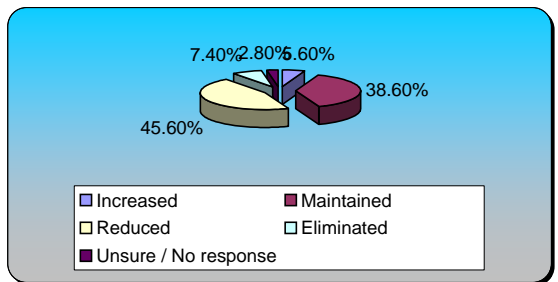
72.) Strategic Community Planning (multiple choice) Responses

Need	100	46.08%
Want	104	47.93%
Unsure / No Response	13	5.99%
Totals	217	100%



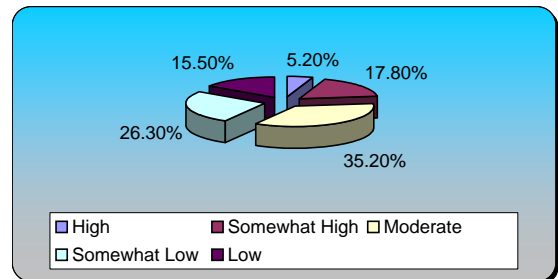
73.) Strategic Community Planning (multiple choice) Responses

Increased	12	5.58%
Maintained	83	38.60%
Reduced	98	45.58%
Eliminated	16	7.44%
Unsure / No response	6	2.79%
Totals	215	100%



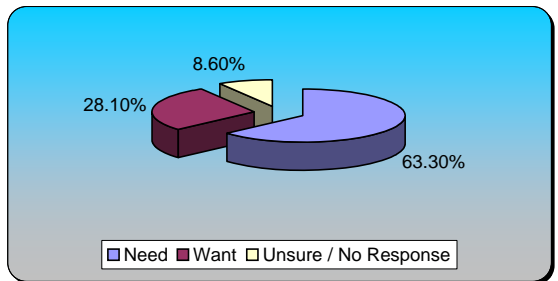
74.) Strategic Community Planning (multiple choice) Responses

High	11	5.16%
Somewhat High	38	17.84%
Moderate	75	35.21%
Somewhat Low	56	26.29%
Low	33	15.49%
Totals	213	100%

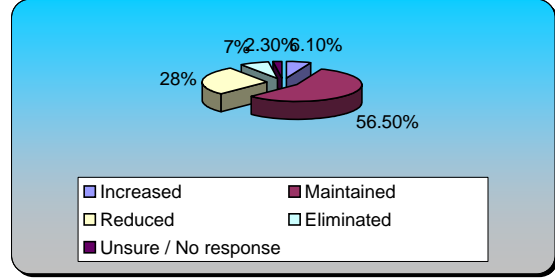


75.) Enforcing Zoning Ordinances (multiple choice) Responses

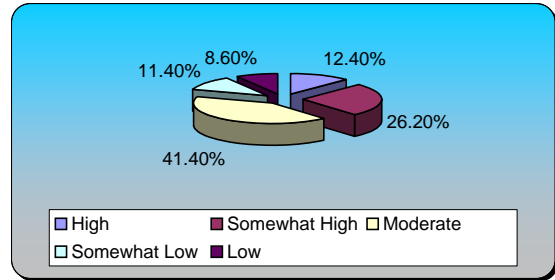
Need	133	63.33%
Want	59	28.10%
Unsure / No Response	18	8.57%
Totals	210	100%



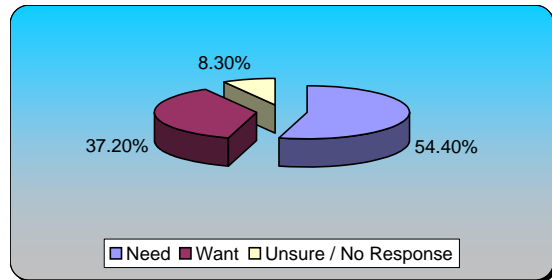
76.) Enforcing Zoning Ordinances (multiple choice)		Responses	
Increased	13	6.07%	
Maintained	121	56.54%	
Reduced	60	28.04%	
Eliminated	15	7.01%	
Unsure / No response	5	2.34%	
Totals	214	100%	



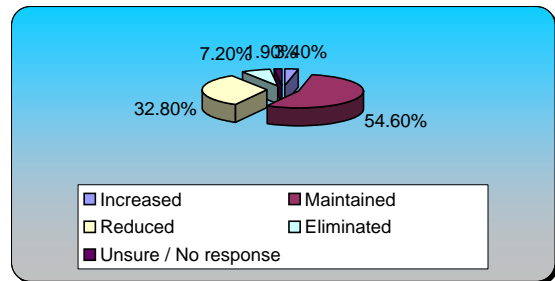
77.) Enforcing Zoning Ordinances (multiple choice)		Responses	
High	26	12.38%	
Somewhat High	55	26.19%	
Moderate	87	41.43%	
Somewhat Low	24	11.43%	
Low	18	8.57%	
Totals	210	100%	



78.) Building & Land Use Plan Review (multiple choice)		Responses	
Need	111	54.41%	
Want	76	37.25%	
Unsure / No Response	17	8.33%	
Totals	204	100%	

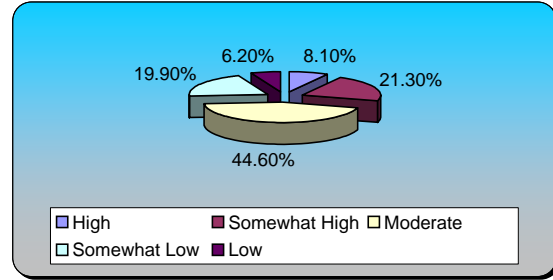


79.) Building & Land Use Plan Review (multiple choice)		Responses	
Increased	7	3.38%	
Maintained	113	54.59%	
Reduced	68	32.85%	
Eliminated	15	7.25%	
Unsure / No response	4	1.93%	
Totals	207	100%	



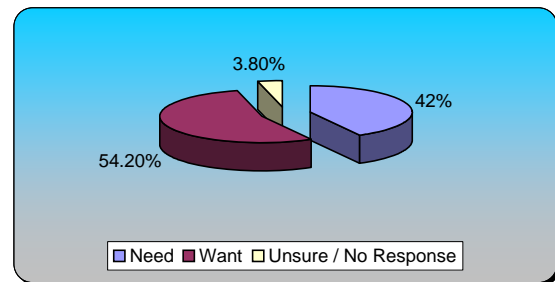
80.) Building & Land Use Plan Review (multiple choice)

	Responses	
High	17	8.06%
Somewhat High	45	21.33%
Moderate	94	44.55%
Somewhat Low	42	19.91%
Low	13	6.16%
Totals	211	100%



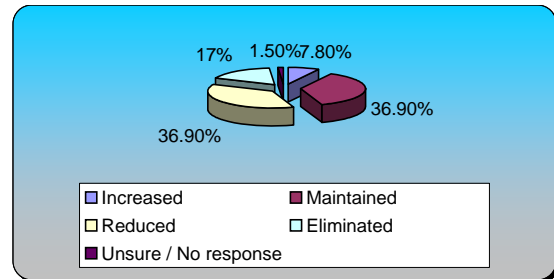
81.) Services to Support Neighborhoods (multiple choice)

	Responses	
Need	89	41.98%
Want	115	54.25%
Unsure / No Response	8	3.77%
Totals	212	100%



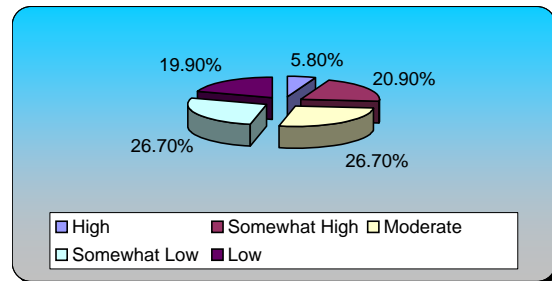
82.) Services to Support Neighborhoods (multiple choice)

	Responses	
Increased	16	7.77%
Maintained	76	36.89%
Reduced	76	36.89%
Eliminated	35	16.99%
Unsure / No response	3	1.46%
Totals	206	100%



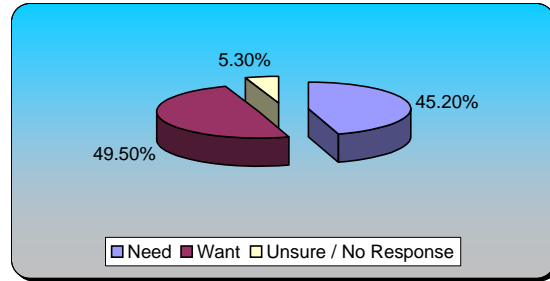
83.) Services to Support Neighborhoods (multiple choice)

	Responses	
High	12	5.83%
Somewhat High	43	20.87%
Moderate	55	26.70%
Somewhat Low	55	26.70%
Low	41	19.90%
Totals	206	100%



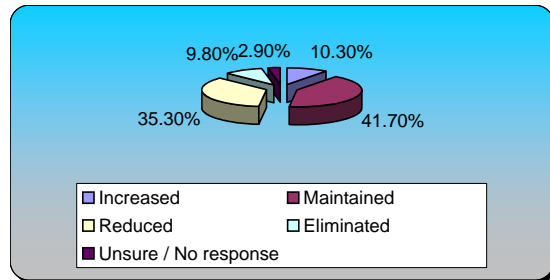
84.) Foster Civic Engagement Opportunities (multiple choice)

	Responses	
Need	94	45.19%
Want	103	49.52%
Unsure / No Response	11	5.29%
Totals	208	100%



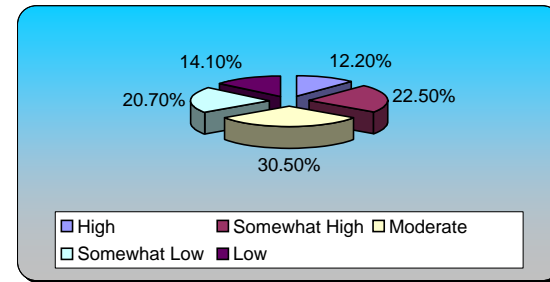
85.) Foster Civic Engagement Opportunities (multiple choice)

	Responses	
Increased	21	10.29%
Maintained	85	41.67%
Reduced	72	35.29%
Eliminated	20	9.80%
Unsure / No response	6	2.94%
Totals	204	100%



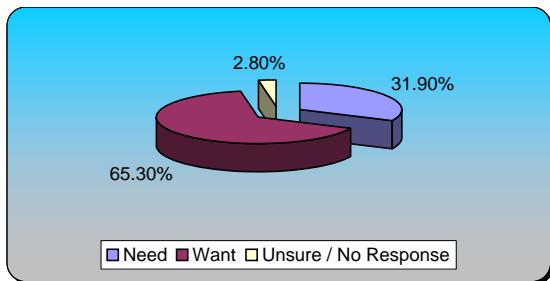
86.) Fostering Civic Engagement Opportunities (multiple choice)

	Responses	
High	26	12.21%
Somewhat High	48	22.54%
Moderate	65	30.52%
Somewhat Low	44	20.66%
Low	30	14.08%
Totals	213	100%



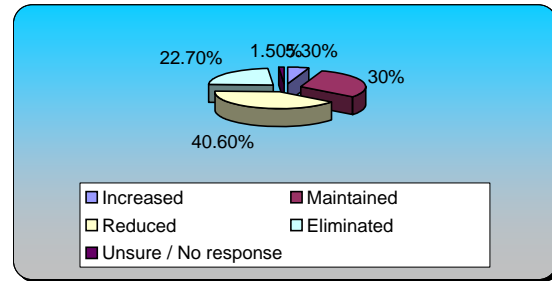
87.) Improving Image of Neighborhoods (multiple choice)

	Responses	
Need	68	31.92%
Want	139	65.26%
Unsure / No Response	6	2.82%
Totals	213	100%



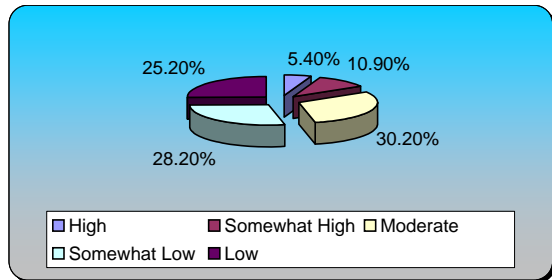
88.) Improving Image of Neighborhoods (multiple choice)

	Responses	
Increased	11	5.31%
Maintained	62	29.95%
Reduced	84	40.58%
Eliminated	47	22.71%
Unsure / No response	3	1.45%
Totals	207	100%



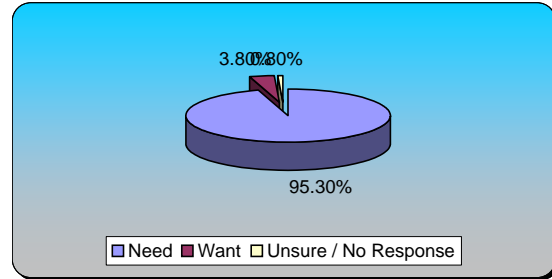
89.) Improving Image of Neighborhoods (multiple choice)

	Responses	
High	11	5.45%
Somewhat High	22	10.89%
Moderate	61	30.20%
Somewhat Low	57	28.22%
Low	51	25.25%
Totals	202	100%



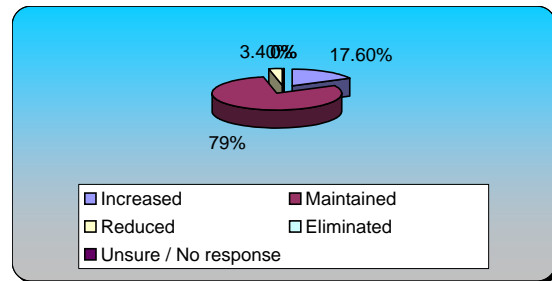
90.) E911 - Dispatch (multiple choice)

	Responses	
Need	224	95.32%
Want	9	3.83%
Unsure / No Response	2	0.85%
Totals	235	100%

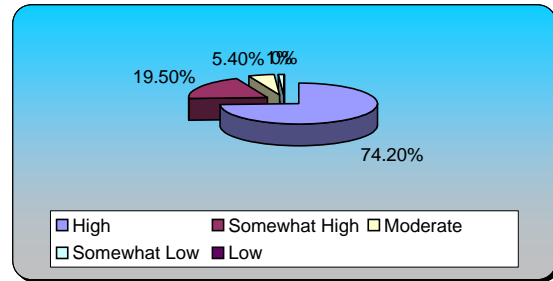


91.) E911 - Dispatch (multiple choice)

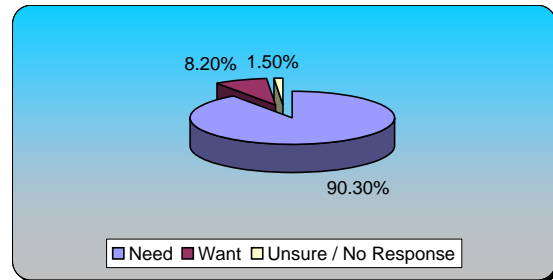
	Responses	
Increased	36	17.56%
Maintained	162	79.02%
Reduced	7	3.41%
Eliminated	0	0%
Unsure / No response	0	0%
Totals	205	100%



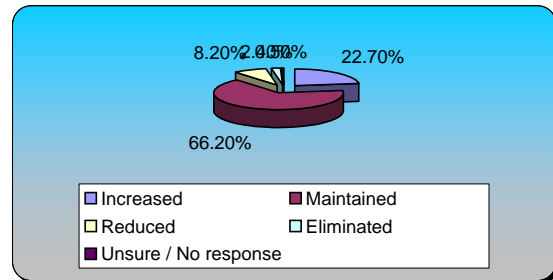
92.) E911 - Dispatch (multiple choice)	Responses	
High	152	74.15%
Somewhat High	40	19.51%
Moderate	11	5.37%
Somewhat Low	2	0.98%
Low	0	0%
Totals	205	100%



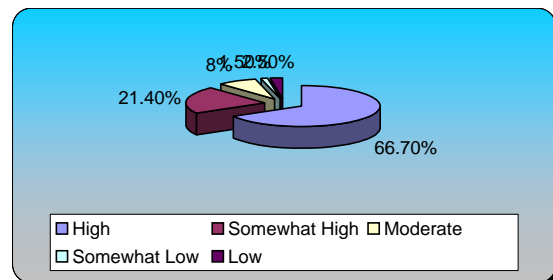
93.) Uniform Patrol (multiple choice)	Responses	
Need	187	90.34%
Want	17	8.21%
Unsure / No Response	3	1.45%
Totals	207	100%



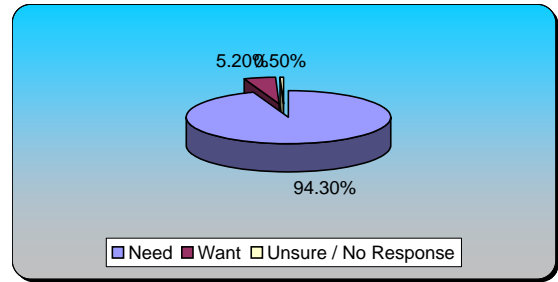
94.) Uniform Patrol (multiple choice)	Responses	
Increased	47	22.71%
Maintained	137	66.18%
Reduced	17	8.21%
Eliminated	5	2.42%
Unsure / No response	1	0.48%
Totals	207	100%



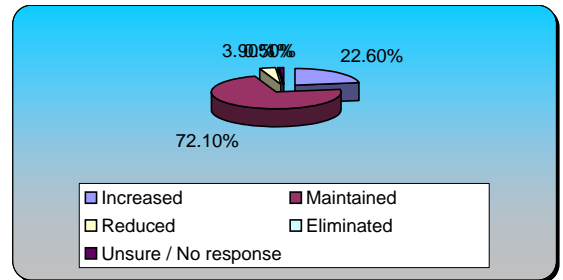
95.) Uniform Patrol (multiple choice)	Responses	
High	134	66.67%
Somewhat High	43	21.39%
Moderate	16	7.96%
Somewhat Low	3	1.49%
Low	5	2.49%
Totals	201	100%



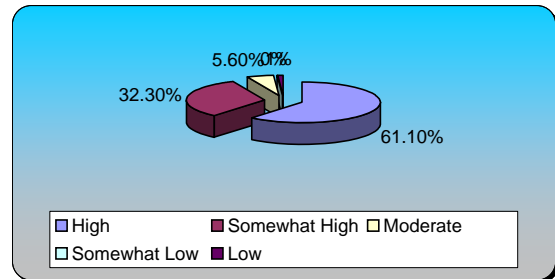
96.) Crime Investigation (multiple choice)	Responses	
Need	200	94.34%
Want	11	5.19%
Unsure / No Response	1	0.47%
Totals	212	100%



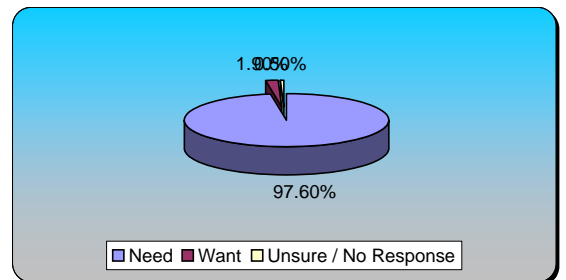
97.) Crime Investigation (multiple choice)	Responses	
Increased	46	22.55%
Maintained	147	72.06%
Reduced	8	3.92%
Eliminated	1	0.49%
Unsure / No response	2	0.98%
Totals	204	100%



98.) Crime Investigation (multiple choice)	Responses	
High	121	61.11%
Somewhat High	64	32.32%
Moderate	11	5.56%
Somewhat Low	0	0%
Low	2	1.01%
Totals	198	100%

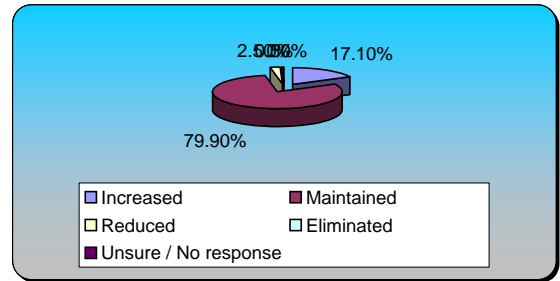


99.) Emergency Medical & Fire Response (multiple choice)	Responses	
Need	201	97.57%
Want	4	1.94%
Unsure / No Response	1	0.49%
Totals	206	100%



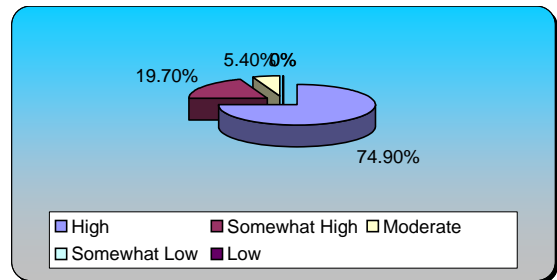
100.) Emergency Medical & Fire Response (multiple choice)

	Responses	
Increased	34	17.09%
Maintained	159	79.90%
Reduced	5	2.51%
Eliminated	0	0%
Unsure / No response	1	0.50%
Totals	199	100%



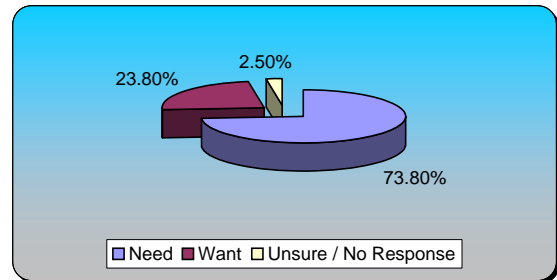
101.) Emergency Medical & Fire Response (multiple choice)

	Responses	
High	152	74.88%
Somewhat High	40	19.70%
Moderate	11	5.42%
Somewhat Low	0	0%
Low	0	0%
Totals	203	100%



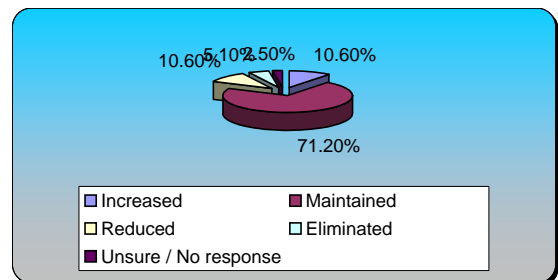
102.) Financial Support for Volunteer Firefighters (multiple choice)

	Responses	
Need	149	73.76%
Want	48	23.76%
Unsure / No Response	5	2.48%
Totals	202	100%



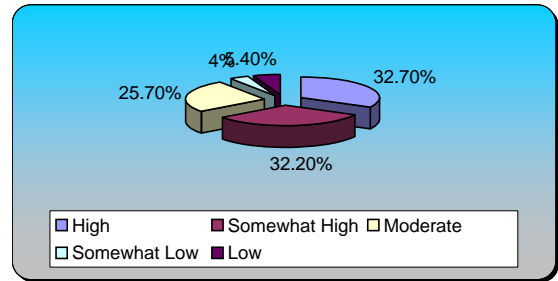
103.) Financial Support for Volunteer Firefighters (multiple choice)

	Responses	
Increased	21	10.61%
Maintained	141	71.21%
Reduced	21	10.61%
Eliminated	10	5.05%
Unsure / No response	5	2.53%
Totals	198	100%



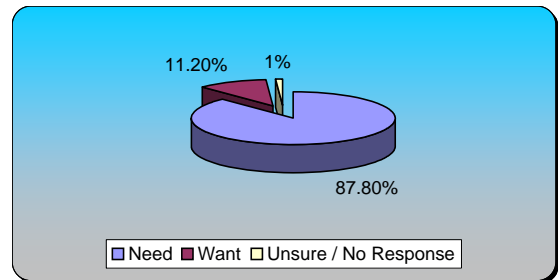
**104.) Financial Support for Volunteer Firefighters
(multiple choice)**

	Responses	
High	66	32.67%
Somewhat High	65	32.18%
Moderate	52	25.74%
Somewhat Low	8	3.96%
Low	11	5.45%
Totals	202	100%



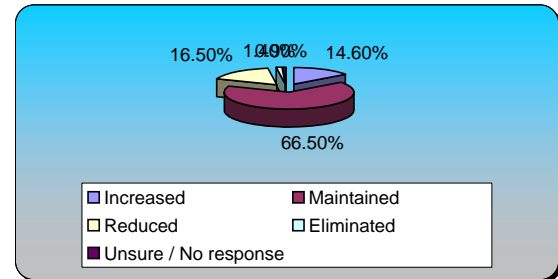
**105.) Disaster Preparedness & Management
(multiple choice)**

	Responses	
Need	180	87.80%
Want	23	11.22%
Unsure / No Response	2	0.98%
Totals	205	100%



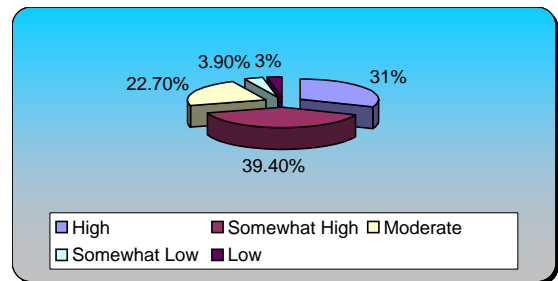
**106.) Disaster Preparedness & Management
(multiple choice)**

	Responses	
Increased	31	14.62%
Maintained	141	66.51%
Reduced	35	16.51%
Eliminated	3	1.42%
Unsure / No response	2	0.94%
Totals	212	100%



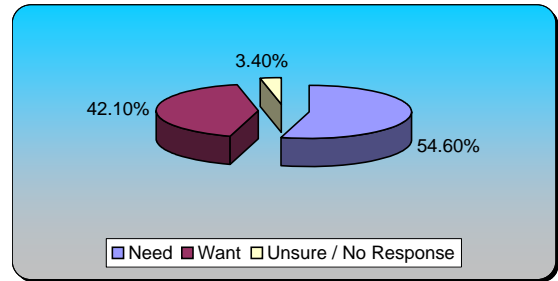
**107.) Disaster Preparedness & Management
(multiple choice)**

	Responses	
High	63	31.03%
Somewhat High	80	39.41%
Moderate	46	22.66%
Somewhat Low	8	3.94%
Low	6	2.96%
Totals	203	100%



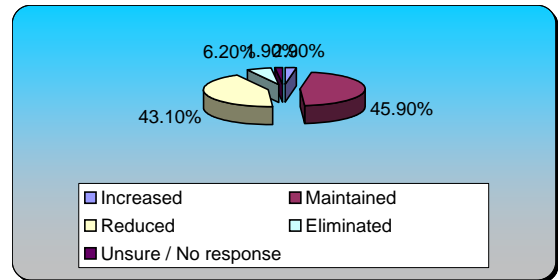
108.) Animal Control Services (multiple choice) Responses

Need	114	54.55%
Want	88	42.11%
Unsure / No Response	7	3.35%
Totals	209	100%



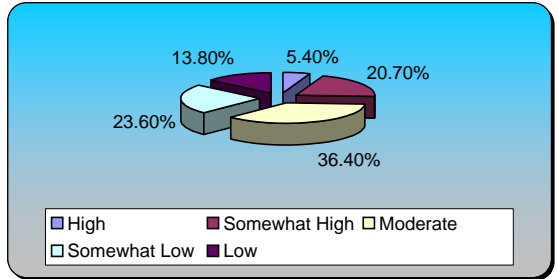
109.) Animal Control Services (multiple choice) Responses

Increased	6	2.87%
Maintained	96	45.93%
Reduced	90	43.06%
Eliminated	13	6.22%
Unsure / No response	4	1.91%
Totals	209	100%



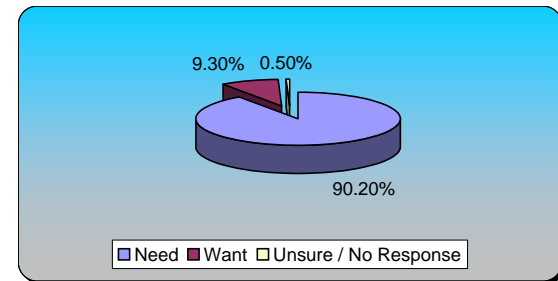
110.) Animal Control Services (multiple choice) Responses

High	11	5.42%
Somewhat High	42	20.69%
Moderate	74	36.45%
Somewhat Low	48	23.65%
Low	28	13.79%
Totals	203	100%



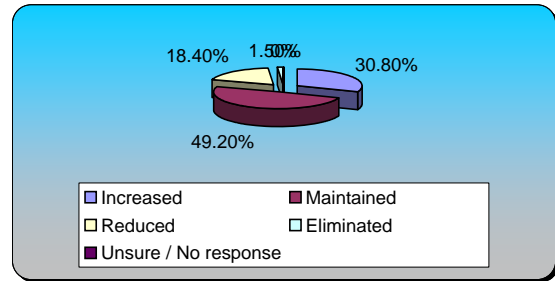
111.) Public Schools for Grades K thru 12 (multiple choice) Responses

Need	185	90.24%
Want	19	9.27%
Unsure / No Response	1	0.49%
Totals	205	100%



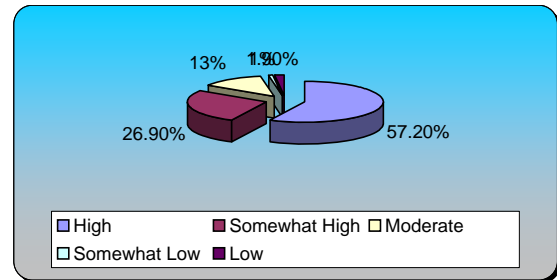
112.) Public Schools for Grades K thru 12 (multiple choice)

	Responses	
Increased	62	30.85%
Maintained	99	49.25%
Reduced	37	18.41%
Eliminated	3	1.49%
Unsure / No response	0	0%
Totals	201	100%



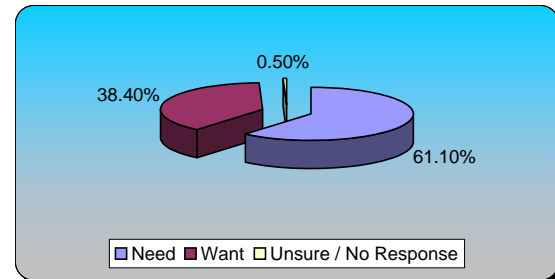
113.) Public Schools for Grades K thru 12 (multiple choice)

	Responses	
High	119	57.21%
Somewhat High	56	26.92%
Moderate	27	12.98%
Somewhat Low	2	0.96%
Low	4	1.92%
Totals	208	100%



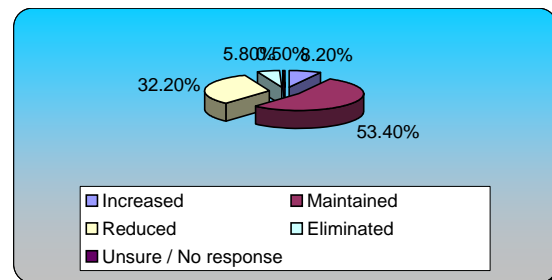
114.) Maintain School Grounds (multiple choice)

	Responses	
Need	129	61.14%
Want	81	38.39%
Unsure / No Response	1	0.47%
Totals	211	100%

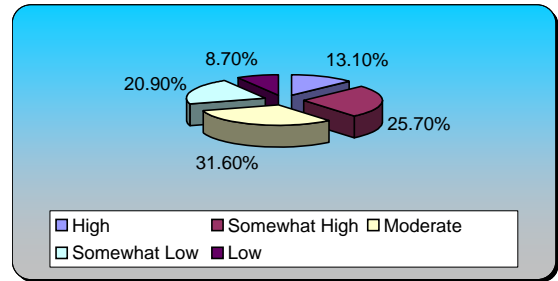


115.) Maintain School Grounds (multiple choice)

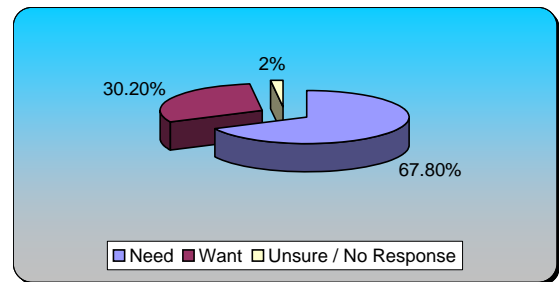
	Responses	
Increased	17	8.17%
Maintained	111	53.37%
Reduced	67	32.21%
Eliminated	12	5.77%
Unsure / No response	1	0.48%
Totals	208	100%



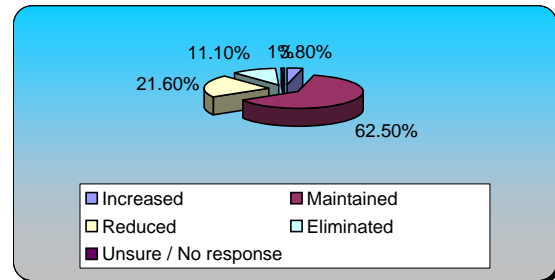
116.) Maintain School Grounds (multiple choice)	Responses	
High	27	13.11%
Somewhat High	53	25.73%
Moderate	65	31.55%
Somewhat Low	43	20.87%
Low	18	8.74%
Totals	206	100%



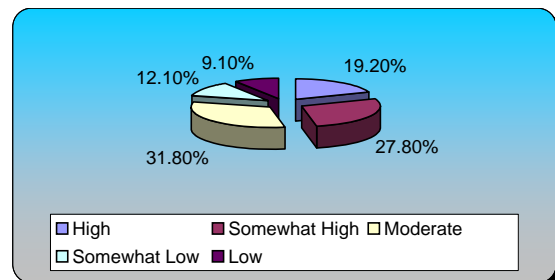
117.) School Crossing Guards (multiple choice)	Responses	
Need	139	67.80%
Want	62	30.24%
Unsure / No Response	4	1.95%
Totals	205	100%



118.) School Crossing Guards (multiple choice)	Responses	
Increased	8	3.85%
Maintained	130	62.50%
Reduced	45	21.63%
Eliminated	23	11.06%
Unsure / No response	2	0.96%
Totals	208	100%

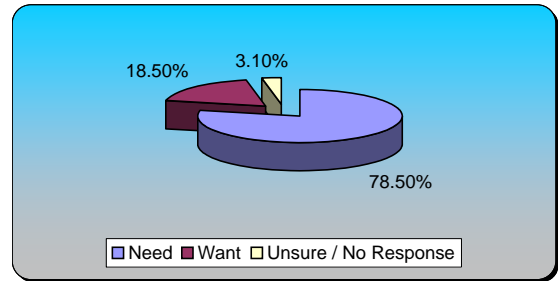


119.) School Crossing Guards (multiple choice)	Responses	
High	38	19.19%
Somewhat High	55	27.78%
Moderate	63	31.82%
Somewhat Low	24	12.12%
Low	18	9.09%
Totals	198	100%



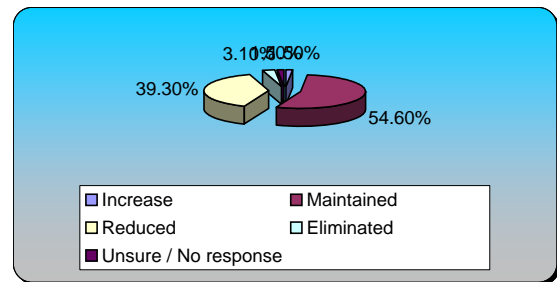
120.) Internal Government Support (multiple choice) Responses

Need	153	78.46%
Want	36	18.46%
Unsure / No Response	6	3.08%
Totals	195	100%



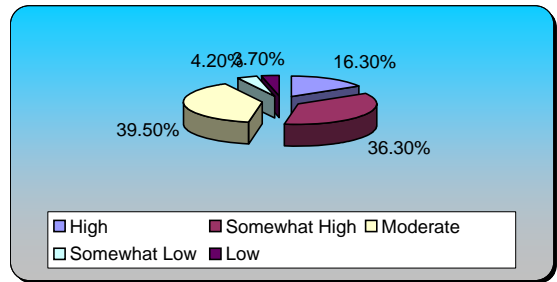
121.) Internal Government Support (multiple choice) Responses

Increase	3	1.53%
Maintained	107	54.59%
Reduced	77	39.29%
Eliminated	6	3.06%
Unsure / No response	3	1.53%
Totals	196	100%



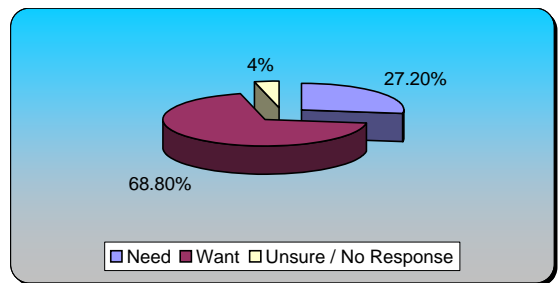
122.) Internal Government Support (multiple choice) Responses

High	31	16.32%
Somewhat High	69	36.32%
Moderate	75	39.47%
Somewhat Low	8	4.21%
Low	7	3.68%
Totals	190	100%



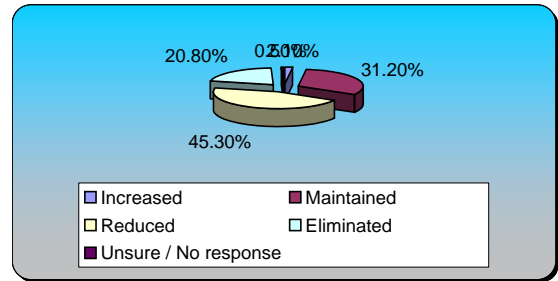
123.) Cable Broadcast Programming (multiple choice)

Need	55	27.23%
Want	139	68.81%
Unsure / No Response	8	3.96%
Totals	202	100%



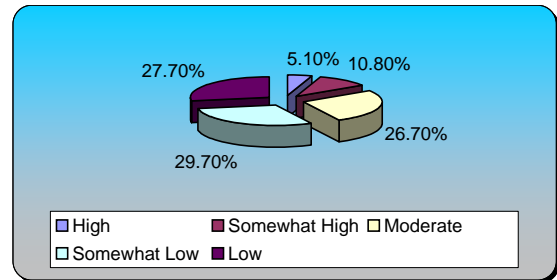
124.) Cable Broadcast Programming (multiple choice)

	Responses	
Increased	4	2.08%
Maintained	60	31.25%
Reduced	87	45.31%
Eliminated	40	20.83%
Unsure / No response	1	0.52%
Totals	192	100%



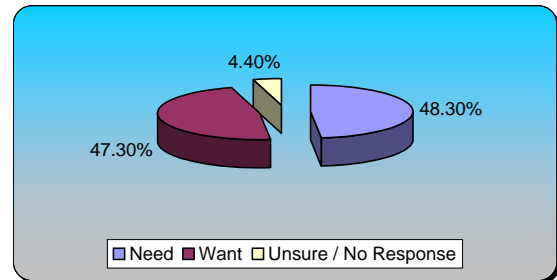
125.) Cable Broadcast Programming (multiple choice)

	Responses	
High	10	5.13%
Somewhat High	21	10.77%
Moderate	52	26.67%
Somewhat Low	58	29.74%
Low	54	27.69%
Totals	195	100%



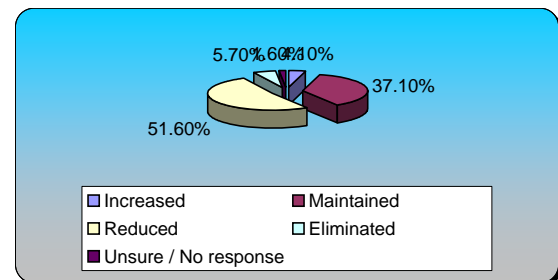
126.) Communicating with the Public & Media (multiple choice)

	Responses	
Need	99	48.29%
Want	97	47.32%
Unsure / No Response	9	4.39%
Totals	205	100%



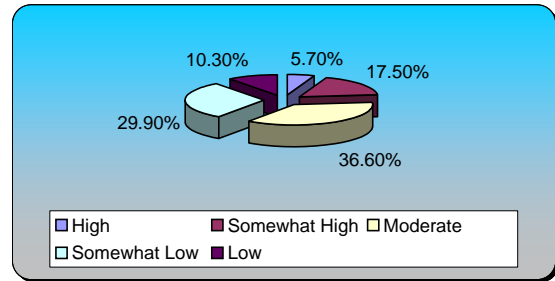
127.) Communicating with the Public & Media (multiple choice)

	Responses	
Increased	8	4.12%
Maintained	72	37.11%
Reduced	100	51.55%
Eliminated	11	5.67%
Unsure / No response	3	1.55%
Totals	194	100%



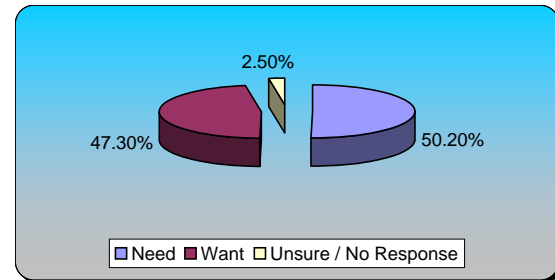
128.) Communicating with the Public & Media (multiple choice)

	Responses	
High	11	5.67%
Somewhat High	34	17.53%
Moderate	71	36.60%
Somewhat Low	58	29.90%
Low	20	10.31%
Totals	194	100%



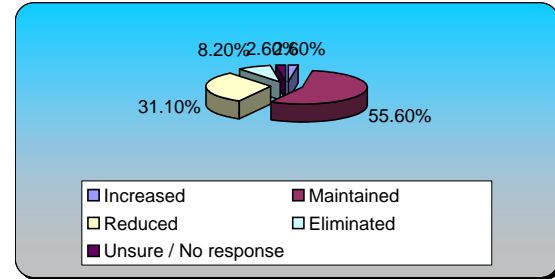
129.) 311 Customer Call Center (multiple choice)

	Responses	
Need	101	50.25%
Want	95	47.26%
Unsure / No Response	5	2.49%
Totals	201	100%



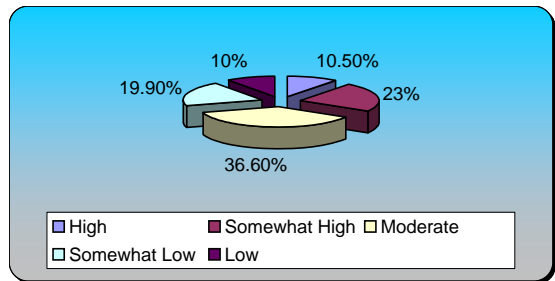
130.) 311 Customer Call Center (multiple choice)

	Responses	
Increased	5	2.55%
Maintained	109	55.61%
Reduced	61	31.12%
Eliminated	16	8.16%
Unsure / No response	5	2.55%
Totals	196	100%



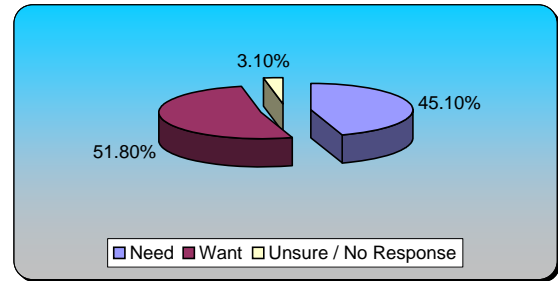
131.) 311 Customer Call Center (multiple choice)

	Responses	
High	20	10.47%
Somewhat High	44	23.04%
Moderate	70	36.65%
Somewhat Low	38	19.90%
Low	19	9.95%
Totals	191	100%



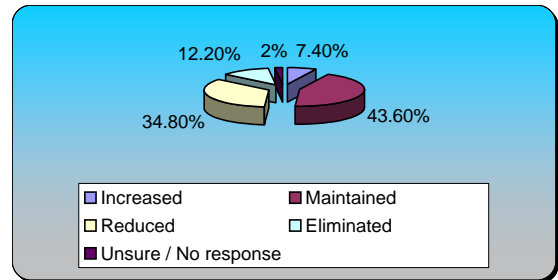
132.) Coalition for Youth Services (multiple choice) Responses

Need	88	45.13%
Want	101	51.79%
Unsure / No Response	6	3.08%
Totals	195	100%



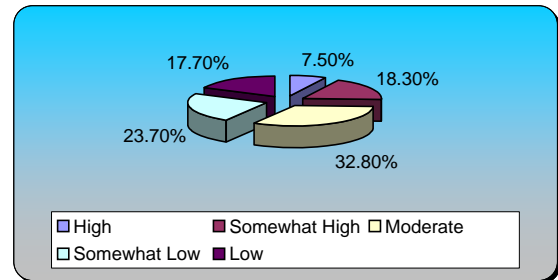
133.) Coalition for Youth Services (multiple choice) Responses

Increased	15	7.35%
Maintained	89	43.63%
Reduced	71	34.80%
Eliminated	25	12.25%
Unsure / No response	4	1.96%
Totals	204	100%



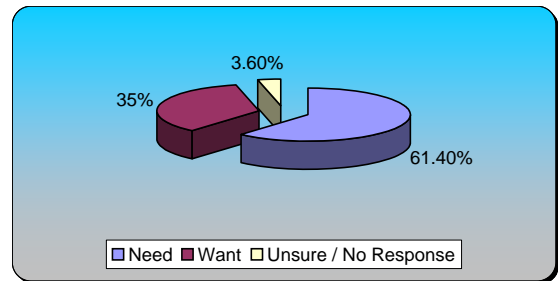
134.) Coalition for Youth Services (multiple choice) Responses

High	14	7.53%
Somewhat High	34	18.28%
Moderate	61	32.80%
Somewhat Low	44	23.66%
Low	33	17.74%
Totals	186	100%

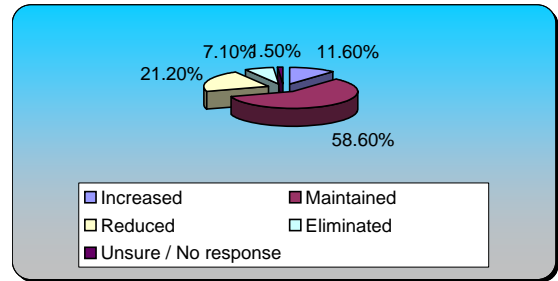


135.) Healthy Start Program (multiple choice) Responses

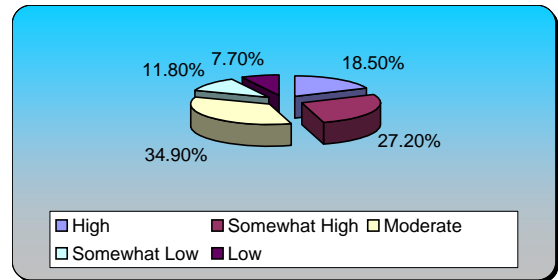
Need	121	61.42%
Want	69	35.03%
Unsure / No Response	7	3.55%
Totals	197	100%



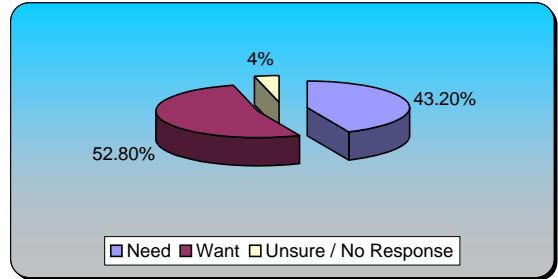
136.) Healthy Start Program (multiple choice)	Responses	
Increased	23	11.62%
Maintained	116	58.59%
Reduced	42	21.21%
Eliminated	14	7.07%
Unsure / No response	3	1.52%
Totals	198	100%



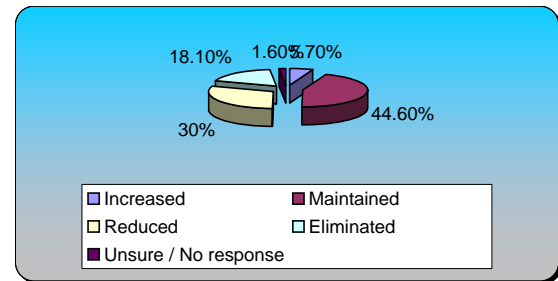
137.) Healthy Start Program (multiple choice)	Responses	
High	36	18.46%
Somewhat High	53	27.18%
Moderate	68	34.87%
Somewhat Low	23	11.79%
Low	15	7.69%
Totals	195	100%



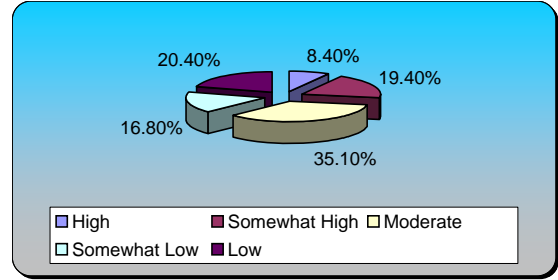
138.) Parenting Programs (multiple choice)	Responses	
Need	86	43.22%
Want	105	52.76%
Unsure / No Response	8	4.02%
Totals	199	100%



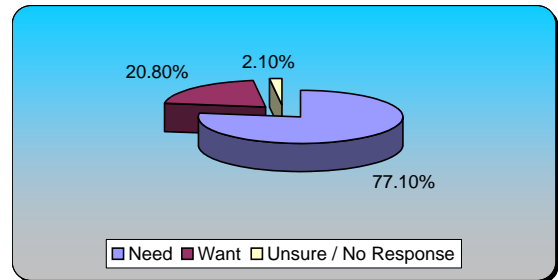
139.) Parenting Programs (multiple choice)	Responses	
Increased	11	5.70%
Maintained	86	44.56%
Reduced	58	30.05%
Eliminated	35	18.13%
Unsure / No response	3	1.55%
Totals	193	100%



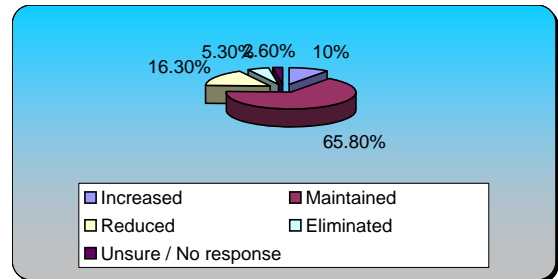
140.) Parenting Programs (multiple choice)	Responses	
High	16	8.38%
Somewhat High	37	19.37%
Moderate	67	35.08%
Somewhat Low	32	16.75%
Low	39	20.42%
Totals	191	100%



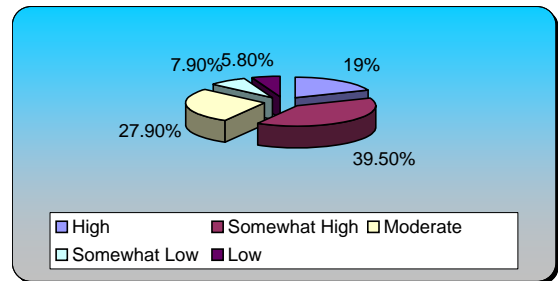
141.) Social Services Programs (multiple choice)	Responses	
Need	148	77.08%
Want	40	20.83%
Unsure / No Response	4	2.08%
Totals	192	100%



142.) Social Services Programs (multiple choice)	Responses	
Increased	19	10%
Maintained	125	65.79%
Reduced	31	16.32%
Eliminated	10	5.26%
Unsure / No response	5	2.63%
Totals	190	100%

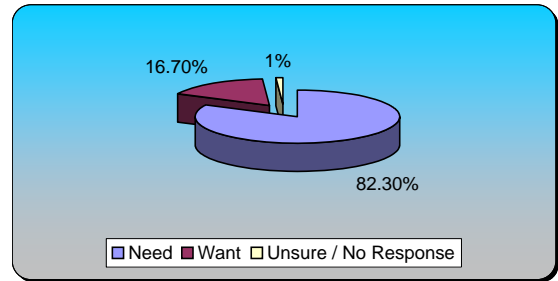


143.) Social Services Programs (multiple choice)	Responses	
High	36	18.95%
Somewhat High	75	39.47%
Moderate	53	27.89%
Somewhat Low	15	7.89%
Low	11	5.79%
Totals	190	100%



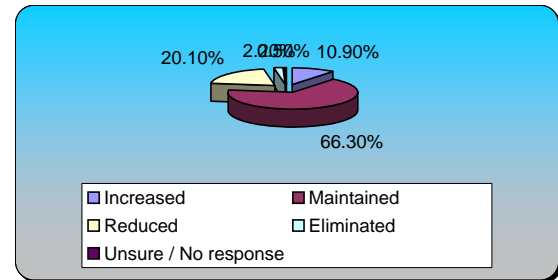
144.) Health Department Programs (multiple choice) Responses

Need	158	82.29%
Want	32	16.67%
Unsure / No Response	2	1.04%
Totals	192	100%



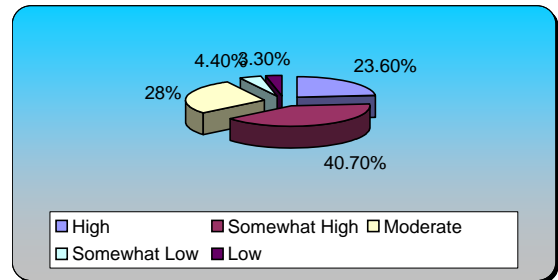
145.) Health Department Programs (multiple choice) Responses

Increased	20	10.87%
Maintained	122	66.30%
Reduced	37	20.11%
Eliminated	4	2.17%
Unsure / No response	1	0.54%
Totals	184	100%



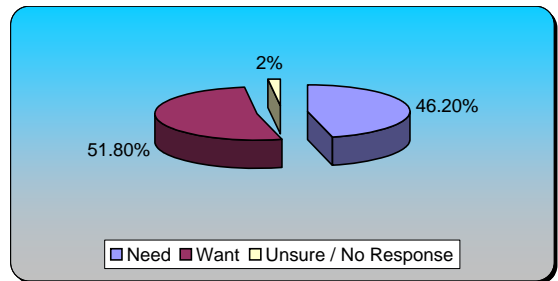
146.) Health Department Programs (multiple choice) Responses

High	43	23.63%
Somewhat High	74	40.66%
Moderate	51	28.02%
Somewhat Low	8	4.40%
Low	6	3.30%
Totals	182	100%

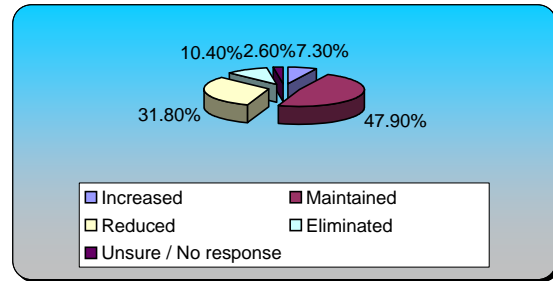


147.) Teen Center Operations (multiple choice) Responses

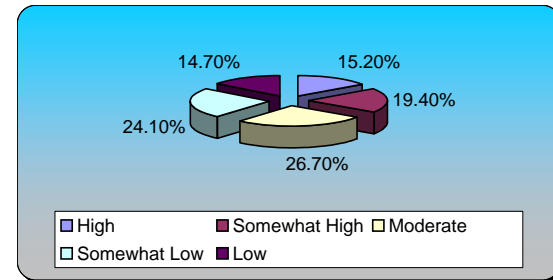
Need	92	46.23%
Want	103	51.76%
Unsure / No Response	4	2.01%
Totals	199	100%



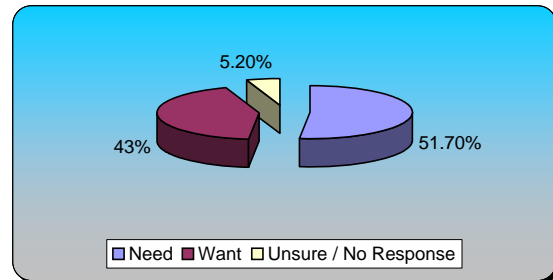
148.) Teen Center Operations (multiple choice)	Responses	
Increased	14	7.29%
Maintained	92	47.92%
Reduced	61	31.77%
Eliminated	20	10.42%
Unsure / No response	5	2.60%
Totals	192	100%



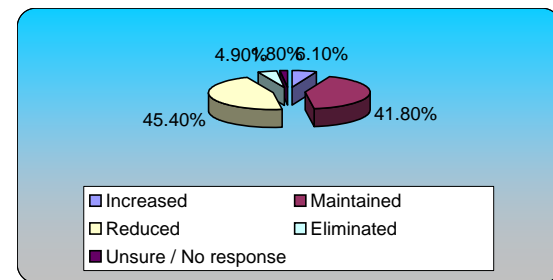
149.) Teen Center Operations (multiple choice)	Responses	
High	29	15.18%
Somewhat High	37	19.37%
Moderate	51	26.70%
Somewhat Low	46	24.08%
Low	28	14.66%
Totals	191	100%



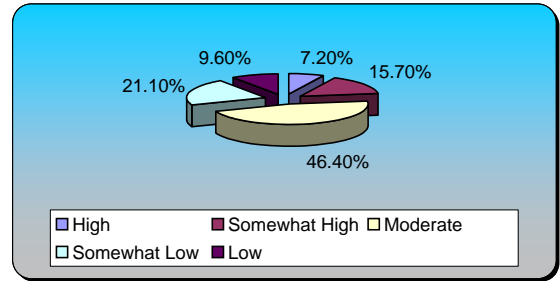
150.) Outside Agency Funding (multiple choice)	Responses	
Need	89	51.74%
Want	74	43.02%
Unsure / No Response	9	5.23%
Totals	172	100%



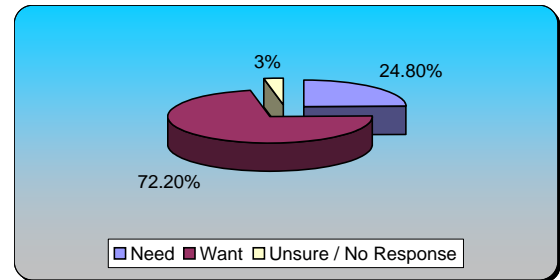
151.) Outside Agency Funding (multiple choice)	Responses	
Increased	10	6.06%
Maintained	69	41.82%
Reduced	75	45.45%
Eliminated	8	4.85%
Unsure / No response	3	1.82%
Totals	165	100%



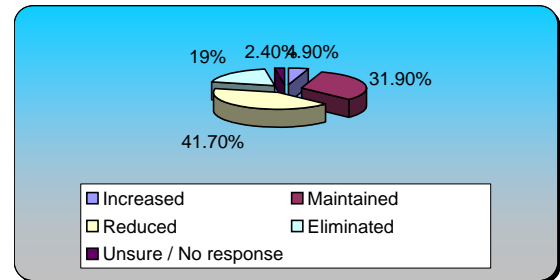
152.) Outside Agency Funding (multiple choice)	Responses	
High	12	7.23%
Somewhat High	26	15.66%
Moderate	77	46.39%
Somewhat Low	35	21.08%
Low	16	9.64%
Totals	166	100%



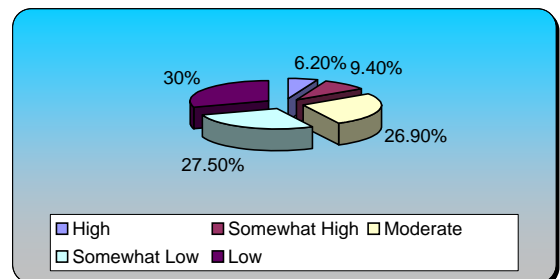
153.) Arts Commission/American Theater (multiple choice)	Responses	
Need	42	24.85%
Want	122	72.19%
Unsure / No Response	5	2.96%
Totals	169	100%



154.) Arts Commission/American Theater (multiple choice)	Responses	
Increased	8	4.91%
Maintained	52	31.90%
Reduced	68	41.72%
Eliminated	31	19.02%
Unsure / No response	4	2.45%
Totals	163	100%



155.) Arts Commission/American Theater (multiple choice)	Responses	
High	10	6.25%
Somewhat High	15	9.38%
Moderate	43	26.88%
Somewhat Low	44	27.50%
Low	48	30%
Totals	160	100%



156.) Potential Revenue Options (multiple choice)	Responses	
Real Estate Tax Rate (To offset decreased ass...	52	9.68%
Personal Property Rate (includes Boat Tax and...	74	13.78%
Amusement / Admissions Tax	80	14.90%
Cigarette Tax	130	24.21%
Restaurant Meals Tax	49	9.12%
User Fees for Services (Golf Course, Recreati...	105	19.55%
No Increases in Fees or Taxes	41	7.64%
Unsure / No response	6	1.12%
Totals	537	100%

