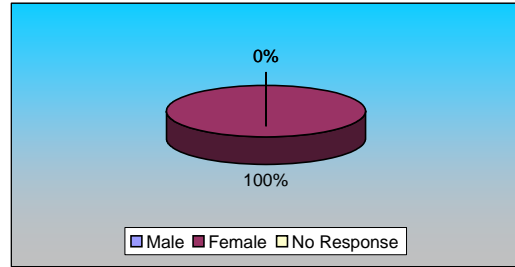


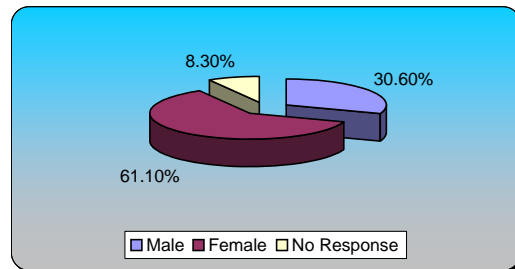
**Youth Forum of Budget Week  
Turning Graphical Results by Question**

Session Name: Youth Forum\_Teen Center 3-1-2010  
Created: 3/2/2010 12:45 PM

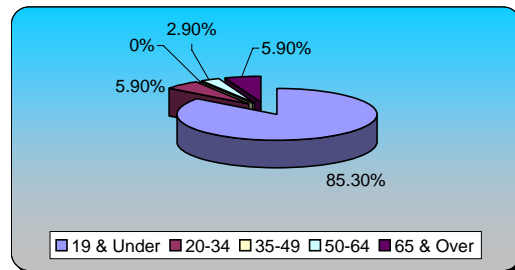
1.) Gender (multiple choice)	Responses	
Male	0	0%
Female	2	100%
No Response	0	0%
<b>Totals</b>	<b>2</b>	<b>100%</b>



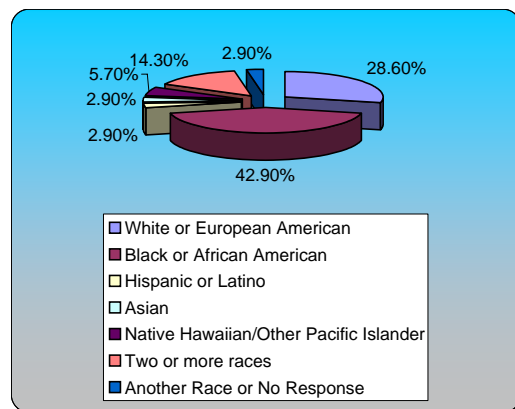
2.) Gender (multiple choice)	Responses	
Male	11	30.56%
Female	22	61.11%
No Response	3	8.33%
<b>Totals</b>	<b>36</b>	<b>100%</b>



3.) Age (multiple choice)	Responses	
19 & Under	29	85.29%
20-34	2	5.88%
35-49	0	0%
50-64	1	2.94%
65 & Over	2	5.88%
<b>Totals</b>	<b>34</b>	<b>100%</b>

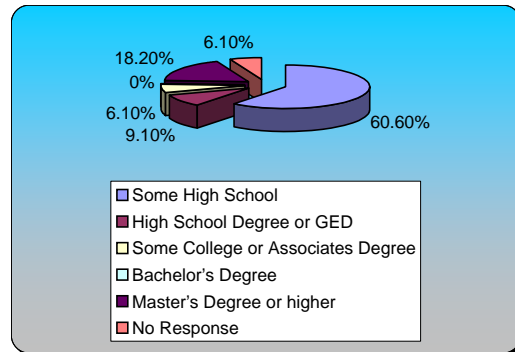


4.) Race (multiple choice)	Responses	
White or European American	10	28.57%
Black or African American	15	42.86%
Hispanic or Latino	1	2.86%
Asian	1	2.86%
Native Hawaiian/Other Pacific Islander	2	5.71%
Two or more races	5	14.29%
Another Race or No Response	1	2.86%
<b>Totals</b>	<b>35</b>	<b>100%</b>



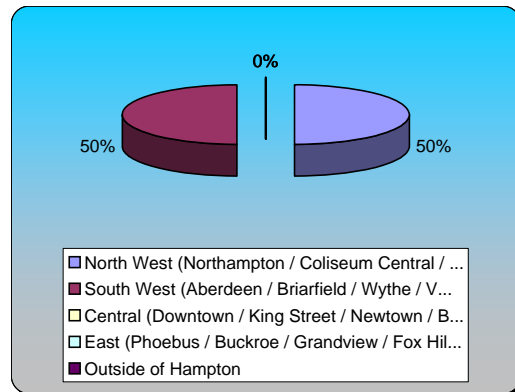
**5.) Education Level (multiple choice)**

	Responses	
Some High School	20	60.61%
High School Degree or GED	3	9.09%
Some College or Associates Degree	2	6.06%
Bachelor's Degree	0	0%
Master's Degree or higher	6	18.18%
No Response	2	6.06%
<b>Totals</b>	<b>33</b>	<b>100%</b>



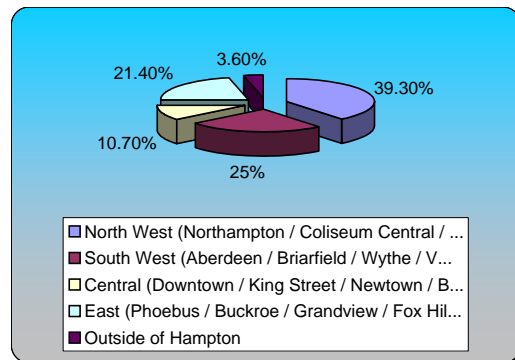
**6.) Neighborhood Area (Where you Live, Work, Invest, or Visit most) (multiple choice)**

	Responses	
North West (Northampton / Coliseum Central / ...	2	50%
South West (Aberdeen / Briarfield / Wythe / V...	2	50%
Central (Downtown / King Street / Newtown / B...	0	0%
East (Phoebus / Buckroe / Grandview / Fox Hil...	0	0%
Outside of Hampton	0	0%
<b>Totals</b>	<b>4</b>	<b>100%</b>



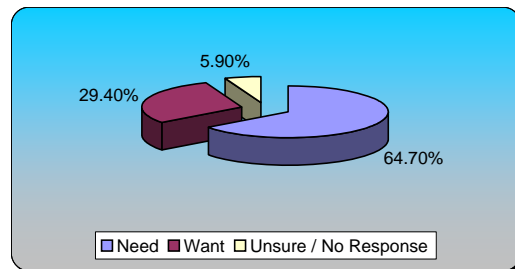
**7.) Neighborhood Area (Where you Live, Work, Invest, or Visit most) (multiple choice)**

	Responses	
North West (Northampton / Coliseum Central / ...	11	39.29%
South West (Aberdeen / Briarfield / Wythe / V...	7	25%
Central (Downtown / King Street / Newtown / B...	3	10.71%
East (Phoebus / Buckroe / Grandview / Fox Hil...	6	21.43%
Outside of Hampton	1	3.57%
<b>Totals</b>	<b>28</b>	<b>100%</b>



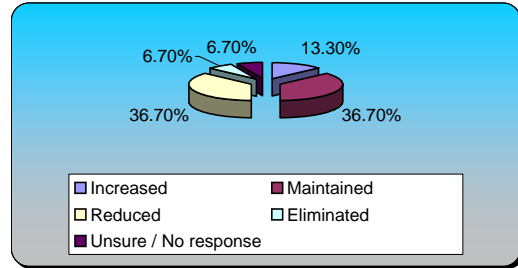
**8.) Community & Neighborhood Centers (multiple choice)**

	Responses	
Need	22	64.71%
Want	10	29.41%
Unsure / No Response	2	5.88%
<b>Totals</b>	<b>34</b>	<b>100%</b>



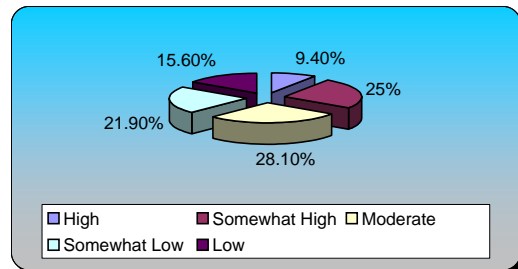
**9.) Community & Neighborhood Centers (multiple choice)**

	Responses	
Increased	4	13.33%
Maintained	11	36.67%
Reduced	11	36.67%
Eliminated	2	6.67%
Unsure / No response	2	6.67%
<b>Totals</b>	<b>30</b>	<b>100%</b>



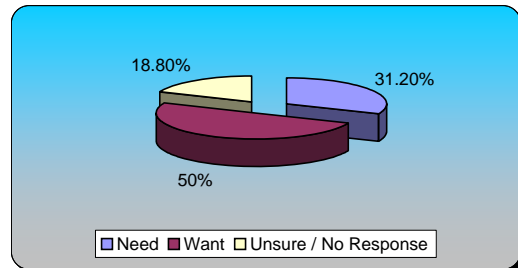
**10.) Community & Neighborhood Centers (multiple choice)**

	Responses	
High	3	9.38%
Somewhat High	8	25%
Moderate	9	28.12%
Somewhat Low	7	21.88%
Low	5	15.62%
<b>Totals</b>	<b>32</b>	<b>100%</b>



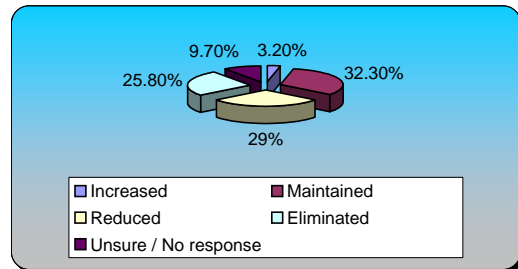
**11.) Community Outreach on Diversity (multiple choice)**

	Responses	
Need	10	31.25%
Want	16	50%
Unsure / No Response	6	18.75%
<b>Totals</b>	<b>32</b>	<b>100%</b>



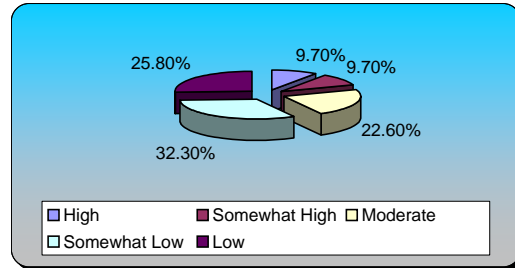
**12.) Community Outreach on Diversity (multiple choice)**

	Responses	
Increased	1	3.23%
Maintained	10	32.26%
Reduced	9	29.03%
Eliminated	8	25.81%
Unsure / No response	3	9.68%
<b>Totals</b>	<b>31</b>	<b>100%</b>



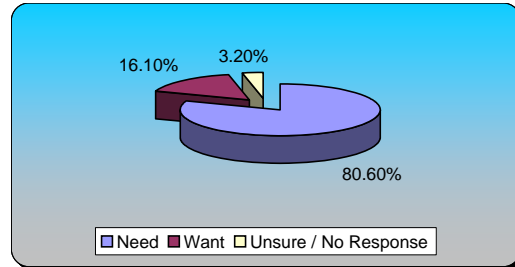
**13.) Community Outreach on Diversity (multiple choice)**

	Responses	
High	3	9.68%
Somewhat High	3	9.68%
Moderate	7	22.58%
Somewhat Low	10	32.26%
Low	8	25.81%
<b>Totals</b>	<b>31</b>	<b>100%</b>



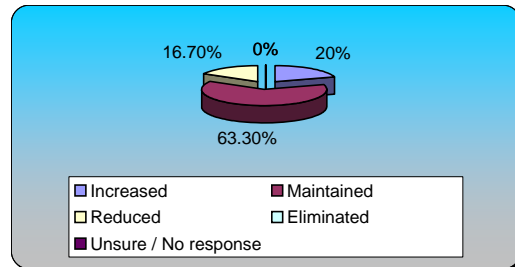
**14.) Public Libraries (multiple choice)**

	Responses	
Need	25	80.65%
Want	5	16.13%
Unsure / No Response	1	3.23%
<b>Totals</b>	<b>31</b>	<b>100%</b>



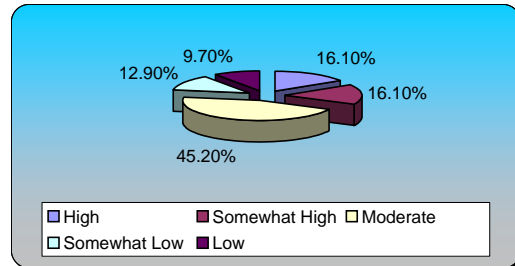
**15.) Public Libraries (multiple choice)**

	Responses	
Increased	6	20%
Maintained	19	63.33%
Reduced	5	16.67%
Eliminated	0	0%
Unsure / No response	0	0%
<b>Totals</b>	<b>30</b>	<b>100%</b>

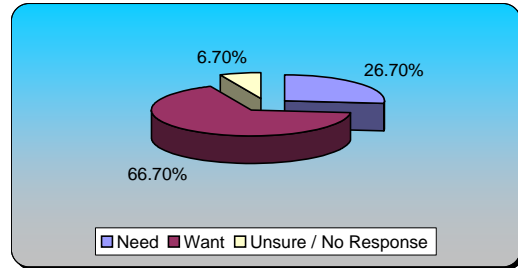


**16.) Public Libraries (multiple choice)**

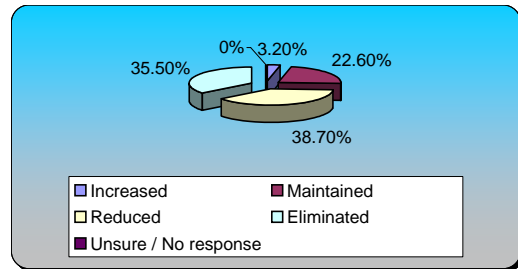
	Responses	
High	5	16.13%
Somewhat High	5	16.13%
Moderate	14	45.16%
Somewhat Low	4	12.90%
Low	3	9.68%
<b>Totals</b>	<b>31</b>	<b>100%</b>



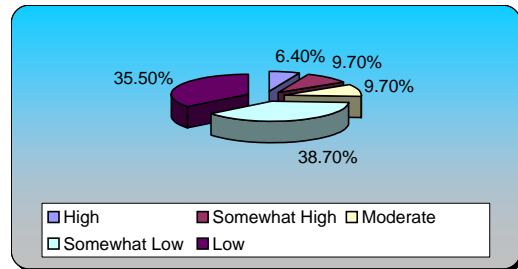
<u>17.) Hampton History Museum (multiple choice)</u>	<u>Responses</u>	
Need	8	26.67%
Want	20	66.67%
Unsure / No Response	2	6.67%
<b>Totals</b>	<b>30</b>	<b>100%</b>



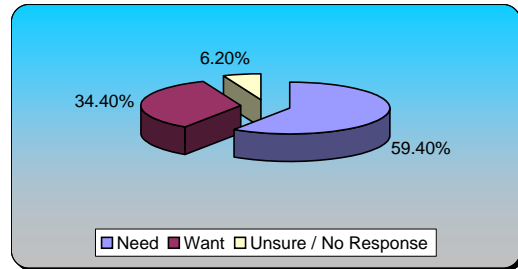
<u>18.) Hampton History Museum (multiple choice)</u>	<u>Responses</u>	
Increased	1	3.23%
Maintained	7	22.58%
Reduced	12	38.71%
Eliminated	11	35.48%
Unsure / No response	0	0%
<b>Totals</b>	<b>31</b>	<b>100%</b>



<u>19.) Hampton History Museum (multiple choice)</u>	<u>Responses</u>	
High	2	6.45%
Somewhat High	3	9.68%
Moderate	3	9.68%
Somewhat Low	12	38.71%
Low	11	35.48%
<b>Totals</b>	<b>31</b>	<b>100%</b>

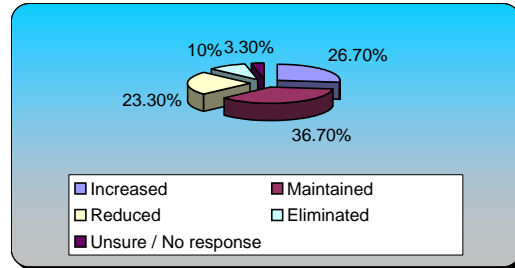


<u>20.) Youth Sports Programs (multiple choice)</u>	<u>Responses</u>	
Need	19	59.38%
Want	11	34.38%
Unsure / No Response	2	6.25%
<b>Totals</b>	<b>32</b>	<b>100%</b>



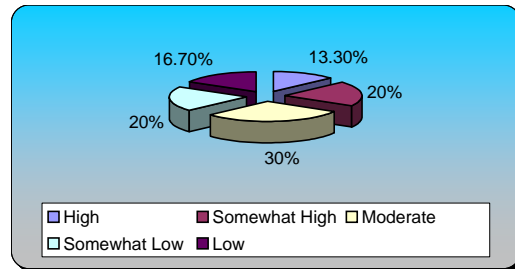
**21.) Youth Sports Programs (multiple choice) Responses**

Increased	8	26.67%
Maintained	11	36.67%
Reduced	7	23.33%
Eliminated	3	10%
Unsure / No response	1	3.33%
<b>Totals</b>	<b>30</b>	<b>100%</b>



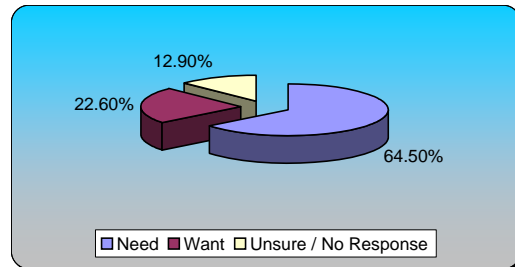
**22.) Youth Sports Programs (multiple choice) Responses**

High	4	13.33%
Somewhat High	6	20%
Moderate	9	30%
Somewhat Low	6	20%
Low	5	16.67%
<b>Totals</b>	<b>30</b>	<b>100%</b>



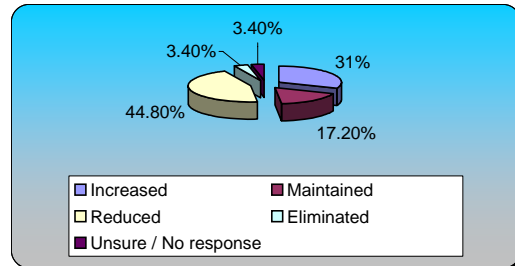
**23.) Master Plan Implementation (multiple choice) Responses**

Need	20	64.52%
Want	7	22.58%
Unsure / No Response	4	12.90%
<b>Totals</b>	<b>31</b>	<b>100%</b>



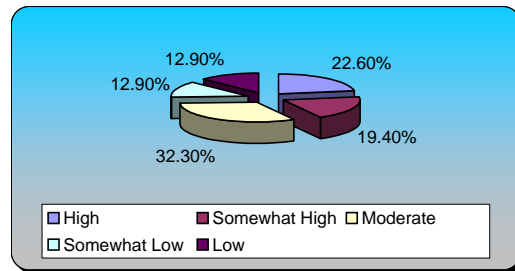
**24.) Master Plan Implementation (multiple choice) Responses**

Increased	9	31.03%
Maintained	5	17.24%
Reduced	13	44.83%
Eliminated	1	3.45%
Unsure / No response	1	3.45%
<b>Totals</b>	<b>29</b>	<b>100%</b>



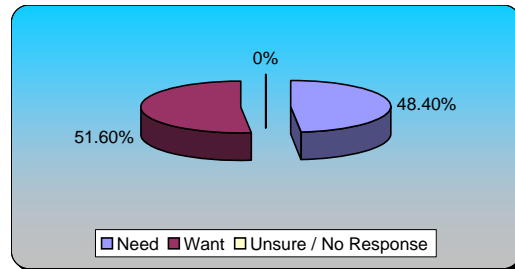
**25.) Master Plan Implementation (multiple choice) Responses**

High	7	22.58%
Somewhat High	6	19.35%
Moderate	10	32.26%
Somewhat Low	4	12.90%
Low	4	12.90%
<b>Totals</b>	<b>31</b>	<b>100%</b>



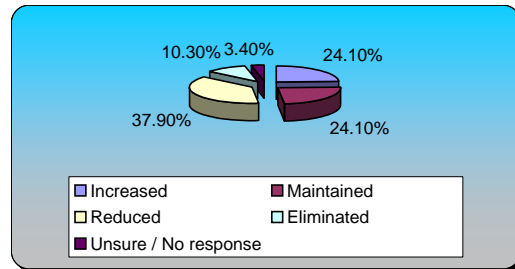
**26.) Attract Tourists & Conventions (multiple choice) Responses**

Need	15	48.39%
Want	16	51.61%
Unsure / No Response	0	0%
<b>Totals</b>	<b>31</b>	<b>100%</b>



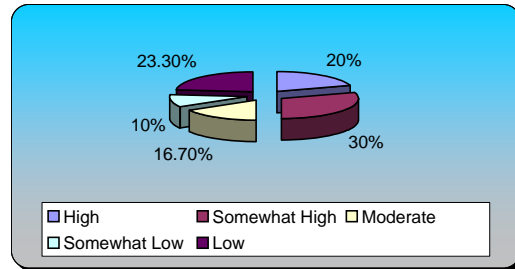
**27.) Attract Tourists & Conventions (multiple choice) Responses**

Increased	7	24.14%
Maintained	7	24.14%
Reduced	11	37.93%
Eliminated	3	10.34%
Unsure / No response	1	3.45%
<b>Totals</b>	<b>29</b>	<b>100%</b>



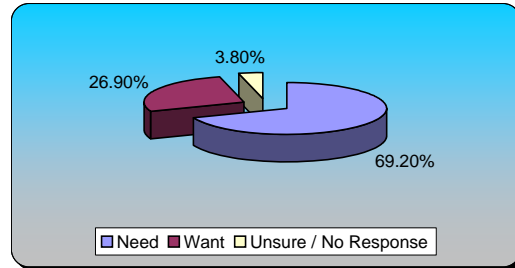
**28.) Attract Tourists & Conventions (multiple choice) Responses**

High	6	20%
Somewhat High	9	30%
Moderate	5	16.67%
Somewhat Low	3	10%
Low	7	23.33%
<b>Totals</b>	<b>30</b>	<b>100%</b>



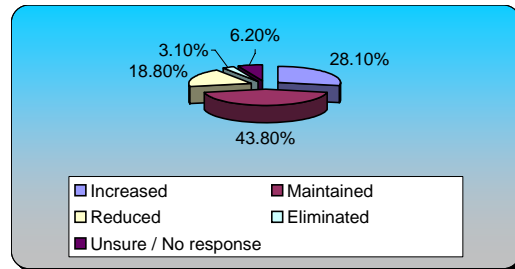
**29.) Retain & Expand Existing Businesses (multiple choice)**

	Responses	
Need	18	69.23%
Want	7	26.92%
Unsure / No Response	1	3.85%
<b>Totals</b>	<b>26</b>	<b>100%</b>



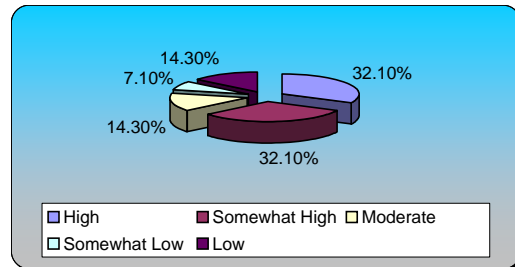
**30.) Retain & Expand Existing Businesses (multiple choice)**

	Responses	
Increased	9	28.12%
Maintained	14	43.75%
Reduced	6	18.75%
Eliminated	1	3.12%
Unsure / No response	2	6.25%
<b>Totals</b>	<b>32</b>	<b>100%</b>



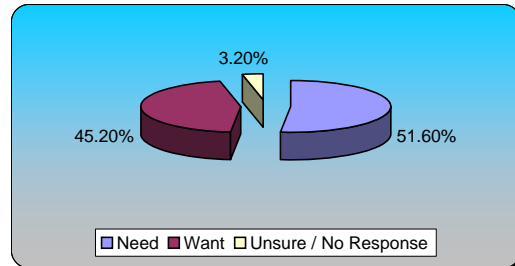
**31.) Retain & Expand Existing Businesses (multiple choice)**

	Responses	
High	9	32.14%
Somewhat High	9	32.14%
Moderate	4	14.29%
Somewhat Low	2	7.14%
Low	4	14.29%
<b>Totals</b>	<b>28</b>	<b>100%</b>



**32.) Attract New Businesses (multiple choice)**

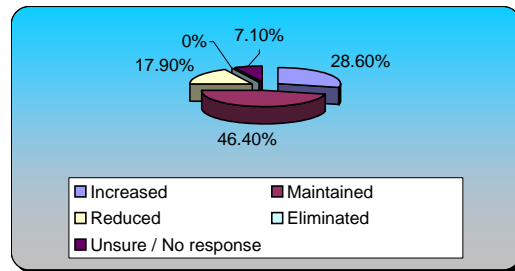
	Responses	
Need	16	51.61%
Want	14	45.16%
Unsure / No Response	1	3.23%
<b>Totals</b>	<b>31</b>	<b>100%</b>





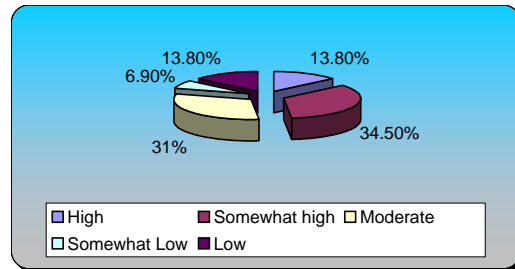
**33.) Attract New Businesses (multiple choice) Responses**

Increased	8	28.57%
Maintained	13	46.43%
Reduced	5	17.86%
Eliminated	0	0%
Unsure / No response	2	7.14%
<b>Totals</b>	<b>28</b>	<b>100%</b>



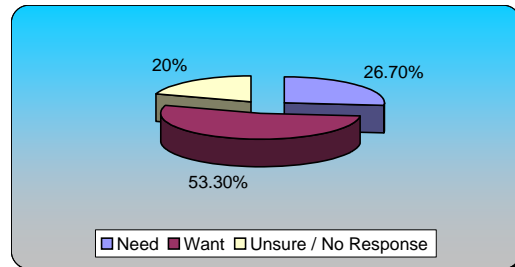
**34.) Attract New Businesses (multiple choice) Responses**

High	4	13.79%
Somewhat high	10	34.48%
Moderate	9	31.03%
Somewhat Low	2	6.90%
Low	4	13.79%
<b>Totals</b>	<b>29</b>	<b>100%</b>



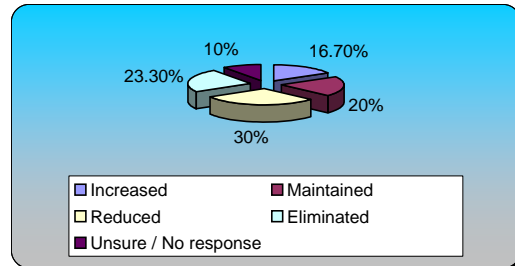
**35.) Encourage Minority Businesses Development (multiple choice) Responses**

Need	8	26.67%
Want	16	53.33%
Unsure / No Response	6	20%
<b>Totals</b>	<b>30</b>	<b>100%</b>



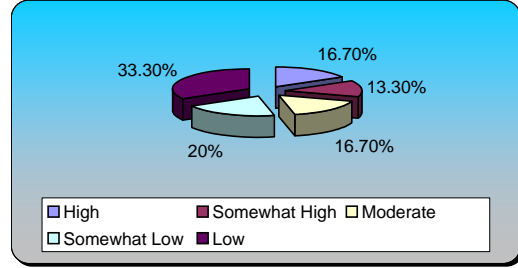
**36.) Encourage Minority Businesses Development (multiple choice) Responses**

Increased	5	16.67%
Maintained	6	20%
Reduced	9	30%
Eliminated	7	23.33%
Unsure / No response	3	10%
<b>Totals</b>	<b>30</b>	<b>100%</b>



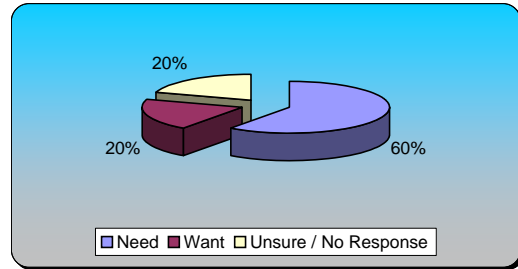
**37.) Encourage Minority Businesses Development (multiple choice)**

	Responses	
High	5	16.67%
Somewhat High	4	13.33%
Moderate	5	16.67%
Somewhat Low	6	20%
Low	10	33.33%
<b>Totals</b>	<b>30</b>	<b>100%</b>



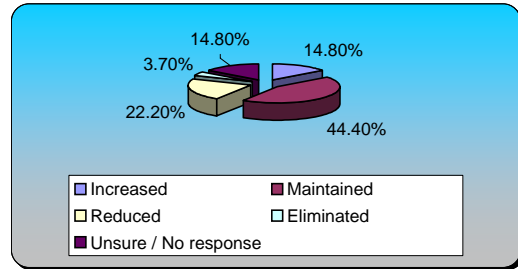
**38.) Remove Blighted Property (multiple choice)**

	Responses	
Need	18	60%
Want	6	20%
Unsure / No Response	6	20%
<b>Totals</b>	<b>30</b>	<b>100%</b>



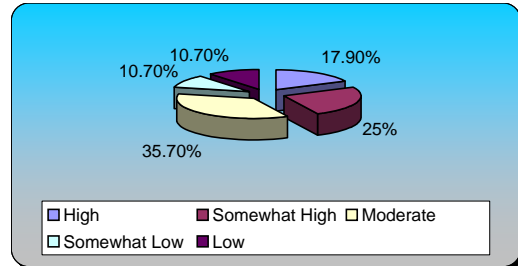
**39.) Remove Blighted Property (multiple choice)**

	Responses	
Increased	4	14.81%
Maintained	12	44.44%
Reduced	6	22.22%
Eliminated	1	3.70%
Unsure / No response	4	14.81%
<b>Totals</b>	<b>27</b>	<b>100%</b>



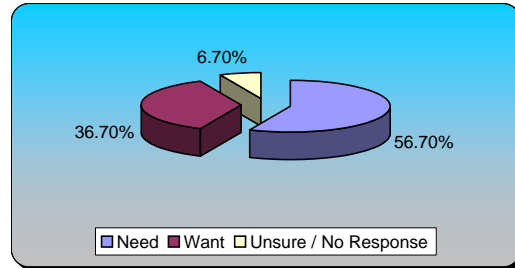
**40.) Remove Blighted Property (multiple choice)**

	Responses	
High	5	17.86%
Somewhat High	7	25%
Moderate	10	35.71%
Somewhat Low	3	10.71%
Low	3	10.71%
<b>Totals</b>	<b>28</b>	<b>100%</b>



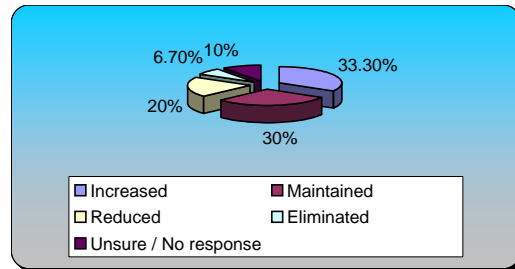
**41.) Improve Drainage for Heavy Rains (multiple choice)**

	Responses	
Need	17	56.67%
Want	11	36.67%
Unsure / No Response	2	6.67%
<b>Totals</b>	<b>30</b>	<b>100%</b>



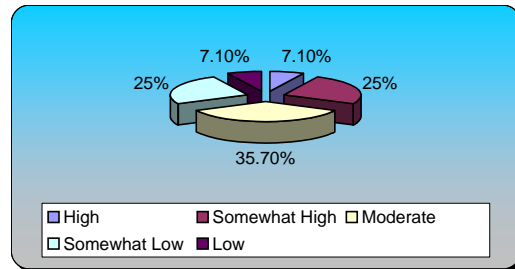
**42.) Improve Drainage for Heavy Rains (multiple choice)**

	Responses	
Increased	10	33.33%
Maintained	9	30%
Reduced	6	20%
Eliminated	2	6.67%
Unsure / No response	3	10%
<b>Totals</b>	<b>30</b>	<b>100%</b>



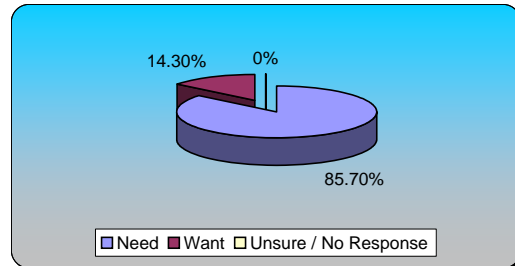
**43.) Improve Drainage for Heavy Rains (multiple choice)**

	Responses	
High	2	7.14%
Somewhat High	7	25%
Moderate	10	35.71%
Somewhat Low	7	25%
Low	2	7.14%
<b>Totals</b>	<b>28</b>	<b>100%</b>



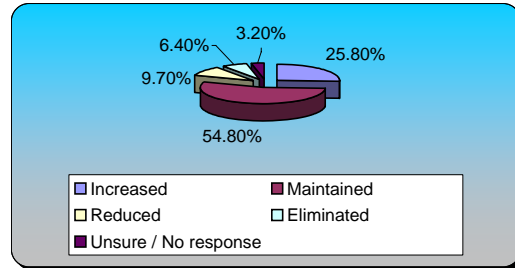
**44.) Maintain Streets, Roads, & Bridges (multiple choice)**

	Responses	
Need	24	85.71%
Want	4	14.29%
Unsure / No Response	0	0%
<b>Totals</b>	<b>28</b>	<b>100%</b>



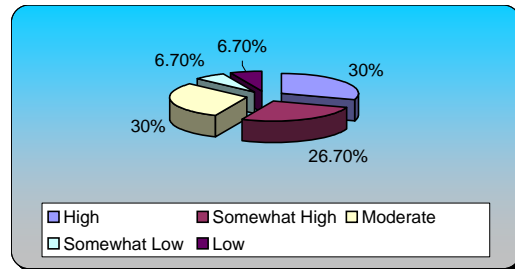
**45.) Maintain Streets, Roads, & Bridges (multiple choice)**

	Responses	
Increased	8	25.81%
Maintained	17	54.84%
Reduced	3	9.68%
Eliminated	2	6.45%
Unsure / No response	1	3.23%
<b>Totals</b>	<b>31</b>	<b>100%</b>



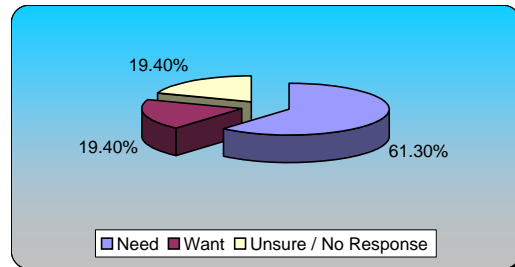
**46.) Maintain Streets, Roads, & Bridges (multiple choice)**

	Responses	
High	9	30%
Somewhat High	8	26.67%
Moderate	9	30%
Somewhat Low	2	6.67%
Low	2	6.67%
<b>Totals</b>	<b>30</b>	<b>100%</b>



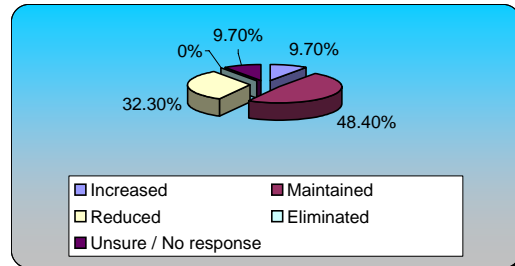
**47.) Maintain Traffic Signals (multiple choice)**

	Responses	
Need	19	61.29%
Want	6	19.35%
Unsure / No Response	6	19.35%
<b>Totals</b>	<b>31</b>	<b>100%</b>



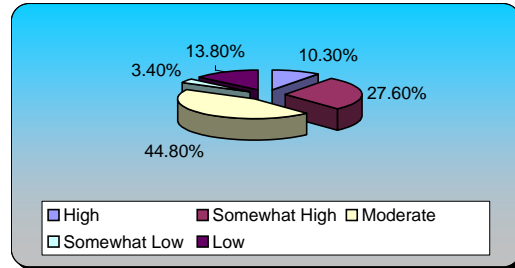
**48.) Maintain Traffic Signals (multiple choice)**

	Responses	
Increased	3	9.68%
Maintained	15	48.39%
Reduced	10	32.26%
Eliminated	0	0%
Unsure / No response	3	9.68%
<b>Totals</b>	<b>31</b>	<b>100%</b>



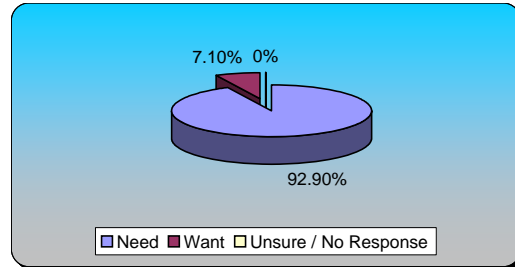
**49.) Maintain Traffic Signals (multiple choice) Responses**

High	3	10.34%
Somewhat High	8	27.59%
Moderate	13	44.83%
Somewhat Low	1	3.45%
Low	4	13.79%
<b>Totals</b>	<b>29</b>	<b>100%</b>



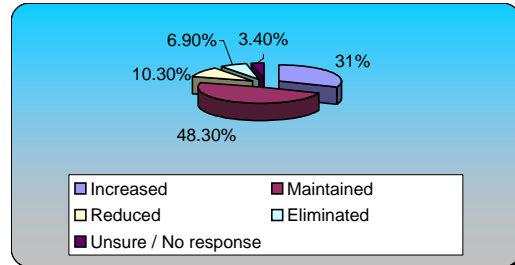
**50.) Maintain City Street Lighting (multiple choice) Responses**

Need	26	92.86%
Want	2	7.14%
Unsure / No Response	0	0%
<b>Totals</b>	<b>28</b>	<b>100%</b>



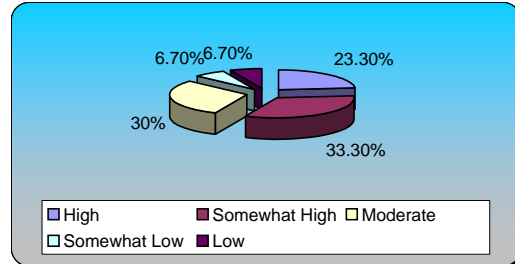
**51.) Maintain City Street Lighting (multiple choice) Responses**

Increased	9	31.03%
Maintained	14	48.28%
Reduced	3	10.34%
Eliminated	2	6.90%
Unsure / No response	1	3.45%
<b>Totals</b>	<b>29</b>	<b>100%</b>

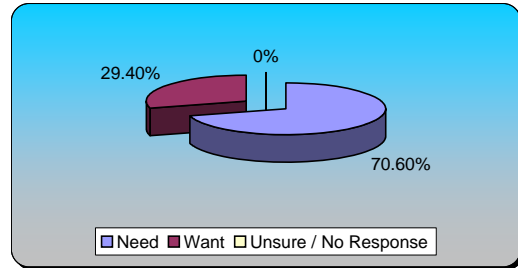


**52.) Maintain City Street Lighting (multiple choice) Responses**

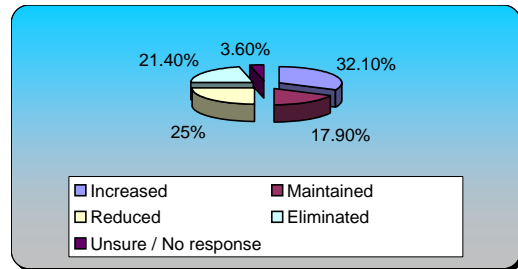
High	7	23.33%
Somewhat High	10	33.33%
Moderate	9	30%
Somewhat Low	2	6.67%
Low	2	6.67%
<b>Totals</b>	<b>30</b>	<b>100%</b>



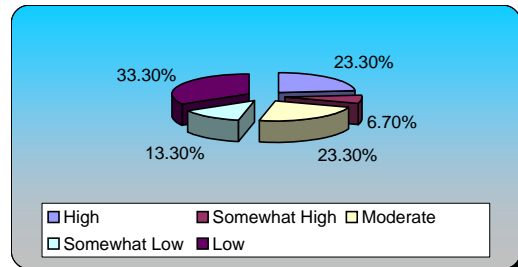
53.) Insect & Mosquito Control (multiple choice)	Responses	
Need	24	70.59%
Want	10	29.41%
Unsure / No Response	0	0%
<b>Totals</b>	<b>34</b>	<b>100%</b>



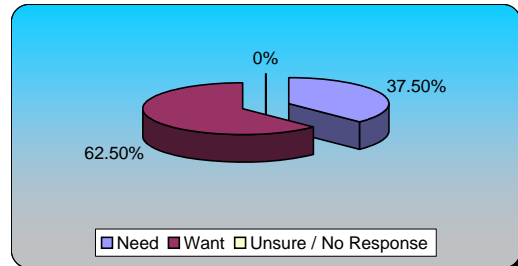
54.) Insect & Mosquito Control (multiple choice)	Responses	
Increased	9	32.14%
Maintained	5	17.86%
Reduced	7	25%
Eliminated	6	21.43%
Unsure / No response	1	3.57%
<b>Totals</b>	<b>28</b>	<b>100%</b>



55.) Insect & Mosquito Control (multiple choice)	Responses	
High	7	23.33%
Somewhat High	2	6.67%
Moderate	7	23.33%
Somewhat Low	4	13.33%
Low	10	33.33%
<b>Totals</b>	<b>30</b>	<b>100%</b>

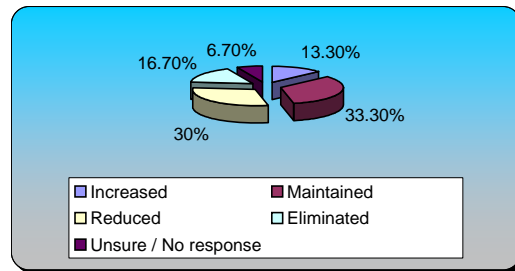


56.) Maintain Parks & Playgrounds (multiple choice)	Responses	
Need	12	37.50%
Want	20	62.50%
Unsure / No Response	0	0%
<b>Totals</b>	<b>32</b>	<b>100%</b>



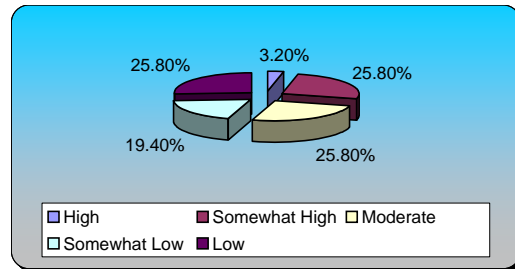
**57.) Maintain Parks & Playgrounds (multiple choice) Responses**

Increased	4	13.33%
Maintained	10	33.33%
Reduced	9	30%
Eliminated	5	16.67%
Unsure / No response	2	6.67%
<b>Totals</b>	<b>30</b>	<b>100%</b>



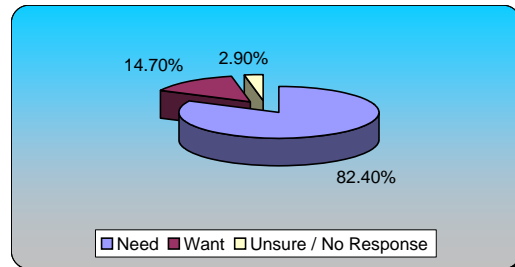
**58.) Maintain Parks & Playgrounds (multiple choice) Responses**

High	1	3.23%
Somewhat High	8	25.81%
Moderate	8	25.81%
Somewhat Low	6	19.35%
Low	8	25.81%
<b>Totals</b>	<b>31</b>	<b>100%</b>



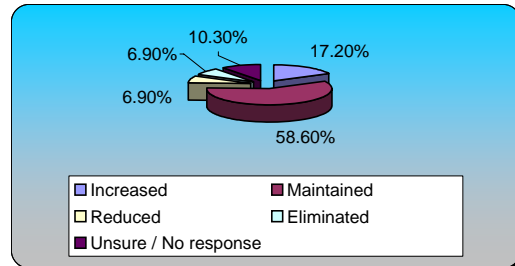
**59.) Upkeep of Public Facilities (multiple choice) Responses**

Need	28	82.35%
Want	5	14.71%
Unsure / No Response	1	2.94%
<b>Totals</b>	<b>34</b>	<b>100%</b>



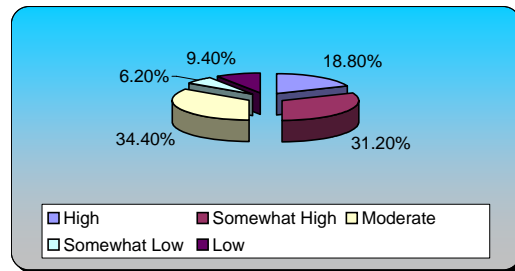
**60.) Upkeep of Public Facilities (multiple choice) Responses**

Increased	5	17.24%
Maintained	17	58.62%
Reduced	2	6.90%
Eliminated	2	6.90%
Unsure / No response	3	10.34%
<b>Totals</b>	<b>29</b>	<b>100%</b>



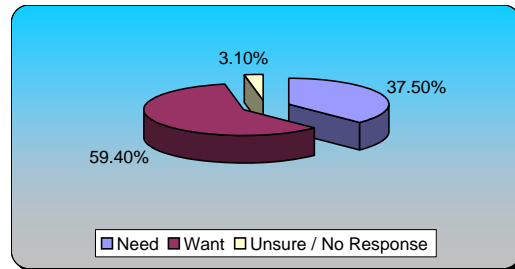
**61.) Upkeep of Public Facilities (multiple choice) Responses**

High	6	18.75%
Somewhat High	10	31.25%
Moderate	11	34.38%
Somewhat Low	2	6.25%
Low	3	9.38%
<b>Totals</b>	<b>32</b>	<b>100%</b>



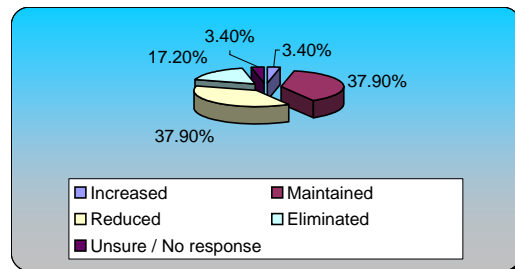
**62.) Maintain Medians (multiple choice) Responses**

Need	12	37.50%
Want	19	59.38%
Unsure / No Response	1	3.12%
<b>Totals</b>	<b>32</b>	<b>100%</b>



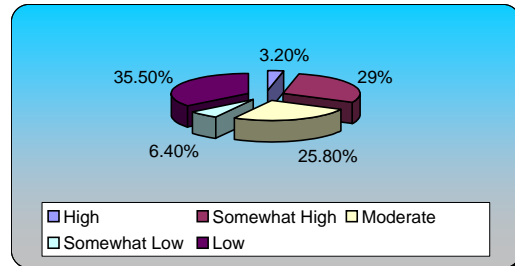
**63.) Maintain Medians (multiple choice) Responses**

Increased	1	3.45%
Maintained	11	37.93%
Reduced	11	37.93%
Eliminated	5	17.24%
Unsure / No response	1	3.45%
<b>Totals</b>	<b>29</b>	<b>100%</b>



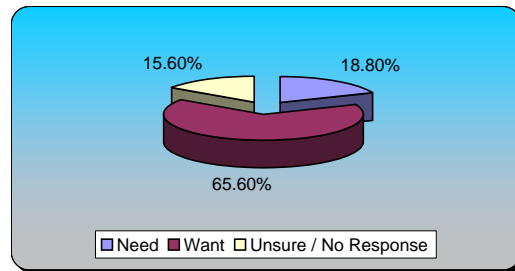
**64.) Maintain Medians (multiple choice) Responses**

High	1	3.23%
Somewhat High	9	29.03%
Moderate	8	25.81%
Somewhat Low	2	6.45%
Low	11	35.48%
<b>Totals</b>	<b>31</b>	<b>100%</b>

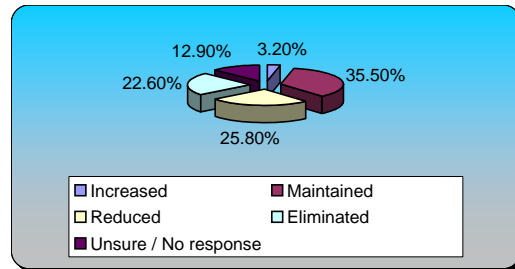




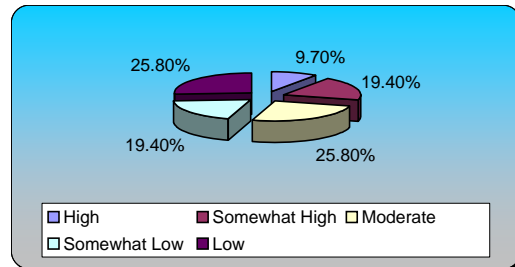
<b>65.) Enhance Landscaping (multiple choice)</b>	<b>Responses</b>	
Need	6	18.75%
Want	21	65.62%
Unsure / No Response	5	15.62%
<b>Totals</b>	<b>32</b>	<b>100%</b>



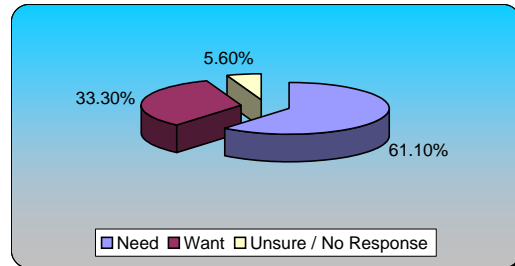
<b>66.) Enhance Landscaping (multiple choice)</b>	<b>Responses</b>	
Increased	1	3.23%
Maintained	11	35.48%
Reduced	8	25.81%
Eliminated	7	22.58%
Unsure / No response	4	12.90%
<b>Totals</b>	<b>31</b>	<b>100%</b>



<b>67.) Enhance Landscaping (multiple choice)</b>	<b>Responses</b>	
High	3	9.68%
Somewhat High	6	19.35%
Moderate	8	25.81%
Somewhat Low	6	19.35%
Low	8	25.81%
<b>Totals</b>	<b>31</b>	<b>100%</b>

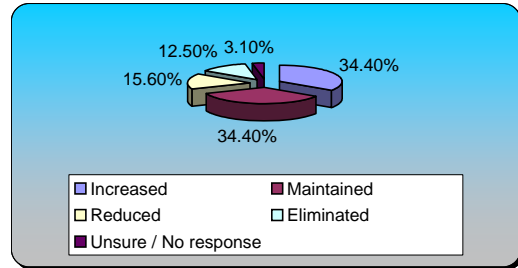


<b>68.) Maintain Athletic Fields (multiple choice)</b>	<b>Responses</b>	
Need	22	61.11%
Want	12	33.33%
Unsure / No Response	2	5.56%
<b>Totals</b>	<b>36</b>	<b>100%</b>



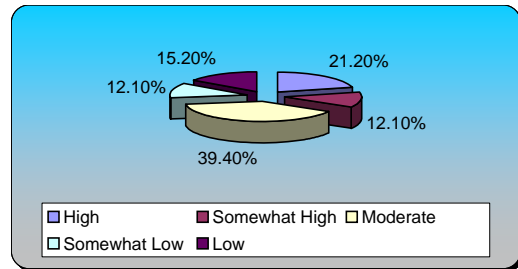
**69.) Maintain Athletic Fields (multiple choice) Responses**

Increased	11	34.38%
Maintained	11	34.38%
Reduced	5	15.62%
Eliminated	4	12.50%
Unsure / No response	1	3.12%
<b>Totals</b>	<b>32</b>	<b>100%</b>



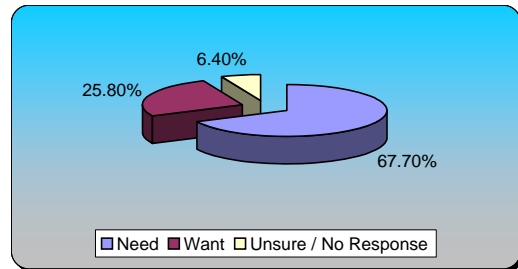
**70.) Maintain Athletic Fields (multiple choice) Responses**

High	7	21.21%
Somewhat High	4	12.12%
Moderate	13	39.39%
Somewhat Low	4	12.12%
Low	5	15.15%
<b>Totals</b>	<b>33</b>	<b>100%</b>



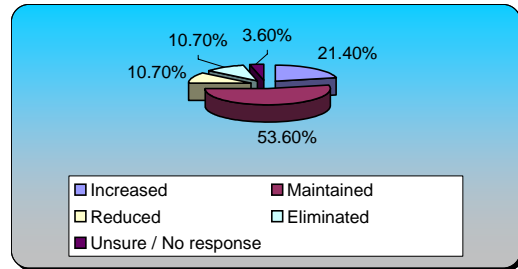
**71.) Building Inspections (multiple choice) Responses**

Need	21	67.74%
Want	8	25.81%
Unsure / No Response	2	6.45%
<b>Totals</b>	<b>31</b>	<b>100%</b>



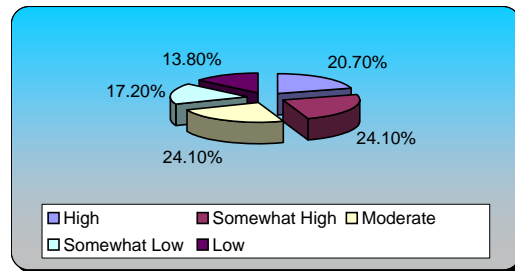
**72.) Building Inspections (multiple choice) Responses**

Increased	6	21.43%
Maintained	15	53.57%
Reduced	3	10.71%
Eliminated	3	10.71%
Unsure / No response	1	3.57%
<b>Totals</b>	<b>28</b>	<b>100%</b>



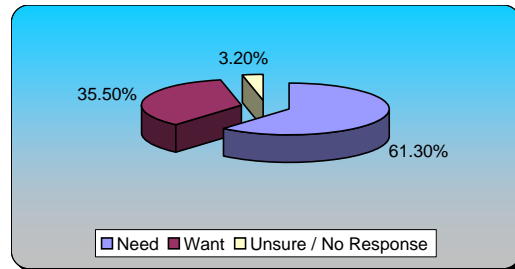
**73.) Building Inspections (multiple choice) Responses**

High	6	20.69%
Somewhat High	7	24.14%
Moderate	7	24.14%
Somewhat Low	5	17.24%
Low	4	13.79%
<b>Totals</b>	<b>29</b>	<b>100%</b>



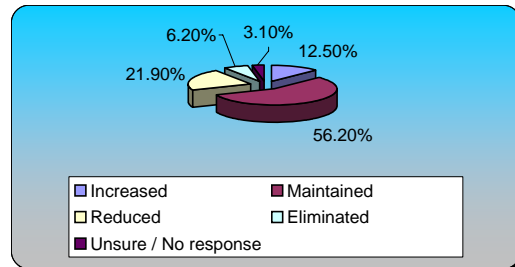
**74.) Strategic Community Planning (multiple choice) Responses**

Need	19	61.29%
Want	11	35.48%
Unsure / No Response	1	3.23%
<b>Totals</b>	<b>31</b>	<b>100%</b>



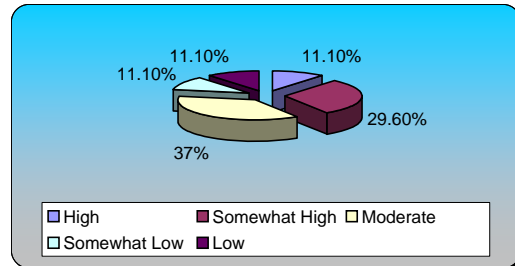
**75.) Strategic Community Planning (multiple choice) Responses**

Increased	4	12.50%
Maintained	18	56.25%
Reduced	7	21.88%
Eliminated	2	6.25%
Unsure / No response	1	3.12%
<b>Totals</b>	<b>32</b>	<b>100%</b>



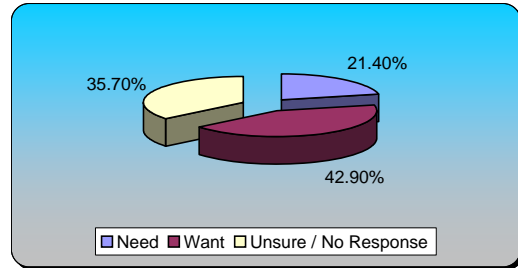
**76.) Strategic Community Planning (multiple choice) Responses**

High	3	11.11%
Somewhat High	8	29.63%
Moderate	10	37.04%
Somewhat Low	3	11.11%
Low	3	11.11%
<b>Totals</b>	<b>27</b>	<b>100%</b>



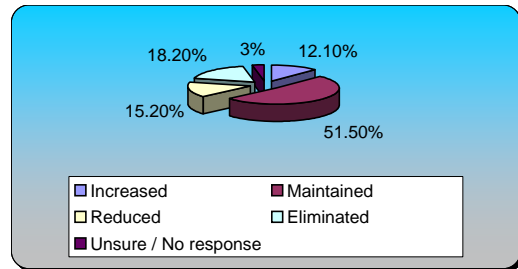
**77.) Enforcing Zoning Ordinances (multiple choice) Responses**

Need	6	21.43%
Want	12	42.86%
Unsure / No Response	10	35.71%
<b>Totals</b>	<b>28</b>	<b>100%</b>



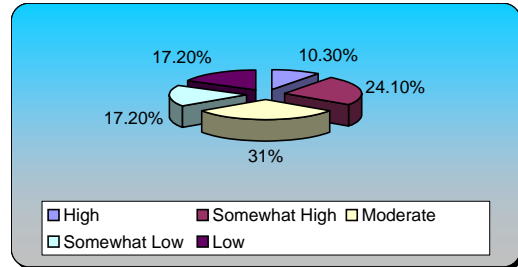
**78.) Enforcing Zoning Ordinances (multiple choice) Responses**

Increased	4	12.12%
Maintained	17	51.52%
Reduced	5	15.15%
Eliminated	6	18.18%
Unsure / No response	1	3.03%
<b>Totals</b>	<b>33</b>	<b>100%</b>



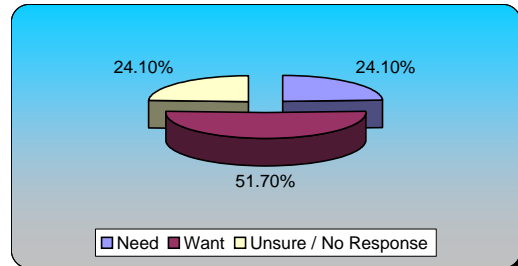
**79.) Enforcing Zoning Ordinances (multiple choice) Responses**

High	3	10.34%
Somewhat High	7	24.14%
Moderate	9	31.03%
Somewhat Low	5	17.24%
Low	5	17.24%
<b>Totals</b>	<b>29</b>	<b>100%</b>



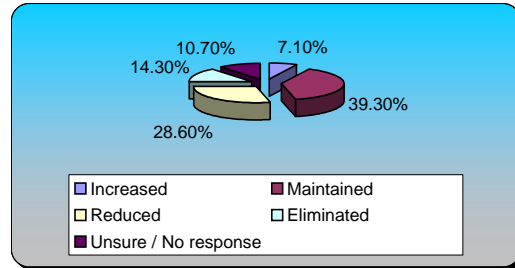
**80.) Building & Land Use Plan Review (multiple choice) Responses**

Need	7	24.14%
Want	15	51.72%
Unsure / No Response	7	24.14%
<b>Totals</b>	<b>29</b>	<b>100%</b>



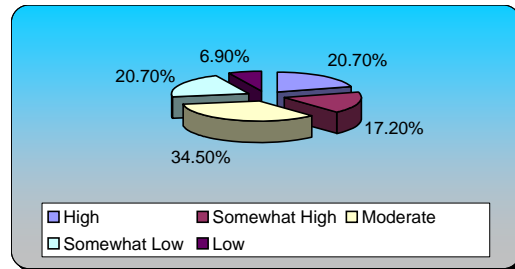
**81.) Building & Land Use Plan Review (multiple choice)**

	Responses	
Increased	2	7.14%
Maintained	11	39.29%
Reduced	8	28.57%
Eliminated	4	14.29%
Unsure / No response	3	10.71%
<b>Totals</b>	<b>28</b>	<b>100%</b>



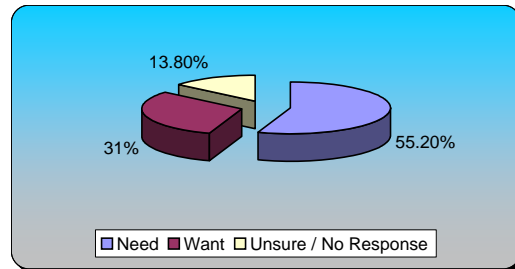
**82.) Building & Land Use Plan Review (multiple choice)**

	Responses	
High	6	20.69%
Somewhat High	5	17.24%
Moderate	10	34.48%
Somewhat Low	6	20.69%
Low	2	6.90%
<b>Totals</b>	<b>29</b>	<b>100%</b>



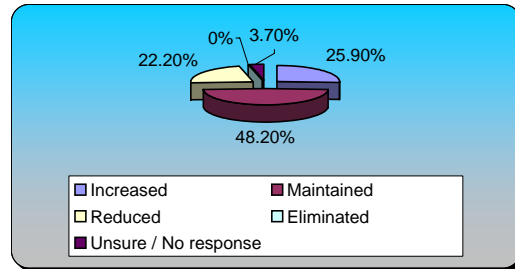
**83.) Services to Support Neighborhoods (multiple choice)**

	Responses	
Need	16	55.17%
Want	9	31.03%
Unsure / No Response	4	13.79%
<b>Totals</b>	<b>29</b>	<b>100%</b>



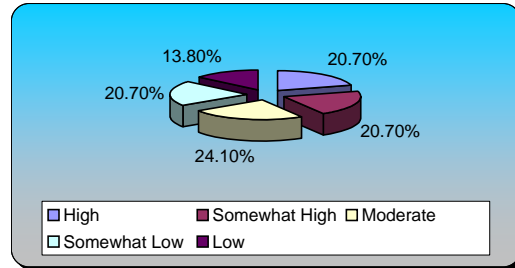
**84.) Services to Support Neighborhoods (multiple choice)**

	Responses	
Increased	7	25.93%
Maintained	13	48.15%
Reduced	6	22.22%
Eliminated	0	0%
Unsure / No response	1	3.70%
<b>Totals</b>	<b>27</b>	<b>100%</b>



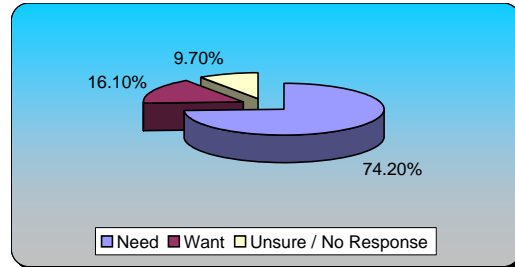
**85.) Services to Support Neighborhoods (multiple choice)**

	Responses	
High	6	20.69%
Somewhat High	6	20.69%
Moderate	7	24.14%
Somewhat Low	6	20.69%
Low	4	13.79%
<b>Totals</b>	<b>29</b>	<b>100%</b>



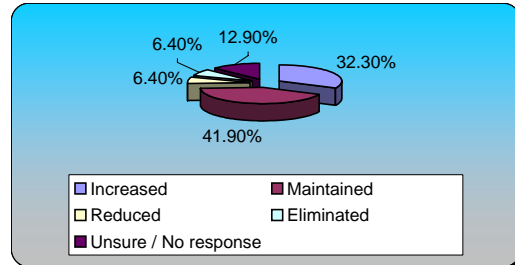
**86.) Foster Civic Engagement Opportunities (multiple choice)**

	Responses	
Need	23	74.19%
Want	5	16.13%
Unsure / No Response	3	9.68%
<b>Totals</b>	<b>31</b>	<b>100%</b>



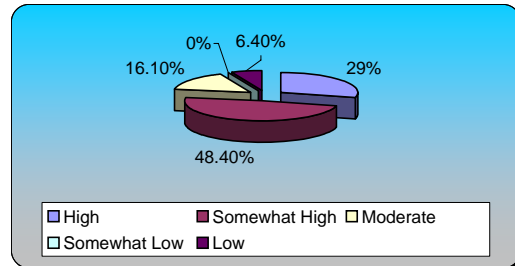
**87.) Foster Civic Engagement Opportunities (multiple choice)**

	Responses	
Increased	10	32.26%
Maintained	13	41.94%
Reduced	2	6.45%
Eliminated	2	6.45%
Unsure / No response	4	12.90%
<b>Totals</b>	<b>31</b>	<b>100%</b>



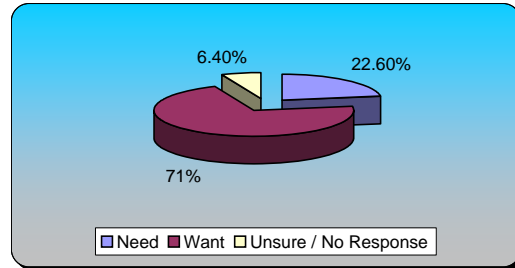
**88.) Fostering Civic Engagement Opportunities (multiple choice)**

	Responses	
High	9	29.03%
Somewhat High	15	48.39%
Moderate	5	16.13%
Somewhat Low	0	0%
Low	2	6.45%
<b>Totals</b>	<b>31</b>	<b>100%</b>



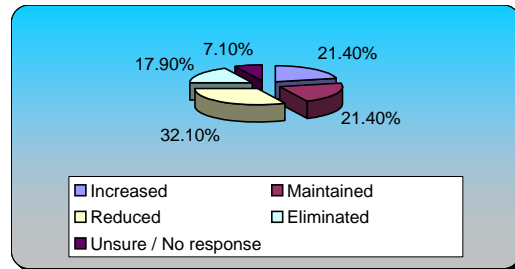
**89.) Improving Image of Neighborhoods (multiple choice)**

	Responses	
Need	7	22.58%
Want	22	70.97%
Unsure / No Response	2	6.45%
<b>Totals</b>	<b>31</b>	<b>100%</b>



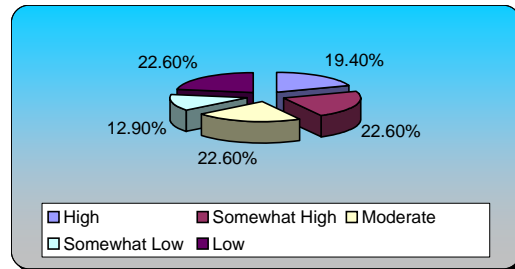
**90.) Improving Image of Neighborhoods (multiple choice)**

	Responses	
Increased	6	21.43%
Maintained	6	21.43%
Reduced	9	32.14%
Eliminated	5	17.86%
Unsure / No response	2	7.14%
<b>Totals</b>	<b>28</b>	<b>100%</b>



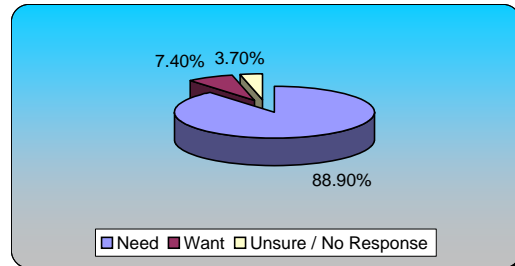
**91.) Improving Image of Neighborhoods (multiple choice)**

	Responses	
High	6	19.35%
Somewhat High	7	22.58%
Moderate	7	22.58%
Somewhat Low	4	12.90%
Low	7	22.58%
<b>Totals</b>	<b>31</b>	<b>100%</b>



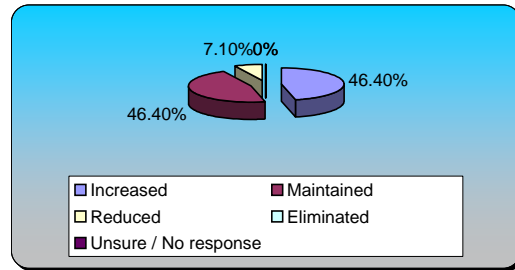
**92.) E911 - Dispatch (multiple choice)**

	Responses	
Need	24	88.89%
Want	2	7.41%
Unsure / No Response	1	3.70%
<b>Totals</b>	<b>27</b>	<b>100%</b>



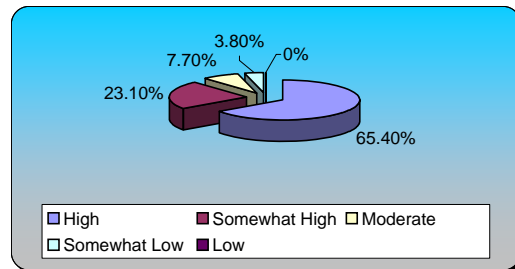
**93.) E911 - Dispatch (multiple choice) Responses**

Increased	13	46.43%
Maintained	13	46.43%
Reduced	2	7.14%
Eliminated	0	0%
Unsure / No response	0	0%
<b>Totals</b>	<b>28</b>	<b>100%</b>



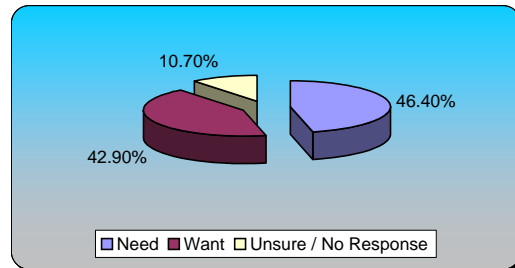
**94.) E911 - Dispatch (multiple choice) Responses**

High	17	65.38%
Somewhat High	6	23.08%
Moderate	2	7.69%
Somewhat Low	1	3.85%
Low	0	0%
<b>Totals</b>	<b>26</b>	<b>100%</b>



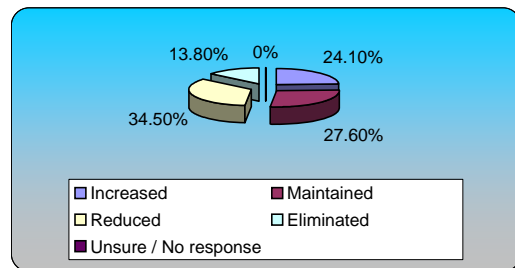
**95.) Uniform Patrol (multiple choice) Responses**

Need	13	46.43%
Want	12	42.86%
Unsure / No Response	3	10.71%
<b>Totals</b>	<b>28</b>	<b>100%</b>



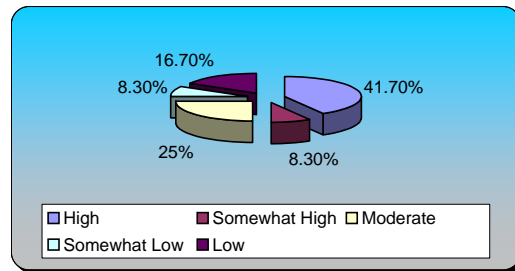
**96.) Uniform Patrol (multiple choice) Responses**

Increased	7	24.14%
Maintained	8	27.59%
Reduced	10	34.48%
Eliminated	4	13.79%
Unsure / No response	0	0%
<b>Totals</b>	<b>29</b>	<b>100%</b>

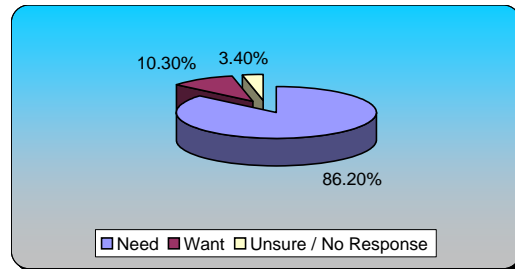




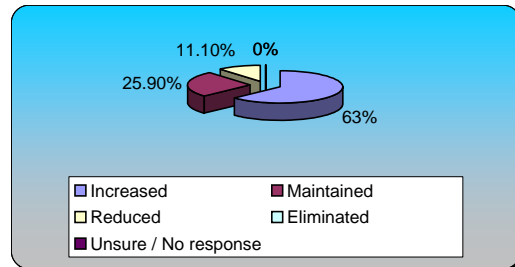
97.) Uniform Patrol (multiple choice)	Responses	
High	10	41.67%
Somewhat High	2	8.33%
Moderate	6	25%
Somewhat Low	2	8.33%
Low	4	16.67%
<b>Totals</b>	<b>24</b>	<b>100%</b>



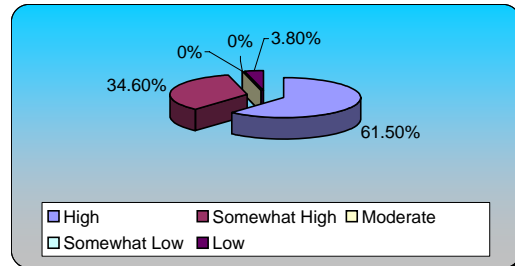
98.) Crime Investigation (multiple choice)	Responses	
Need	25	86.21%
Want	3	10.34%
Unsure / No Response	1	3.45%
<b>Totals</b>	<b>29</b>	<b>100%</b>



99.) Crime Investigation (multiple choice)	Responses	
Increased	17	62.96%
Maintained	7	25.93%
Reduced	3	11.11%
Eliminated	0	0%
Unsure / No response	0	0%
<b>Totals</b>	<b>27</b>	<b>100%</b>

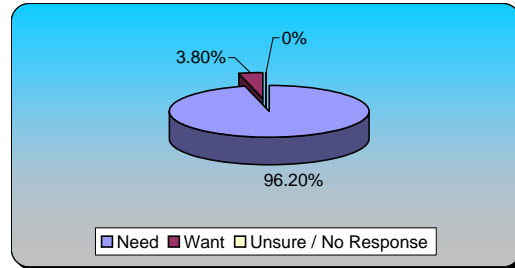


100.) Crime Investigation (multiple choice)	Responses	
High	16	61.54%
Somewhat High	9	34.62%
Moderate	0	0%
Somewhat Low	0	0%
Low	1	3.85%
<b>Totals</b>	<b>26</b>	<b>100%</b>



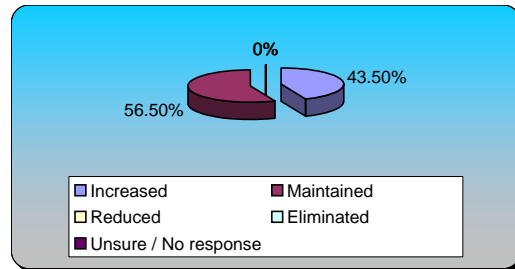
**101.) Emergency Medical & Fire Response (multiple choice)**

	Responses	
Need	25	96.15%
Want	1	3.85%
Unsure / No Response	0	0%
<b>Totals</b>	<b>26</b>	<b>100%</b>



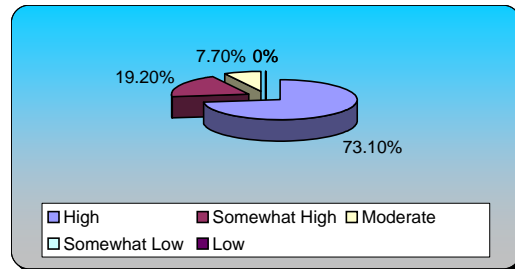
**102.) Emergency Medical & Fire Response (multiple choice)**

	Responses	
Increased	10	43.48%
Maintained	13	56.52%
Reduced	0	0%
Eliminated	0	0%
Unsure / No response	0	0%
<b>Totals</b>	<b>23</b>	<b>100%</b>



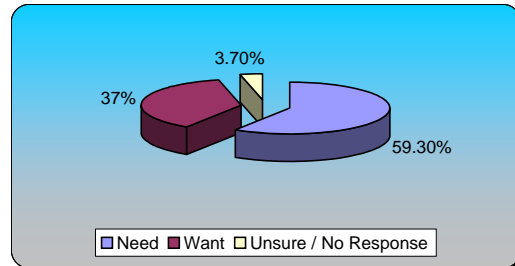
**103.) Emergency Medical & Fire Response (multiple choice)**

	Responses	
High	19	73.08%
Somewhat High	5	19.23%
Moderate	2	7.69%
Somewhat Low	0	0%
Low	0	0%
<b>Totals</b>	<b>26</b>	<b>100%</b>



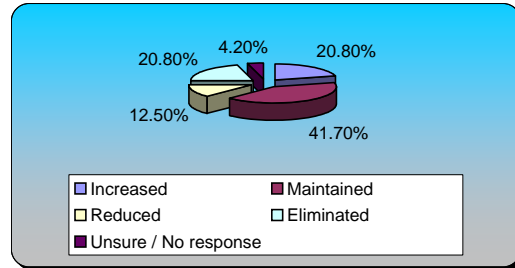
**104.) Financial Support for Volunteer Firefighters (multiple choice)**

	Responses	
Need	16	59.26%
Want	10	37.04%
Unsure / No Response	1	3.70%
<b>Totals</b>	<b>27</b>	<b>100%</b>



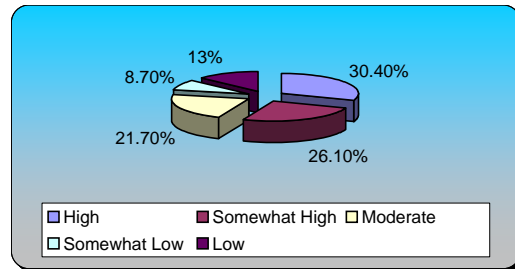
**105.) Financial Support for Volunteer Firefighters  
(multiple choice)**

	Responses	
Increased	5	20.83%
Maintained	10	41.67%
Reduced	3	12.50%
Eliminated	5	20.83%
Unsure / No response	1	4.17%
<b>Totals</b>	<b>24</b>	<b>100%</b>



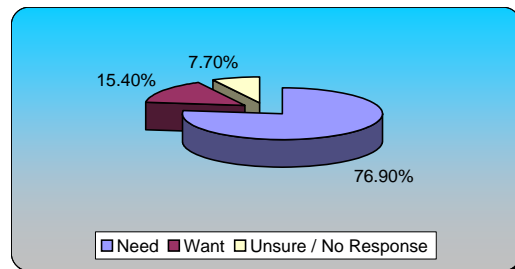
**106.) Financial Support for Volunteer Firefighters  
(multiple choice)**

	Responses	
High	7	30.43%
Somewhat High	6	26.09%
Moderate	5	21.74%
Somewhat Low	2	8.70%
Low	3	13.04%
<b>Totals</b>	<b>23</b>	<b>100%</b>



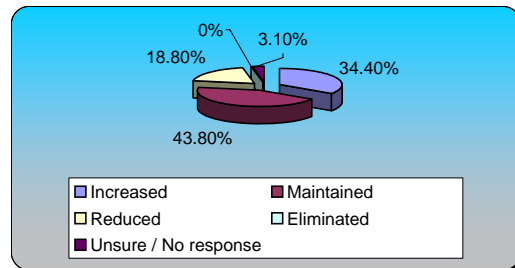
**107.) Disaster Preparedness & Management  
(multiple choice)**

	Responses	
Need	20	76.92%
Want	4	15.38%
Unsure / No Response	2	7.69%
<b>Totals</b>	<b>26</b>	<b>100%</b>



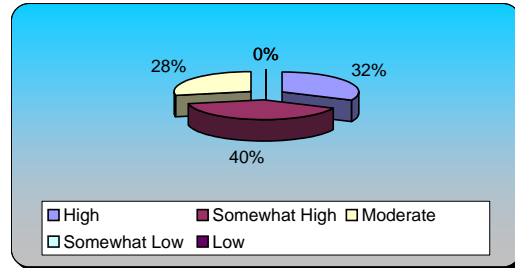
**108.) Disaster Preparedness & Management  
(multiple choice)**

	Responses	
Increased	11	34.38%
Maintained	14	43.75%
Reduced	6	18.75%
Eliminated	0	0%
Unsure / No response	1	3.12%
<b>Totals</b>	<b>32</b>	<b>100%</b>



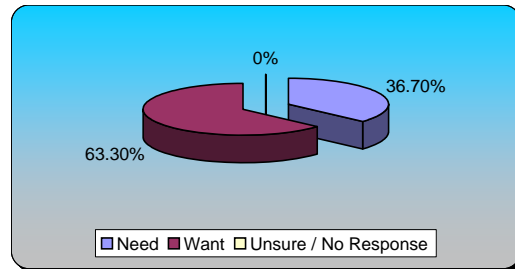
**109.) Disaster Preparedness & Management (multiple choice)**

	Responses	
High	8	32%
Somewhat High	10	40%
Moderate	7	28%
Somewhat Low	0	0%
Low	0	0%
<b>Totals</b>	<b>25</b>	<b>100%</b>



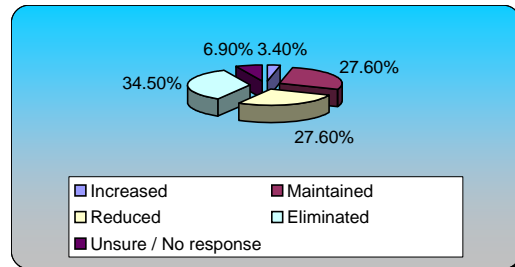
**110.) Animal Control Services (multiple choice)**

	Responses	
Need	11	36.67%
Want	19	63.33%
Unsure / No Response	0	0%
<b>Totals</b>	<b>30</b>	<b>100%</b>



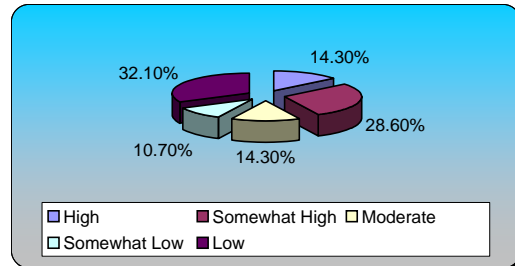
**111.) Animal Control Services (multiple choice)**

	Responses	
Increased	1	3.45%
Maintained	8	27.59%
Reduced	8	27.59%
Eliminated	10	34.48%
Unsure / No response	2	6.90%
<b>Totals</b>	<b>29</b>	<b>100%</b>



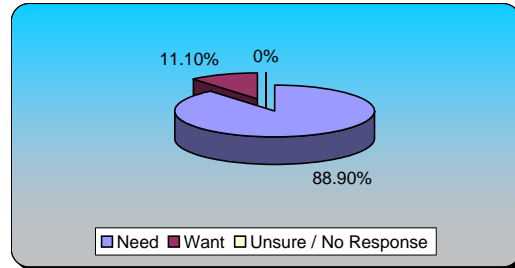
**112.) Animal Control Services (multiple choice)**

	Responses	
High	4	14.29%
Somewhat High	8	28.57%
Moderate	4	14.29%
Somewhat Low	3	10.71%
Low	9	32.14%
<b>Totals</b>	<b>28</b>	<b>100%</b>



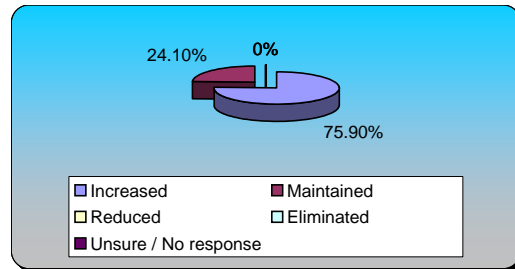
**113.) Public Schools for Grades K thru 12 (multiple choice)**

	Responses	
Need	24	88.89%
Want	3	11.11%
Unsure / No Response	0	0%
<b>Totals</b>	<b>27</b>	<b>100%</b>



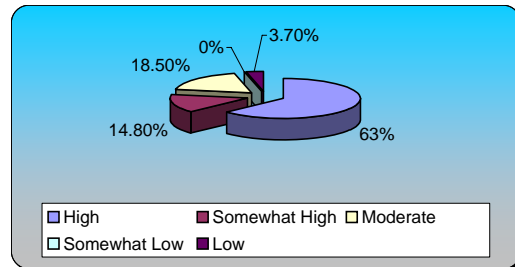
**114.) Public Schools for Grades K thru 12 (multiple choice)**

	Responses	
Increased	22	75.86%
Maintained	7	24.14%
Reduced	0	0%
Eliminated	0	0%
Unsure / No response	0	0%
<b>Totals</b>	<b>29</b>	<b>100%</b>



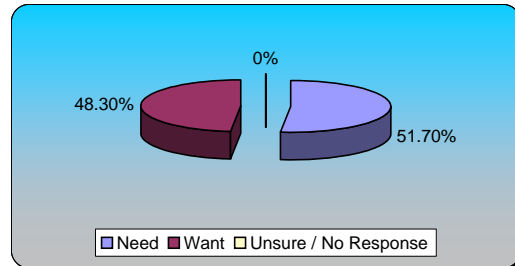
**115.) Public Schools for Grades K thru 12 (multiple choice)**

	Responses	
High	17	62.96%
Somewhat High	4	14.81%
Moderate	5	18.52%
Somewhat Low	0	0%
Low	1	3.70%
<b>Totals</b>	<b>27</b>	<b>100%</b>



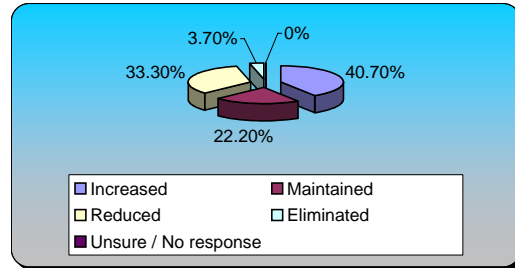
**116.) Maintain School Grounds (multiple choice)**

	Responses	
Need	15	51.72%
Want	14	48.28%
Unsure / No Response	0	0%
<b>Totals</b>	<b>29</b>	<b>100%</b>



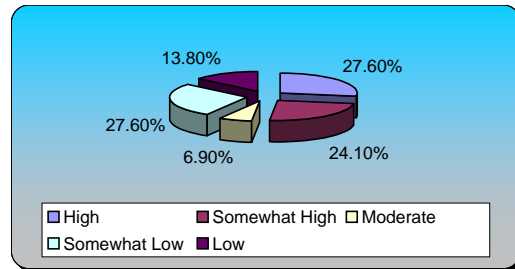
**117.) Maintain School Grounds (multiple choice) Responses**

Increased	11	40.74%
Maintained	6	22.22%
Reduced	9	33.33%
Eliminated	1	3.70%
Unsure / No response	0	0%
<b>Totals</b>	<b>27</b>	<b>100%</b>



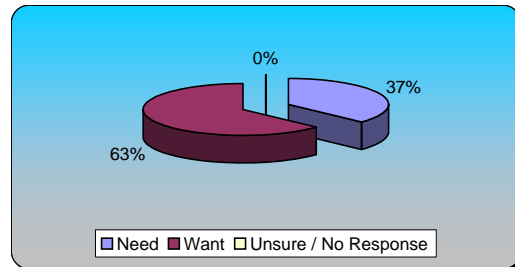
**118.) Maintain School Grounds (multiple choice) Responses**

High	8	27.59%
Somewhat High	7	24.14%
Moderate	2	6.90%
Somewhat Low	8	27.59%
Low	4	13.79%
<b>Totals</b>	<b>29</b>	<b>100%</b>



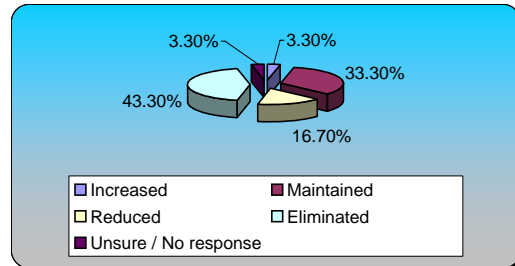
**119.) School Crossing Guards (multiple choice) Responses**

Need	10	37.04%
Want	17	62.96%
Unsure / No Response	0	0%
<b>Totals</b>	<b>27</b>	<b>100%</b>



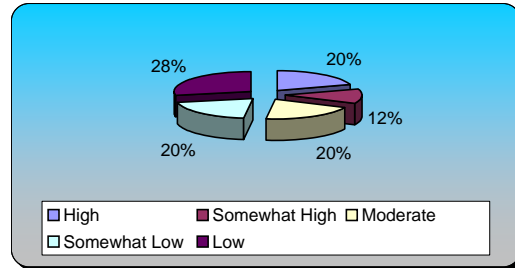
**120.) School Crossing Guards (multiple choice) Responses**

Increased	1	3.33%
Maintained	10	33.33%
Reduced	5	16.67%
Eliminated	13	43.33%
Unsure / No response	1	3.33%
<b>Totals</b>	<b>30</b>	<b>100%</b>



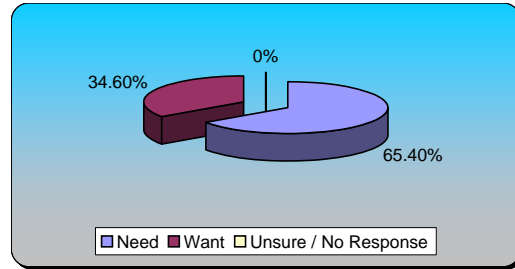
**121.) School Crossing Guards (multiple choice) Responses**

High	5	20%
Somewhat High	3	12%
Moderate	5	20%
Somewhat Low	5	20%
Low	7	28%
<b>Totals</b>	<b>25</b>	<b>100%</b>



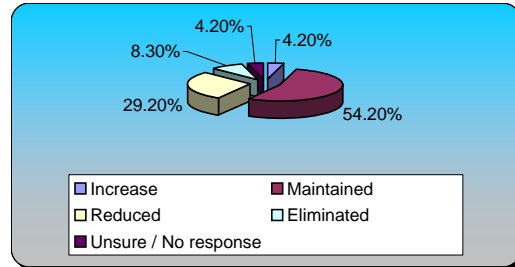
**122.) Internal Government Support (multiple choice) Responses**

Need	17	65.38%
Want	9	34.62%
Unsure / No Response	0	0%
<b>Totals</b>	<b>26</b>	<b>100%</b>



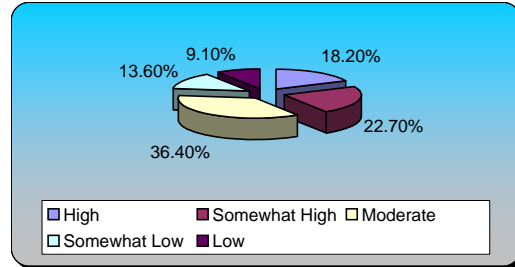
**123.) Internal Government Support (multiple choice) Responses**

Increase	1	4.17%
Maintained	13	54.17%
Reduced	7	29.17%
Eliminated	2	8.33%
Unsure / No response	1	4.17%
<b>Totals</b>	<b>24</b>	<b>100%</b>



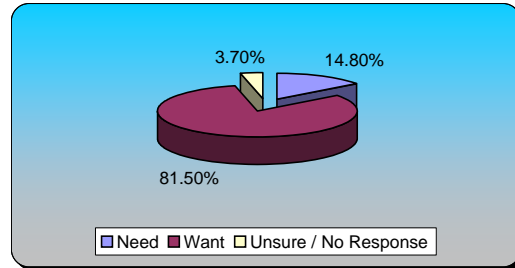
**124.) Internal Government Support (multiple choice) Responses**

High	4	18.18%
Somewhat High	5	22.73%
Moderate	8	36.36%
Somewhat Low	3	13.64%
Low	2	9.09%
<b>Totals</b>	<b>22</b>	<b>100%</b>



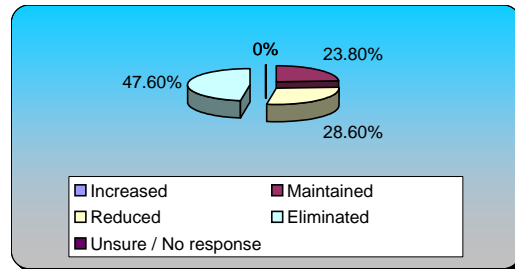
**125.) Cable Broadcast Programming (multiple choice)**

	Responses	
Need	4	14.81%
Want	22	81.48%
Unsure / No Response	1	3.70%
<b>Totals</b>	<b>27</b>	<b>100%</b>



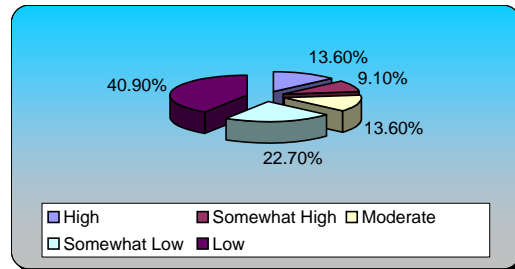
**126.) Cable Broadcast Programming (multiple choice)**

	Responses	
Increased	0	0%
Maintained	5	23.81%
Reduced	6	28.57%
Eliminated	10	47.62%
Unsure / No response	0	0%
<b>Totals</b>	<b>21</b>	<b>100%</b>



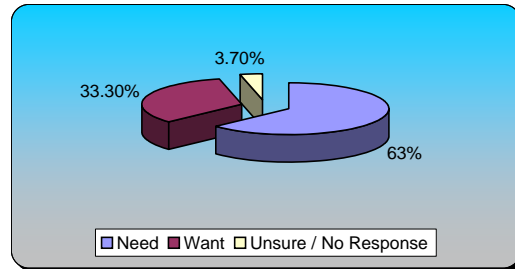
**127.) Cable Broadcast Programming (multiple choice)**

	Responses	
High	3	13.64%
Somewhat High	2	9.09%
Moderate	3	13.64%
Somewhat Low	5	22.73%
Low	9	40.91%
<b>Totals</b>	<b>22</b>	<b>100%</b>



**128.) Communicating with the Public & Media (multiple choice)**

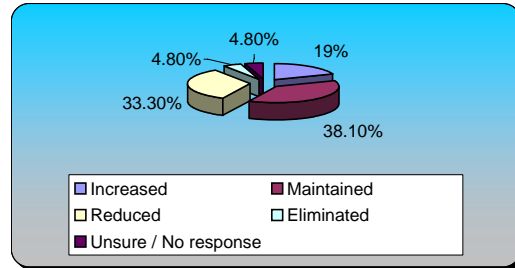
	Responses	
Need	17	62.96%
Want	9	33.33%
Unsure / No Response	1	3.70%
<b>Totals</b>	<b>27</b>	<b>100%</b>





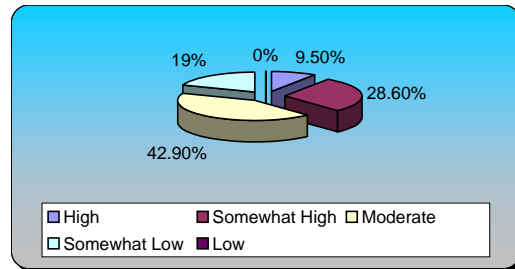
**129.) Communicating with the Public & Media (multiple choice)**

	Responses	
Increased	4	19.05%
Maintained	8	38.10%
Reduced	7	33.33%
Eliminated	1	4.76%
Unsure / No response	1	4.76%
<b>Totals</b>	<b>21</b>	<b>100%</b>



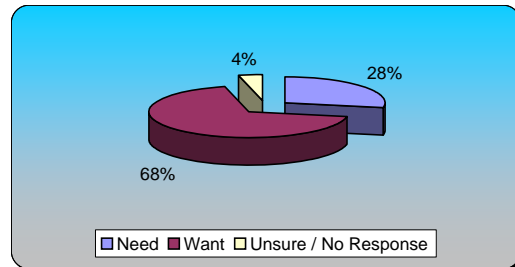
**130.) Communicating with the Public & Media (multiple choice)**

	Responses	
High	2	9.52%
Somewhat High	6	28.57%
Moderate	9	42.86%
Somewhat Low	4	19.05%
Low	0	0%
<b>Totals</b>	<b>21</b>	<b>100%</b>



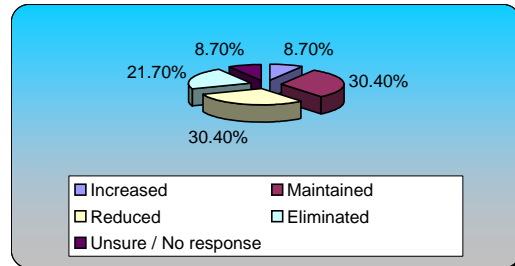
**131.) 311 Customer Call Center (multiple choice)**

	Responses	
Need	7	28%
Want	17	68%
Unsure / No Response	1	4%
<b>Totals</b>	<b>25</b>	<b>100%</b>



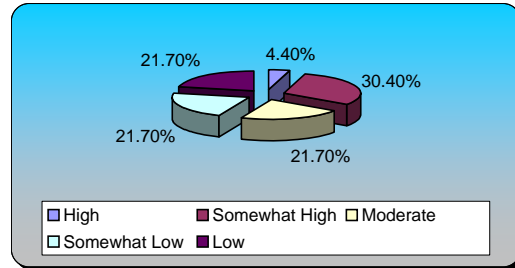
**132.) 311 Customer Call Center (multiple choice)**

	Responses	
Increased	2	8.70%
Maintained	7	30.43%
Reduced	7	30.43%
Eliminated	5	21.74%
Unsure / No response	2	8.70%
<b>Totals</b>	<b>23</b>	<b>100%</b>



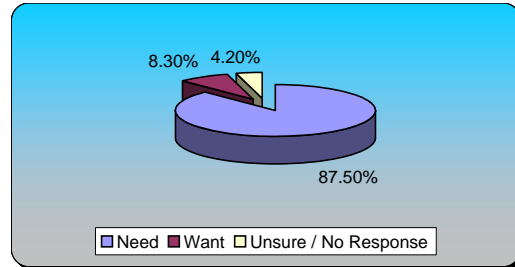
**133.) 311 Customer Call Center (multiple choice) Responses**

High	1	4.35%
Somewhat High	7	30.43%
Moderate	5	21.74%
Somewhat Low	5	21.74%
Low	5	21.74%
<b>Totals</b>	<b>23</b>	<b>100%</b>



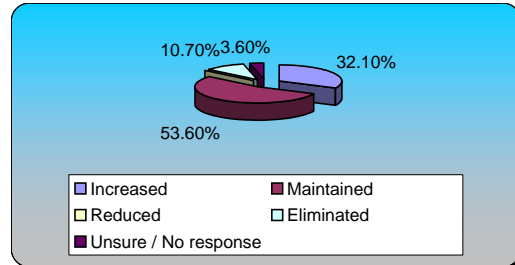
**134.) Coalition for Youth Services (multiple choice) Responses**

Need	21	87.50%
Want	2	8.33%
Unsure / No Response	1	4.17%
<b>Totals</b>	<b>24</b>	<b>100%</b>



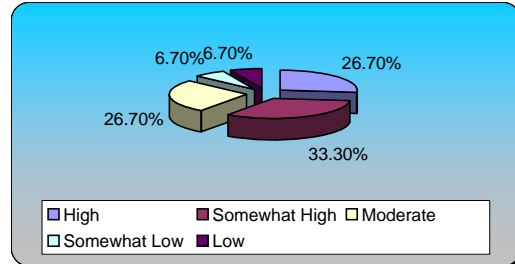
**135.) Coalition for Youth Services (multiple choice) Responses**

Increased	9	32.14%
Maintained	15	53.57%
Reduced	0	0%
Eliminated	3	10.71%
Unsure / No response	1	3.57%
<b>Totals</b>	<b>28</b>	<b>100%</b>

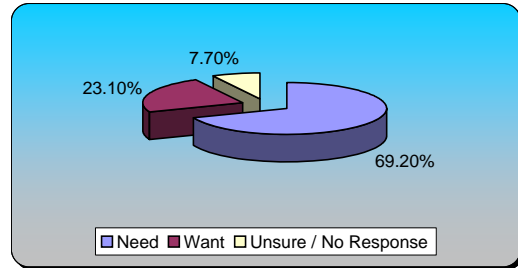


**136.) Coalition for Youth Services (multiple choice) Responses**

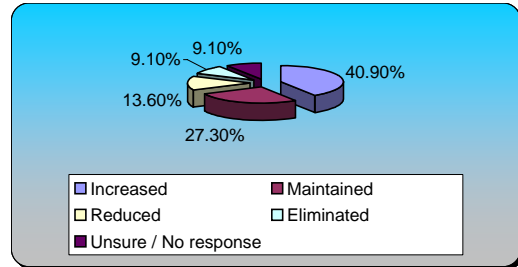
High	4	26.67%
Somewhat High	5	33.33%
Moderate	4	26.67%
Somewhat Low	1	6.67%
Low	1	6.67%
<b>Totals</b>	<b>15</b>	<b>100%</b>



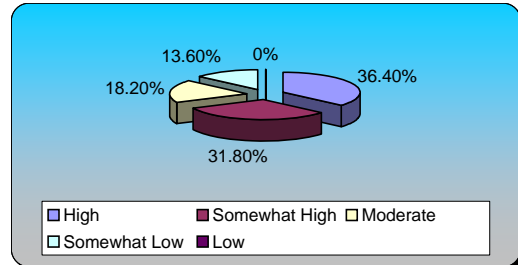
<u>137.) Healthy Start Program (multiple choice)</u>	<u>Responses</u>	
Need	18	69.23%
Want	6	23.08%
Unsure / No Response	2	7.69%
<b>Totals</b>	<b>26</b>	<b>100%</b>



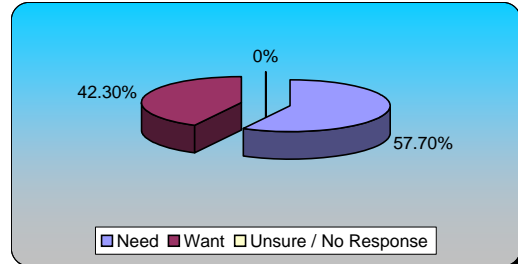
<u>138.) Healthy Start Program (multiple choice)</u>	<u>Responses</u>	
Increased	9	40.91%
Maintained	6	27.27%
Reduced	3	13.64%
Eliminated	2	9.09%
Unsure / No response	2	9.09%
<b>Totals</b>	<b>22</b>	<b>100%</b>



<u>139.) Healthy Start Program (multiple choice)</u>	<u>Responses</u>	
High	8	36.36%
Somewhat High	7	31.82%
Moderate	4	18.18%
Somewhat Low	3	13.64%
Low	0	0%
<b>Totals</b>	<b>22</b>	<b>100%</b>

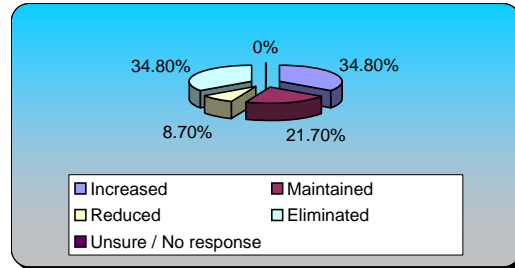


<u>140.) Parenting Programs (multiple choice)</u>	<u>Responses</u>	
Need	15	57.69%
Want	11	42.31%
Unsure / No Response	0	0%
<b>Totals</b>	<b>26</b>	<b>100%</b>



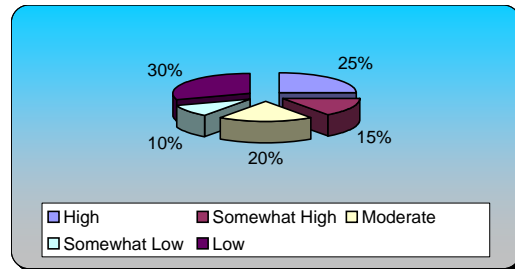
**141.) Parenting Programs (multiple choice) Responses**

Increased	8	34.78%
Maintained	5	21.74%
Reduced	2	8.70%
Eliminated	8	34.78%
Unsure / No response	0	0%
<b>Totals</b>	<b>23</b>	<b>100%</b>



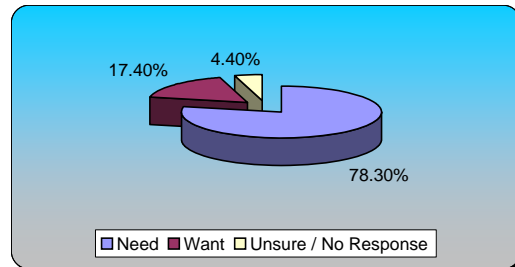
**142.) Parenting Programs (multiple choice) Responses**

High	5	25%
Somewhat High	3	15%
Moderate	4	20%
Somewhat Low	2	10%
Low	6	30%
<b>Totals</b>	<b>20</b>	<b>100%</b>



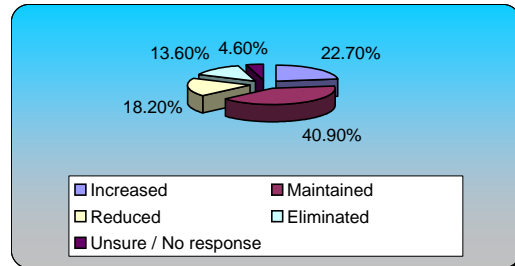
**143.) Social Services Programs (multiple choice) Responses**

Need	18	78.26%
Want	4	17.39%
Unsure / No Response	1	4.35%
<b>Totals</b>	<b>23</b>	<b>100%</b>



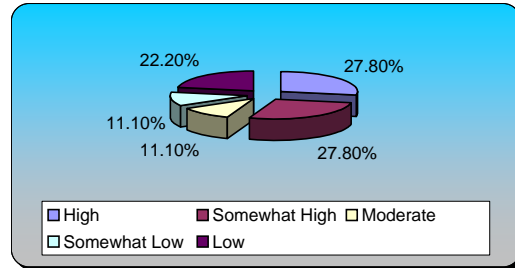
**144.) Social Services Programs (multiple choice) Responses**

Increased	5	22.73%
Maintained	9	40.91%
Reduced	4	18.18%
Eliminated	3	13.64%
Unsure / No response	1	4.55%
<b>Totals</b>	<b>22</b>	<b>100%</b>



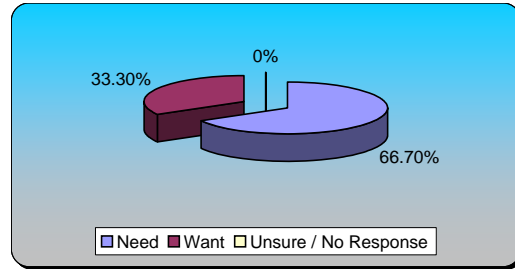
**145.) Social Services Programs (multiple choice) Responses**

High	5	27.78%
Somewhat High	5	27.78%
Moderate	2	11.11%
Somewhat Low	2	11.11%
Low	4	22.22%
<b>Totals</b>	<b>18</b>	<b>100%</b>



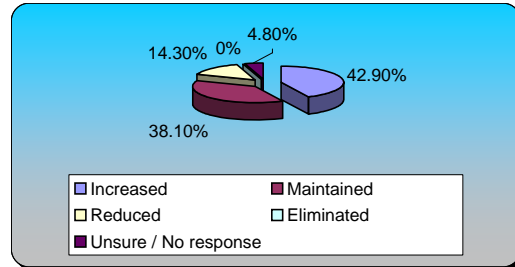
**146.) Health Department Programs (multiple choice) Responses**

Need	16	66.67%
Want	8	33.33%
Unsure / No Response	0	0%
<b>Totals</b>	<b>24</b>	<b>100%</b>



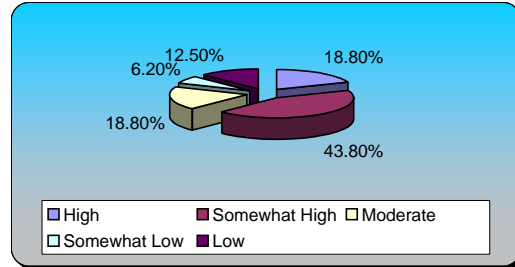
**147.) Health Department Programs (multiple choice) Responses**

Increased	9	42.86%
Maintained	8	38.10%
Reduced	3	14.29%
Eliminated	0	0%
Unsure / No response	1	4.76%
<b>Totals</b>	<b>21</b>	<b>100%</b>

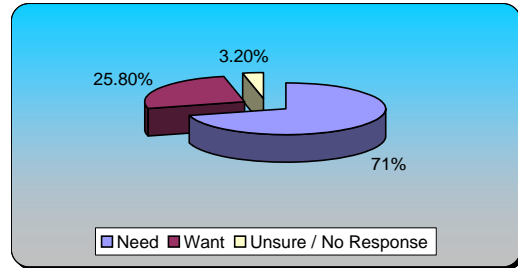


**148.) Health Department Programs (multiple choice) Responses**

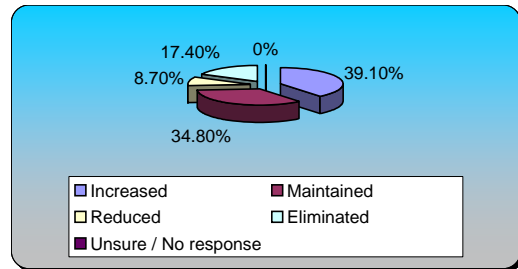
High	3	18.75%
Somewhat High	7	43.75%
Moderate	3	18.75%
Somewhat Low	1	6.25%
Low	2	12.50%
<b>Totals</b>	<b>16</b>	<b>100%</b>



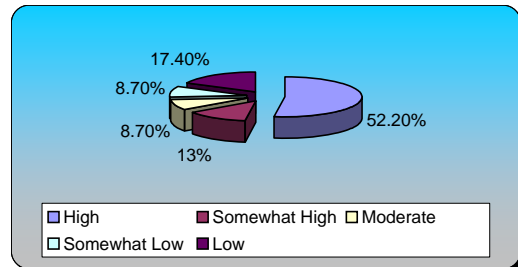
<b>149.) Teen Center Operations (multiple choice)</b>	<b>Responses</b>	
Need	22	70.97%
Want	8	25.81%
Unsure / No Response	1	3.23%
<b>Totals</b>	<b>31</b>	<b>100%</b>



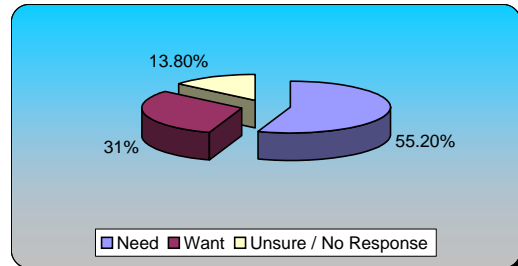
<b>150.) Teen Center Operations (multiple choice)</b>	<b>Responses</b>	
Increased	9	39.13%
Maintained	8	34.78%
Reduced	2	8.70%
Eliminated	4	17.39%
Unsure / No response	0	0%
<b>Totals</b>	<b>23</b>	<b>100%</b>



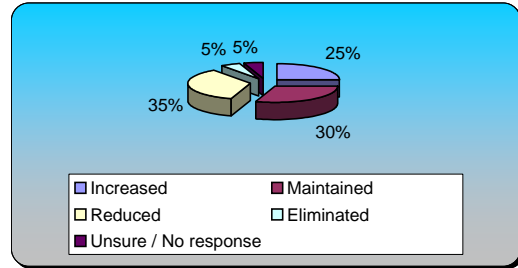
<b>151.) Teen Center Operations (multiple choice)</b>	<b>Responses</b>	
High	12	52.17%
Somewhat High	3	13.04%
Moderate	2	8.70%
Somewhat Low	2	8.70%
Low	4	17.39%
<b>Totals</b>	<b>23</b>	<b>100%</b>



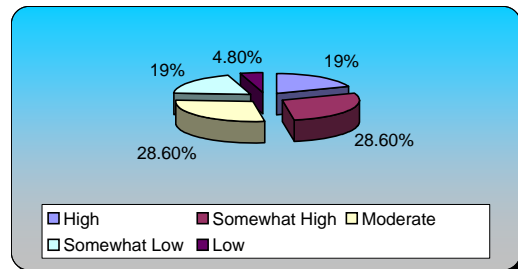
<b>152.) Outside Agency Funding (multiple choice)</b>	<b>Responses</b>	
Need	16	55.17%
Want	9	31.03%
Unsure / No Response	4	13.79%
<b>Totals</b>	<b>29</b>	<b>100%</b>



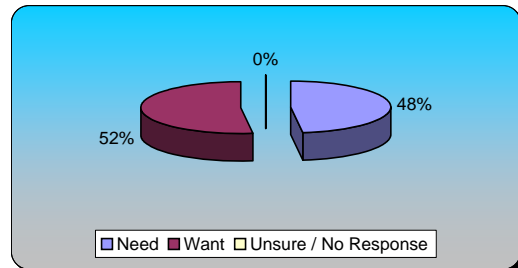
<b>153.) Outside Agency Funding (multiple choice)</b>	<b>Responses</b>	
Increased	5	25%
Maintained	6	30%
Reduced	7	35%
Eliminated	1	5%
Unsure / No response	1	5%
<b>Totals</b>	<b>20</b>	<b>100%</b>



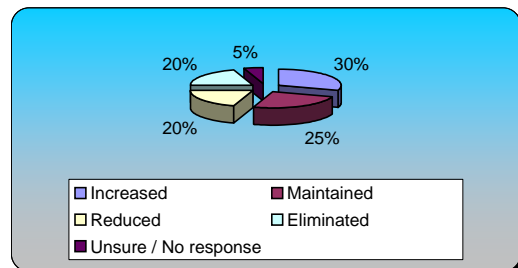
<b>154.) Outside Agency Funding (multiple choice)</b>	<b>Responses</b>	
High	4	19.05%
Somewhat High	6	28.57%
Moderate	6	28.57%
Somewhat Low	4	19.05%
Low	1	4.76%
<b>Totals</b>	<b>21</b>	<b>100%</b>



<b>155.) Arts Commission/American Theater (multiple choice)</b>	<b>Responses</b>	
Need	12	48%
Want	13	52%
Unsure / No Response	0	0%
<b>Totals</b>	<b>25</b>	<b>100%</b>

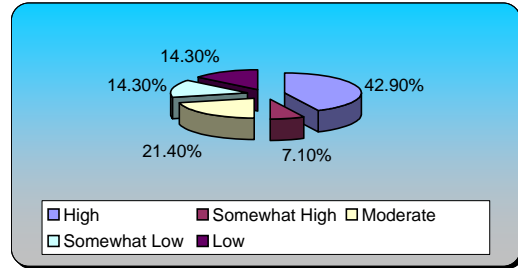


<b>156.) Arts Commission/American Theater (multiple choice)</b>	<b>Responses</b>	
Increased	6	30%
Maintained	5	25%
Reduced	4	20%
Eliminated	4	20%
Unsure / No response	1	5%
<b>Totals</b>	<b>20</b>	<b>100%</b>



**157.) Arts Commission/American Theater (multiple choice)**

	<b>Responses</b>	
High	6	42.86%
Somewhat High	1	7.14%
Moderate	3	21.43%
Somewhat Low	2	14.29%
Low	2	14.29%
<b>Totals</b>	<b>14</b>	<b>100%</b>



**158.) Potential Revenue Options (multiple choice)**

	<b>Responses</b>	
Real Estate Tax Rate (To offset decreased ass...	5	7.04%
Personal Property Rate (includes Boat Tax and...	8	11.27%
Amusement / Admissions Tax	8	11.27%
Cigarette Tax	24	33.80%
Restaurant Meals Tax	8	11.27%
User Fees for Services (Golf Course, Recreati...	10	14.08%
No Increases in Fees or Taxes	5	7.04%
Unsure / No response	3	4.23%
<b>Totals</b>	<b>71</b>	<b>100%</b>

