

# FACT SHEET – PROPOSED LIMITED RAMP CLOSURES TO RELIEVE TRAFFIC

City of Hampton and Virginia Department of Transportation

## PROBLEM:

Daily traffic jams clog downtown and Phoebus streets daily, keeping residents from homes and businesses.

## CAUSE:

Interstate drivers try to go around bridge-tunnel backups by cutting through city streets to re-enter I-64 closer to the bridge-tunnel

## OBJECTIVE:

Keep I-64 through-traffic on the interstate

## PROPOSED STRATEGY:

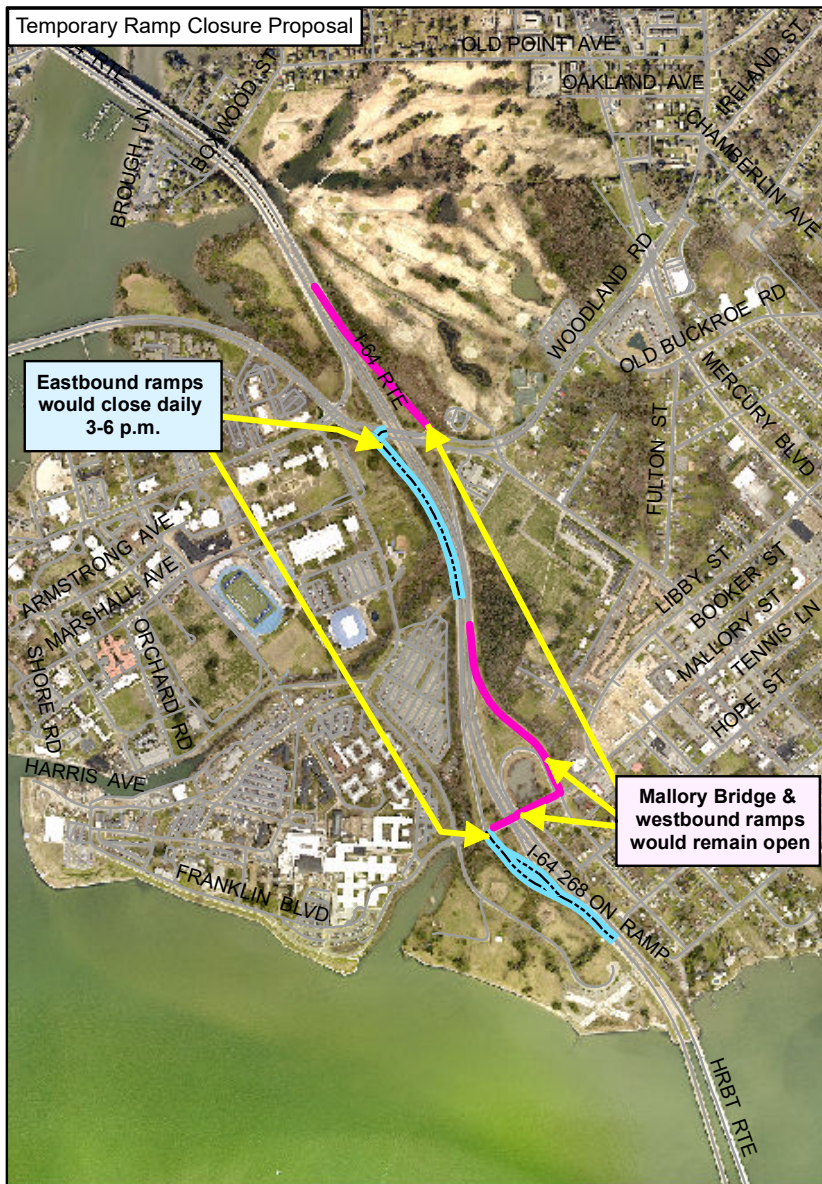
Temporarily close the two ramps closest to the Hampton Roads Bridge-Tunnel during peak traffic, patterned after successful measure in Norfolk's Ocean View/Willoughby area.

## HOW:

Close the ramps for I-64 East at Settlers Landing Road and Mallory Street from **3-6 p.m. daily**.

Would **not** affect:

- Drivers exiting I-64 at Settlers Landing and Mallory
- Westbound drivers getting onto I-64
- Mallory Street bridge overpass between the VA Hospital and Phoebus
- Eastbound ramps at before 3 p.m. and after 6 p.m.
- Emergency vehicles



## FAQ:

### ***How will I get to I-64 eastbound from downtown or Phoebus?***

Drive west to LaSalle Avenue or Mercury Boulevard on-ramps; take I-664; or leave after 6 p.m., when ramps reopen.

### ***When would this start?***

Potentially October with law enforcement personnel and January with automatic gates; requires federal approval

### ***How long would this last?***

Until the expansion of the bridge-tunnel/express lanes project is complete at the end of 2025

### ***How will drivers know?***

Signs on the interstate and near the ramps will indicate when the ramps are closed. Major navigation app owners will be notified, and a robust communications campaign will move forward once approved.